

LOC/DME I-FFT 109.95	APP CRS 249°	Rwy Idg TDZE 790 Apt Elev 812
Chan 36 (Y)		

LOC RWY 25

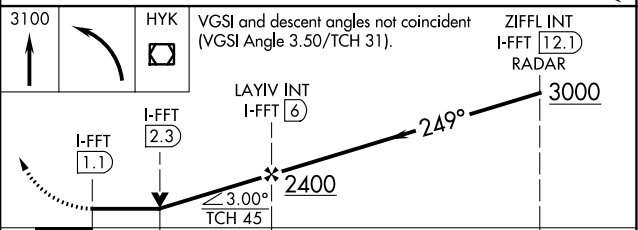
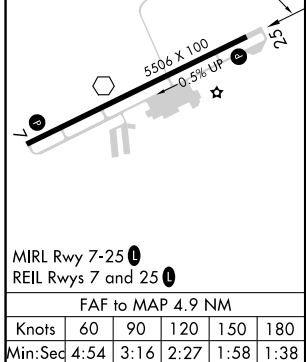
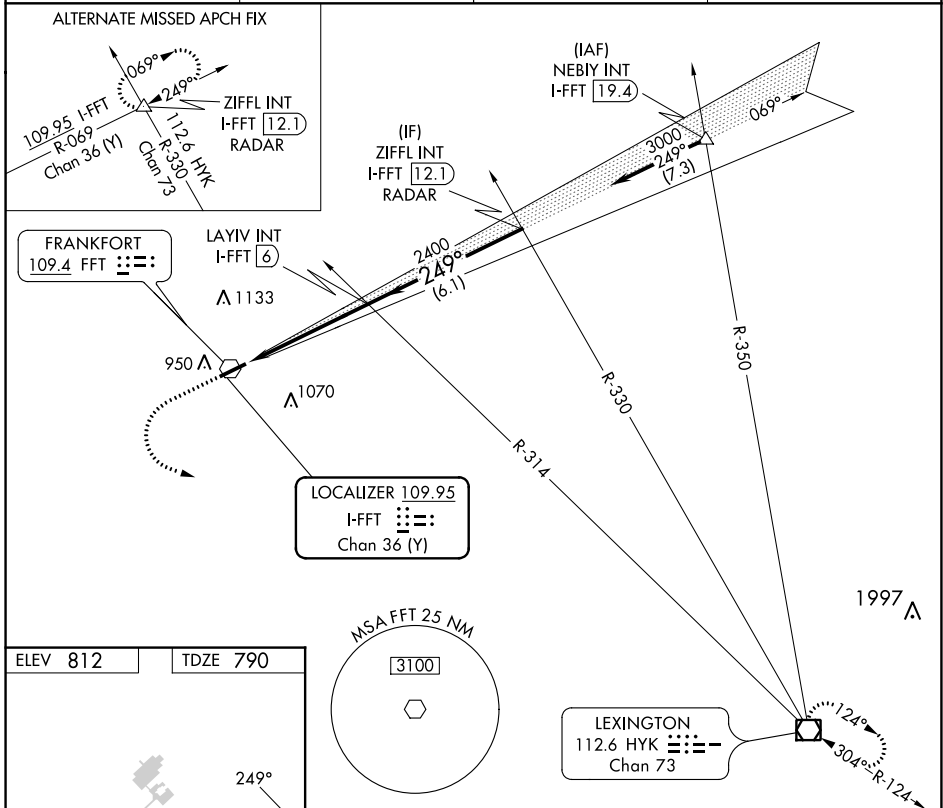
CAPITAL CITY (F'F'T)

▼ Rwy 25 helicopter visibility reduction below 3/4 SM NA. When local altimeter setting not received, use Lexington altimeter setting and increase all MDA 80 feet. Increase S-25 Cats C/D visibility to 1 1/2 mile and Circling Cat C and D visibility 1/4 mile.

▲ NA

MISSED APPROACH: Climb to 3100 then left turn direct HYK VOR/DME and hold.

ASOS 119.275	LEXINGTON APP CON 120.75 298.9	CLNC DEL 118.65	UNICOM 122.8 (CTAF) 0
------------------------	--	---------------------------	---------------------------------



CATEGORY	A	B	C	D
S-25	1280-1	490 (500-1)	1280-1 3/8	490 (500-1 3/8)
C CIRCLING	1280-1 468 (500-1)	1380-1 568 (600-1)	1440-1 3/4 628 (700-1 3/4)	1440-2 628 (700-2)

SE-1, 05 SEP 2024 to 03 OCT 2024

SE-1, 05 SEP 2024 to 03 OCT 2024