

VOR FFT 109.4	APP CRS 251°	Rwy Idg TDZE Apt Elev	5506 790 812
-------------------------	------------------------	-----------------------------	---

VOR RWY 25
CAPITAL CITY (F'F'T)

▽ Rwy 25 helicopter visibility reduction below 3/4 SM NA. When local altimeter setting not received, use Lexington altimeter setting and increase all MDA 80 feet, increase S-25 Cat C/D visibility 1/2 mile, and increase Circling Cat C 1/2 mile, and Cat D 1/4 mile.

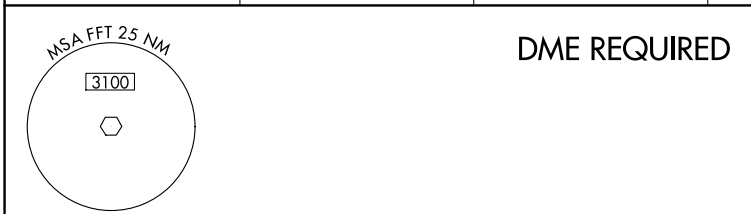
MISSED APPROACH:
Climb to 3100 then left turn direct HYK VOR/DME and hold.

ASOS
119.275

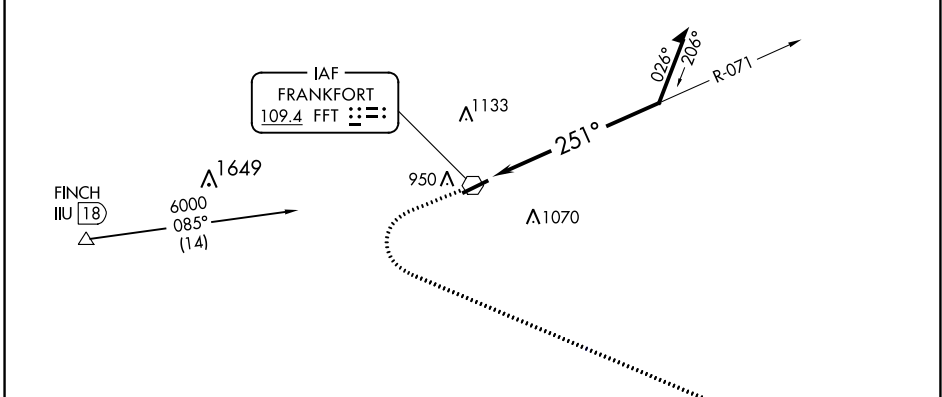
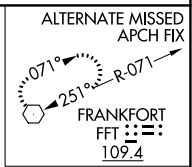
LEXINGTON APP CON
120.75 298.9

CLNC DEL
118.65

UNICOM
122.8 (CTAF) 0



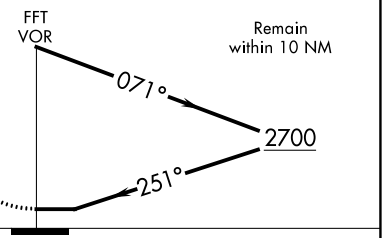
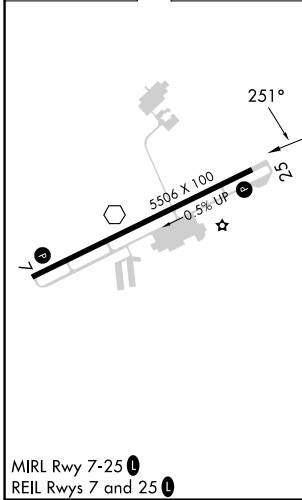
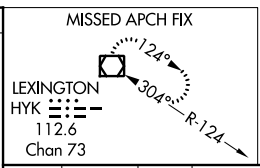
DME REQUIRED



SE-1, 05 SEP 2024 to 03 OCT 2024

SE-1, 05 SEP 2024 to 03 OCT 2024

ELEV 812 TDZE 790



CATEGORY	A	B	C	D
S-25	1440-1	650 (700-1)	1440-1 7/8	650 (700-1 7/8)
C CIRCLING	1440-1	628 (700-1)	1440-1 7/8	1440-2 628 (700-2)

MIRL Rwy 7-25 0
REIL Rws 7 and 25 0