

LOC/DME I-CGF 111.1 Chan 48	APP CRS 237°	Rwy Idg TDZE Apt Elev	5000 873 876
--	------------------------	-----------------------------	---

ILS or LOC RWY 24

CUYAHOGA COUNTY (CGF)

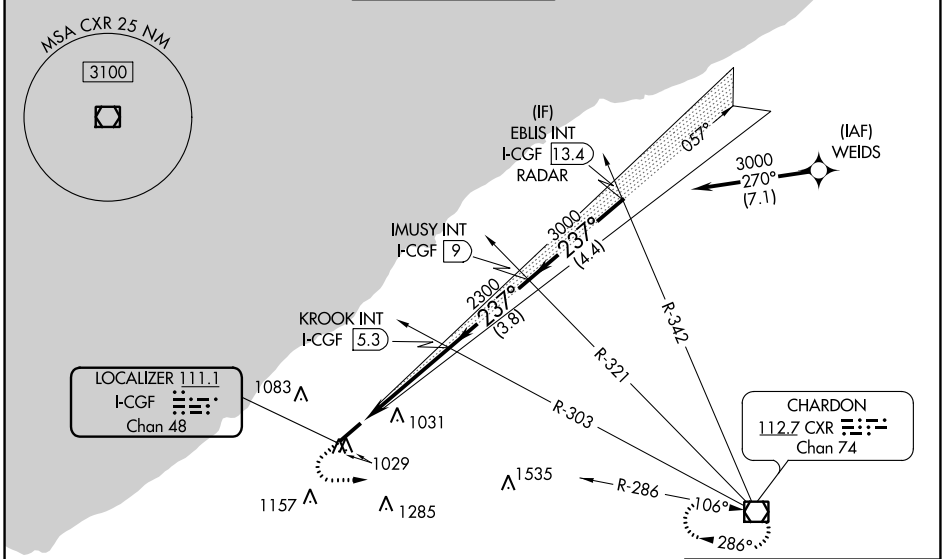
RNP APCH-GPS. From WEIDS.
RNAV 1-GPS or RADAR required for procedure entry.
Aircraft not GPS equipped - RADAR required for procedure entry.

MALS

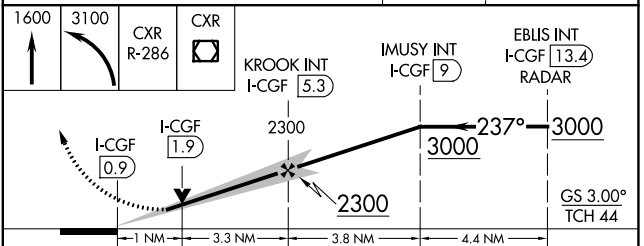
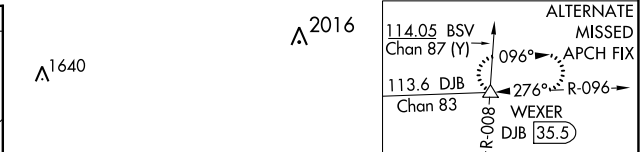
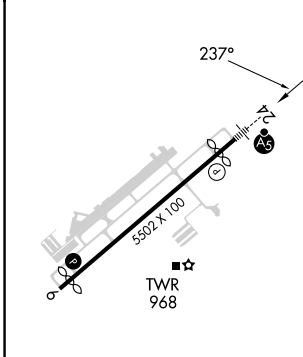
MISSED APPROACH: Climb to 1600 then climbing left turn to 3100 on CXR VOR/DME R-286 to CXR VOR/DME and hold.

Autopilot coupled approach N/A below 1513.
Rwy 24 helicopter visibility reduction below 3/4 SM NA.
For inop ALS increase S-LOC Cats C/D to 1 SM.

D-ATIS 119.95	CLEVELAND APP CON 125.35 346.325	COUNTY TOWER* 118.5 (CTAF)	GND CON 121.85	CINC DEL 121.85 (when tower closed)
-------------------------	--	---	--------------------------	--



ELEV 876	D	TDZE 873
----------	----------	----------



CATEGORY	A	B	C	D
S-ILS 24	1073-1/2		200 (200-1/2)	
S-LOC 24	1240-1/2	367 (400-1/2)	1240-5/8	367 (400-5/8)
CIRCLING	1400-1 524 (600-1)	1500-1 624 (700-1)	1560-2 684 (700-2)	1620-2 1/2 744 (800-2 1/2)

CLEVELAND, OHIO
Amdt 16C 27JAN22

41°34'N-81°29'W

CUYAHOGA COUNTY (CGF) ILS or LOC RWY 24

EC-2, 05 SEP 2024 to 03 OCT 2024

EC-2, 05 SEP 2024 to 03 OCT 2024