

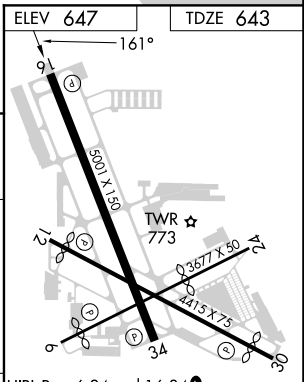
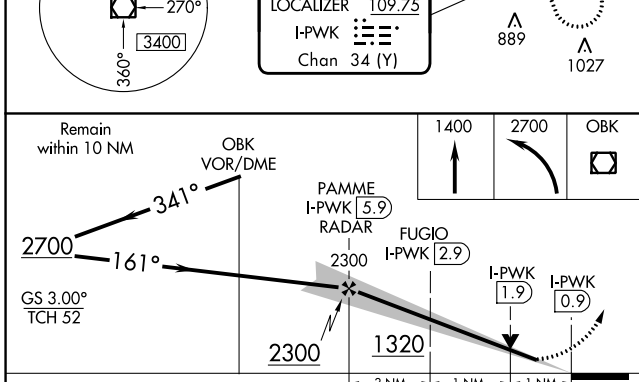
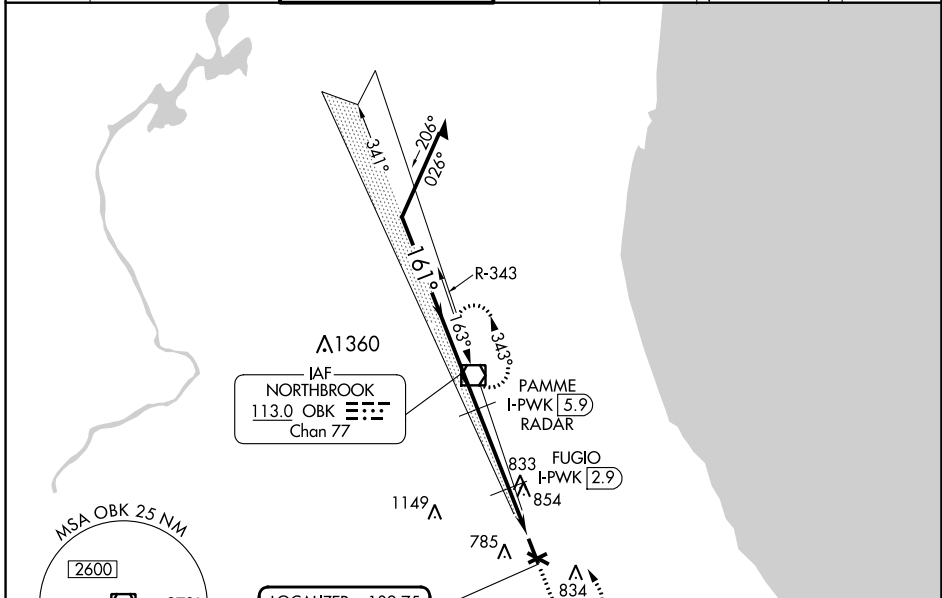
LOC/DME I-PWK 109.75 Chan 34 (Y)	APP CRS 161°	Rwy Idg 5001 TDZE 643 Apt Elev 647
--	------------------------	--

ILS or LOC RWY 16

CHICAGO EXEC (PWK)

DME required.		MISSED APPROACH: Climb to 1400 then climbing left turn to 2700 direct OBK VOR/DME and hold, continue climb-in-hold to 2700.				
<p>⚠ Circling Rwy 6, 12, 24, 30 NA at night. Rwy 16 helicopter visibility reduction below 3/4 SM NA.</p>						

ATIS 124.2	CHICAGO APP CON 120.55 306.925	EXECUTIVE TOWER ★ 119.9 (CTAF) 0	GND CON 121.7	CLNC DEL 124.7	CLNC DEL 124.7 (When twr closed)	UNICOM 122.95
----------------------	--	---	-------------------------	--------------------------	---	-------------------------



CATEGORY	A	B	C	D	
S-ILS 16		927-7/8	284 (300-7/8)		
S-LOC 16		1020-1	377 (400-1)		
CIRCLING	1140-1	1160-1	1200-1½	1460-2¾	
	493 (500-1)	513 (600-1)	553 (600-2)	813 (900-2¾)	
FAF to MAP 5 NM					
Knots	60	90	120	150	180
Min:Sec	5:00	3:20	2:30	2:00	1:40

EC-3, 05 SEP 2024 to 03 OCT 2024

EC-3, 05 SEP 2024 to 03 OCT 2024