

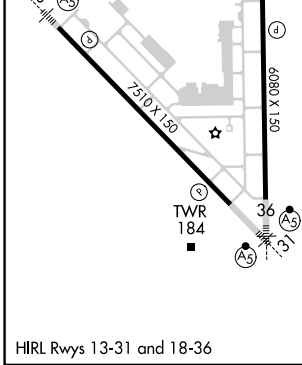
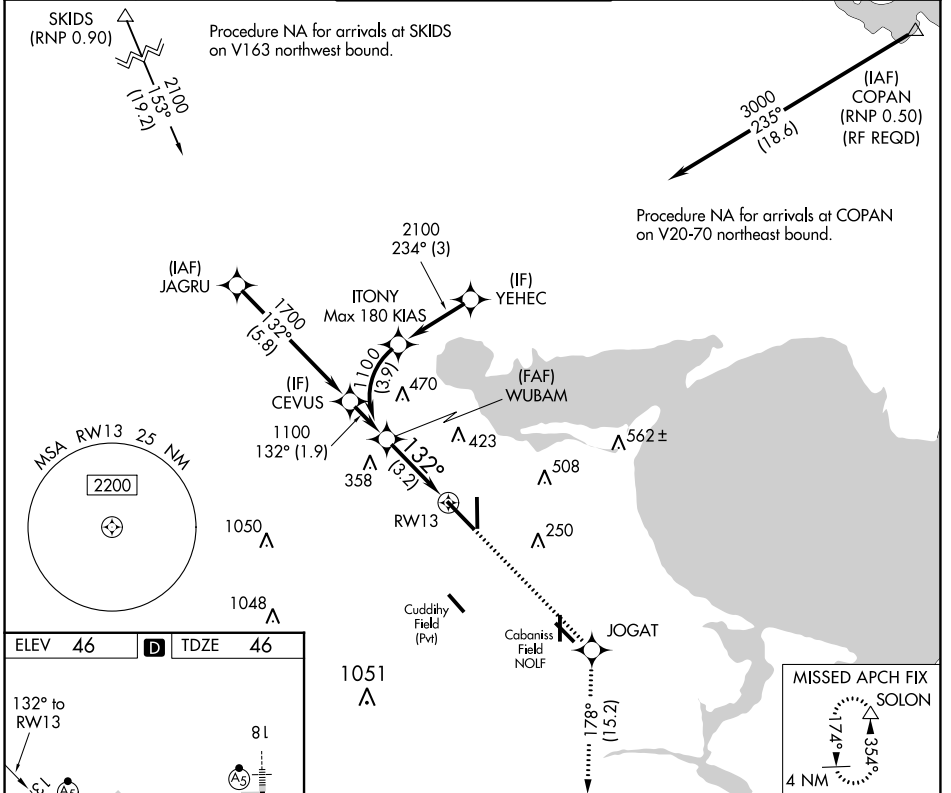
APP CRS 132°	Rwy Idg TDZE Apt Elev	7510 46 46
------------------------	-----------------------------	---------------------------------------

RNAV (RNP) Z RWY 13

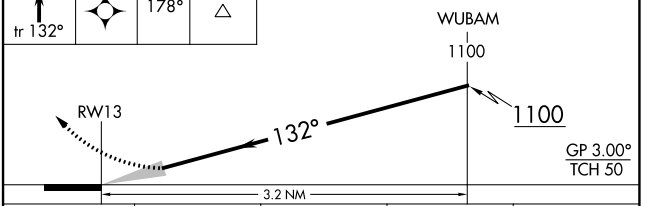
CORPUS CHRISTI INTL (CRP)

For uncompensated Baro-VNAV systems, procedure NA below -1°C (31°F) or above 54°C (130°F). GPS required.	MALSR 	MISSED APPROACH: Climb to 2000 on track 132° to JOGAT and on track 178° to SOLON and hold.

ATIS 126.8	CORPUS APP CON 120.9 348.725	CORPUS TOWER 119.4 257.8	GND CON 121.9 269.15	CLNC DEL 118.55
----------------------	--	------------------------------------	--------------------------------	---------------------------



2000 tr 132°	JOGAT tr 178°	SOLON △	See planview for multiple IF locations.
-----------------	------------------	------------	---



CATEGORY	A	B	C	D
RNP 0.30 DA	394/30		348 (400-%)	

AUTHORIZATION REQUIRED

SC-3, 05 SEP 2024 to 03 OCT 2024

SC-3, 05 SEP 2024 to 03 OCT 2024