

WAAS CH 97631 W34A	APP CRS 337°	Rwy Idg TDZE Apt Elev	5001 102 107
--	------------------------	-----------------------------	---

RNAV (GPS) RWY 34

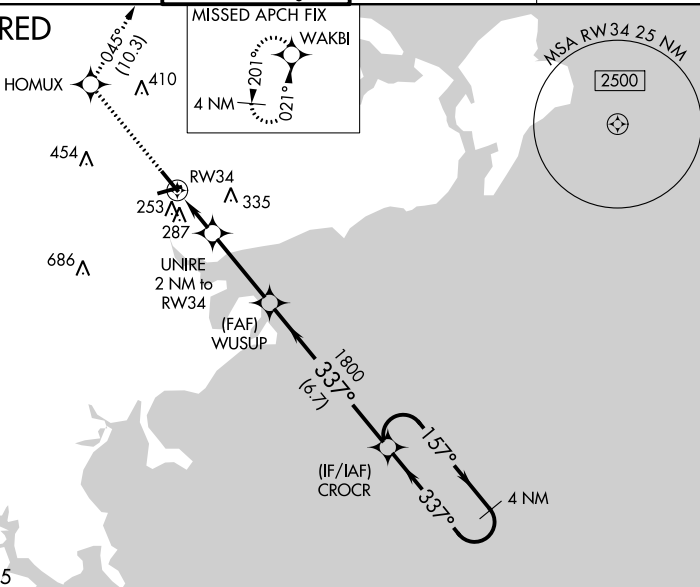
BEVERLY RGNL (BVY)

⚠ For uncompensated Baro-VNAV systems, LNAV/VNAV NA below -18°C (0°F) or above 54°C (130°F). Baro-VNAV and VDP NA when using Lawrence altimeter setting. DME/DME RNP-0.3 NA. When local altimeter setting not received, use Lawrence altimeter setting: increase LPV DA to 416 and LNAV/VNAV DA to 502 and all MDA 40 feet; increase LPV all Cats visibility and LNAV/VNAV all Cats visibility and LNAV Cats C and D visibility 1/8 SM and Circling Cats C and D visibility 1/4 SM. Circling Rwy 9 NA at night. Rwy 34 helicopter visibility reduction below 3/4 SM NA. Rwy 9 helicopter visibility reduction below 1 SM NA.

MISSED APPROACH:
Climb to 2000 direct HOMUX and on track 045° to WAKBI and hold.

ATIS 119.2	BOSTON APP CON 124.4 279.6	BEVERLY TOWER ★ 125.2 (CTAF) 0	GND CON 121.6	UNICOM 122.95
----------------------	--------------------------------------	---	-------------------------	-------------------------

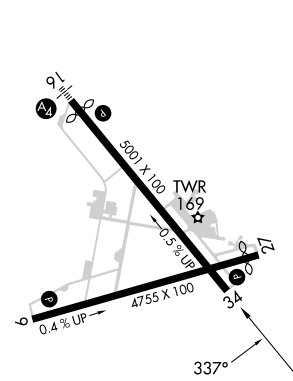
RADAR REQUIRED



NE-1, 05 SEP 2024 to 03 OCT 2024

NE-1, 05 SEP 2024 to 03 OCT 2024

ELEV 107	TDZE 102
----------	----------



REIL Rwy 34 **0**
MIRL Rwy 9-27 and 16-34 **0**

2000	HOMUX	tr 045°	WAKBI	4 NM Holding Pattern
*LNAV only.				
	RW34	UNIRE 2 NM to RW34	WUSUP 1800	CROCR
	1.3 NM	0.7 NM	3.2 NM	6.7 NM
		*760	1800	157° → 2000
				← 337°
				GP 3.00° TCH 54
CATEGORY	A	B	C	D
LPV DA	382-1 280 (300-1)			
LNAV/VNAV DA	468-1 1/4 366 (400-1 1/4)			
LNAV MDA	540-1	438 (500-1)	540-1 1/4	438 (500-1 1/4)
C CIRCLING	600-1	493 (500-1)	820-2 713 (800-2)	880-2 1/2 773 (800-2 1/2)