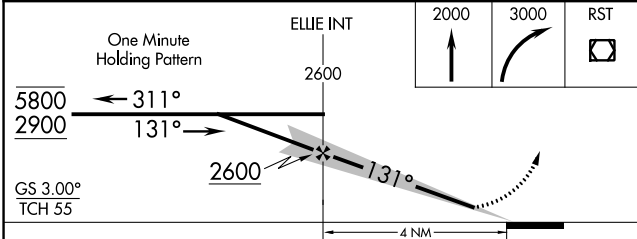
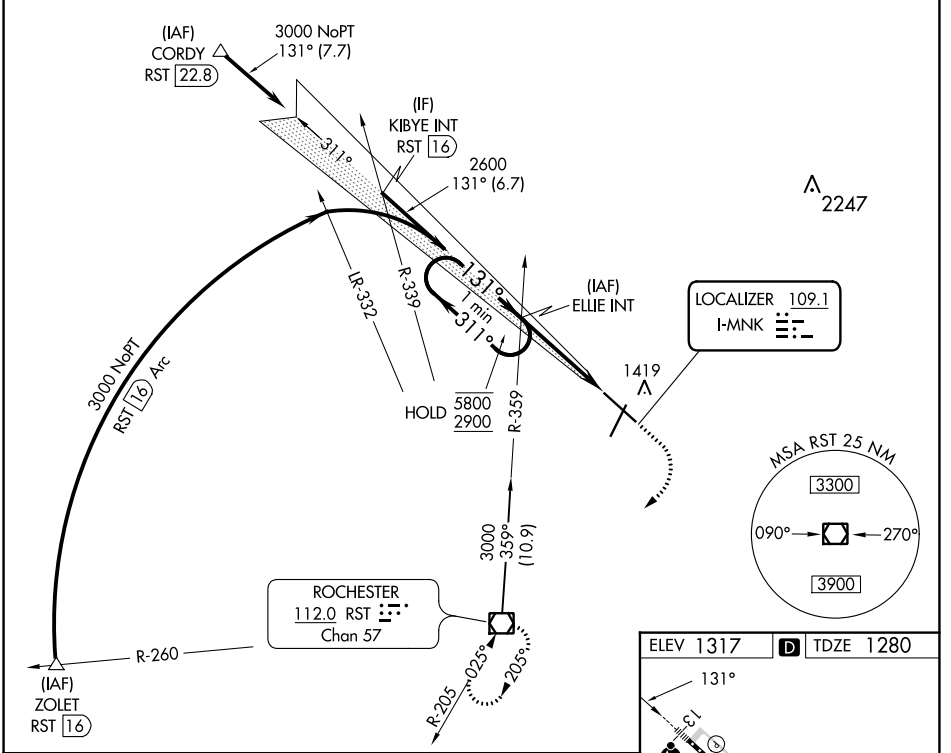


LOC I-MNKG <b>109.1</b>	APP CRS <b>131°</b>	Rwy ldg TDZE Apt Elev	<b>9033</b> <b>1280</b> <b>1317</b>
----------------------------	------------------------	-----------------------------	---

# ILS or LOC RWY 13

ROCHESTER INTL (RST)

  MALS R	MISSED APPROACH: Climb to 2000 then climbing right turn to 3000 direct RST VOR/DME and hold.			
	ATIS <b>120.5</b>	ROCHESTER APP CON* <b>119.8 251.125</b>	ROCHESTER TOWER* <b>118.3(CTAF) 257.8</b>	GND CON <b>121.9</b>



ELEV 1317	D	TDZE 1280
-----------	---	-----------

TDZ/CL Rwy 13 and 31	HIRL Rwy 13-31	MIRL Rwy 3-21	REIL Rwy 3 and 21
----------------------	----------------	---------------	-------------------

FAF to MAP 4 NM					
Knots	60	90	120	150	180
Min:Sec	4:00	2:40	2:00	1:36	1:20

CATEGORY	A	B	C	D
S-ILS 13	1480/18 200 (200-½)			
S-LOC 13	1680/24	400 (400-½)	1680/35	400 (400-¾)
CIRCLING	1720-1 403 (500-1)	1780-1 463 (500-1)	1900-1½ 583 (600-1½)	1900-2 583 (600-2)

NC-1, 05 SEP 2024 to 03 OCT 2024

NC-1, 05 SEP 2024 to 03 OCT 2024