

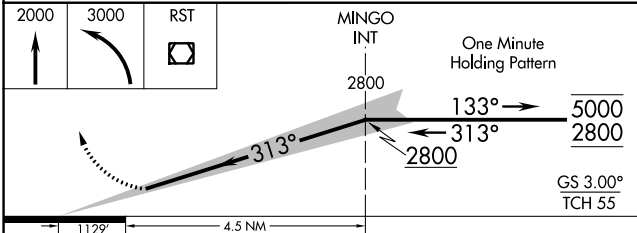
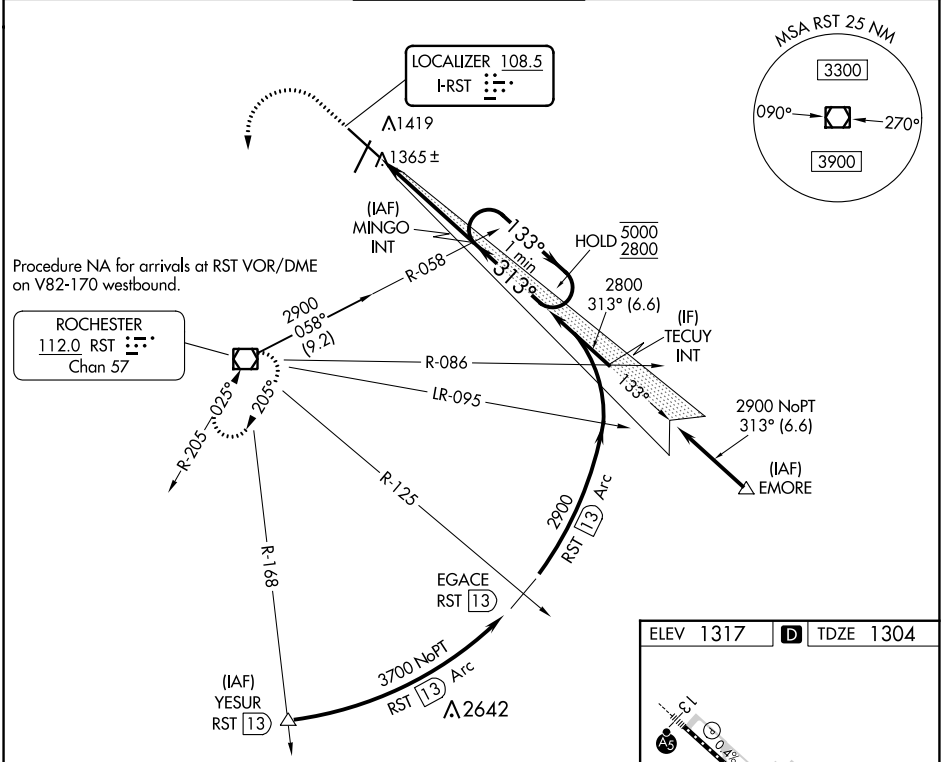
LOC I-RST <b>108.5</b>	APP CRS <b>313°</b>	Rwy Idg <b>9033</b> TDZE <b>1304</b> Apt Elev <b>1317</b>
---------------------------	------------------------	---

# ILS Z RWY 31 (SA CAT I)

ROCHESTER INTL (RST)

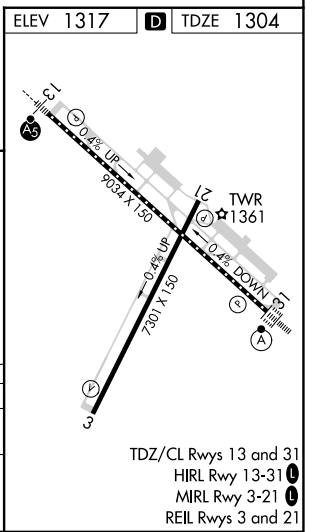
DME required for procedure entry at YESUR.		ALSF-2	MISSED APPROACH: Climb to 2000 then climbing left turn to 3000 direct RST VOR/DME and hold.	
ASR Requires specific OPSPEC, MSPEC, or LOA approval and use of HUD to DH. Procedure NA when tower closed.				

ATIS <b>120.5</b>	ROCHESTER APP CON* <b>119.8 251.125</b>	ROCHESTER TOWER* <b>118.3 (CTAF) 257.8</b>	GND CON <b>121.9</b>	UNICOM <b>122.95</b>
----------------------	--	---	-------------------------	-------------------------



CATEGORY	A	B	C	D
S-ILS 31	RA 204/14 150 DA 1454			

**SA CATEGORY I ILS - SPECIAL AIRCREW & AIRCRAFT CERTIFICATION REQUIRED**



TDZ/CL Rwy 13 and 31  
HIRL Rwy 13-31  
MIRL Rwy 3-21  
REIL Rwy 3 and 21

NC-1, 05 SEP 2024 to 03 OCT 2024

NC-1, 05 SEP 2024 to 03 OCT 2024