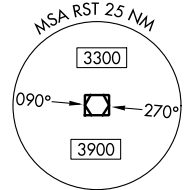
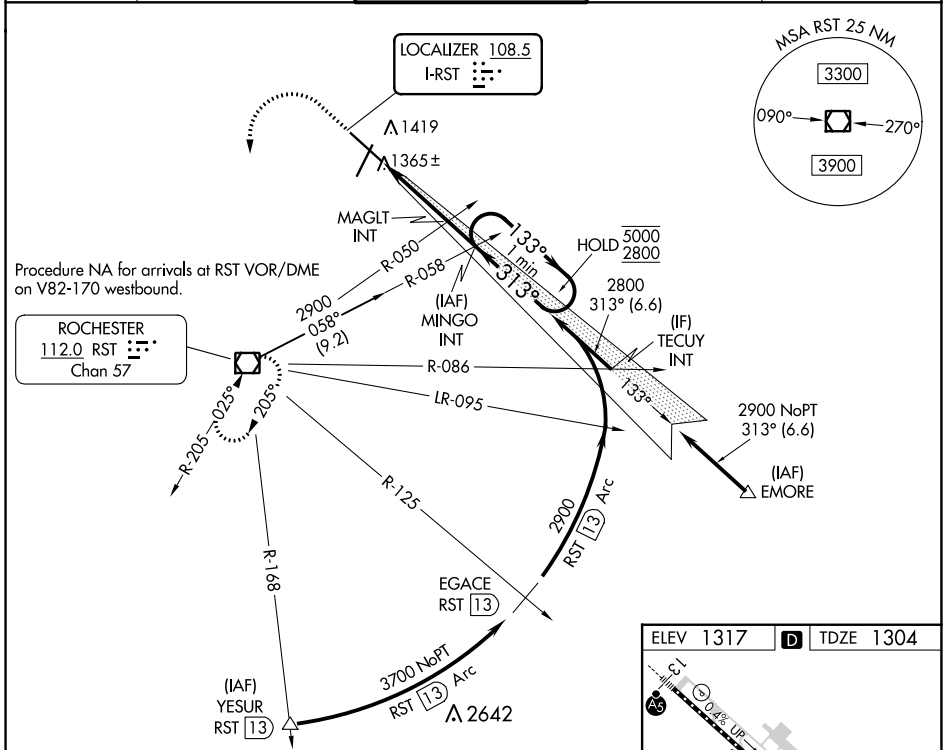


LOC I-RST 108.5	APP CRS 313°	Rwy Idg TDZE Apt Elev	9033 1304 1317
---------------------------	------------------------	-----------------------------	---

ILS Z or LOC Z RWY 31 ROCHESTER INTL (RST)

DME required for procedure entry at YESUR.	ALSF-2 	MISSED APPROACH: Climb to 2000 then climbing left turn to 3000 direct RST VOR/DME and hold.
ASR For inop ALS, increase S-LOC 31 Cat C/D visibility to RVR 4500.		

ATIS 120.5	ROCHESTER APP CON* 119.8 251.125	ROCHESTER TOWER* 118.3 (CTAF) 0 257.8	GND CON 121.9	UNICOM 122.95
----------------------	--	---	-------------------------	-------------------------



	2000	3000	RST	MINGO INT 2800	One Minute Holding Pattern 5000/2800 313° → ← 313° 2380 2800	GS 3.00° TCH 55
	↑	↶				
CATEGORY	A	B	C	D		
S-ILS 31		1504/18	200 (200-½)			
S-LOC 31		1620/24	316 (400-½)			
	1720-1 403 (500-1)	1780-1 463 (500-1)	1900-1½ 583 (600-½)	1900-2 583 (600-2)		

