

APP CRS	Rwy Idg	<b>3800</b>
<b>151°</b>	TDZE	<b>742</b>
	Apt Elev	<b>750</b>

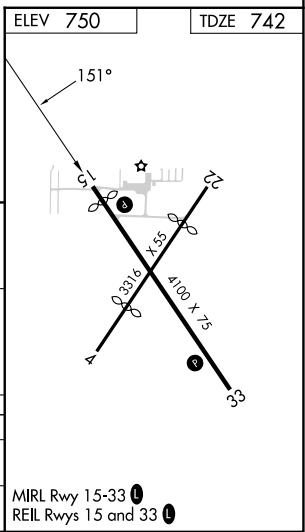
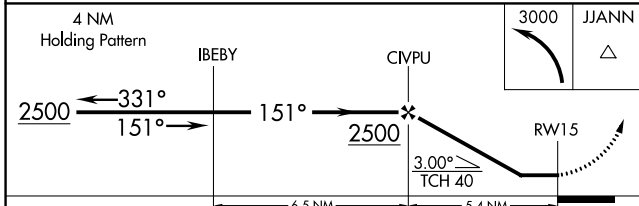
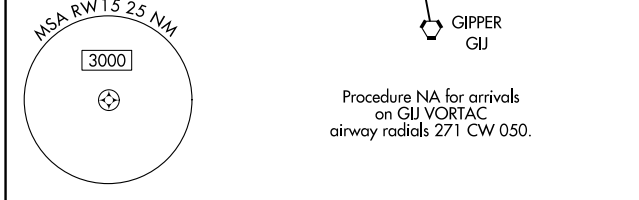
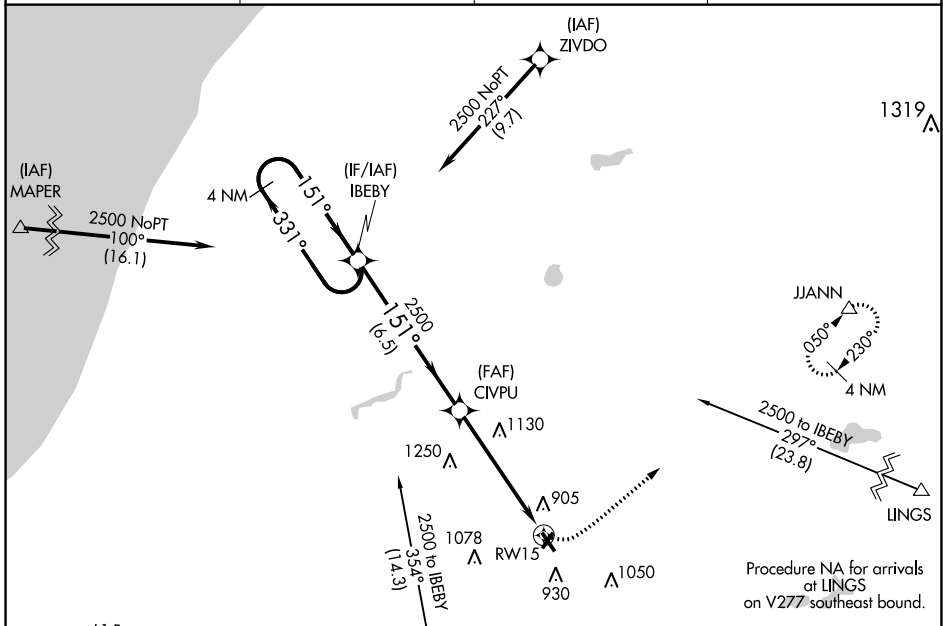
# RNAV (GPS) RWY 15

JERRY TYLER MEML (3TR)

**NA** Use South Bend altimeter setting; when not received use Elkhart altimeter setting and increase all MDA 20 feet. DME/DME RNP-0.3 NA. Procedure NA at night. Visibility reduction by helicopters NA.

**MISSED APPROACH:** Climbing left turn to 3000 direct JJANN and hold.

SBN ASOS <b>120.675</b>	SOUTH BEND APP CON ★ <b>118.55 257.8</b>	GCO <b>121.725</b>	UNICOM <b>122.8 (CTAF) 0</b>
----------------------------	---	-----------------------	---------------------------------



CATEGORY	A	B	C	D
RNAV MDA	1460-1 718 (800-1)		1460-2 718 (800-2)	NA
CIRCLING	1460-1 710 (800-1)		1460-2 710 (800-2)	NA

MIRL Rwy 15-33  
REIL Rwy 15 and 33

EC-1, 05 SEP 2024 to 03 OCT 2024

EC-1, 05 SEP 2024 to 03 OCT 2024