

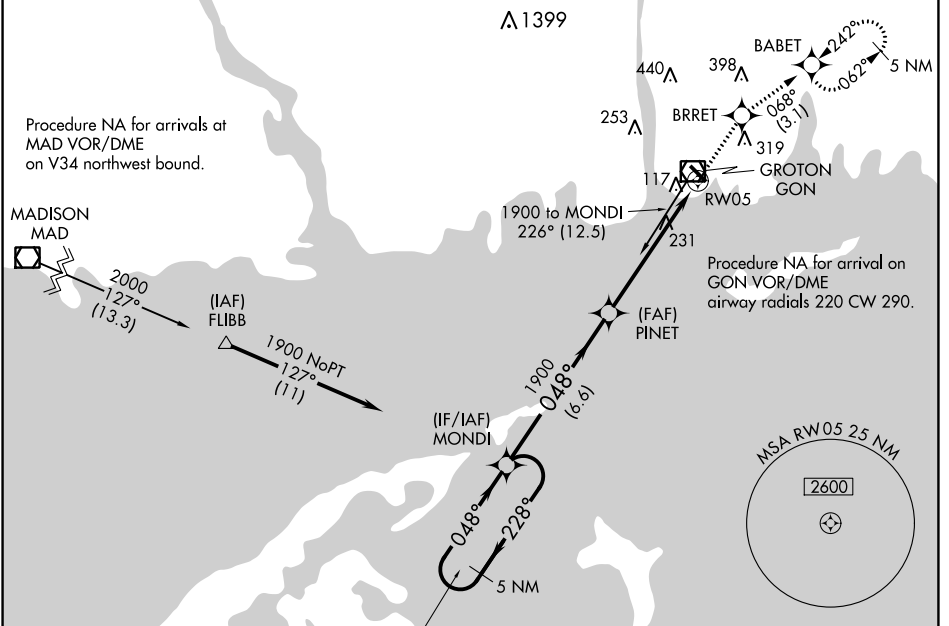
WAAS CH 45521 W05A	APP CRS 048°	Rwy Idg TDZE Apt Elev	5000 8 9
--	------------------------	-----------------------------	-------------------------------------

RNAV (GPS) RWY 5

GROTON-NEW LONDON (GON)

RNP APCH - GPS.	MALSR	MISSED APPROACH: Climb to 2100 direct BRRET and on track 068° to BABET and hold, continue climb-in-hold to 2100.
<p>⚠ Circling Rwy 15 NA at night. For uncompensated Baro-VNAV systems, procedure NA below -15°C or above 54°C. For inop ALS, increase LPV all Cats visibility to RVR 4500 and LNAV Cats visibility C/D to 1%.</p>		

ATIS 127.0	PROVIDENCE APP CON ★ 125.75 319.2	GROTON TOWER ★ 125.6 (CTAF) 0 236.775	GND CON 121.65 236.775	CLNC DEL 119.85 (when twr closed)	CLNC DEL 121.65
----------------------	---	---	----------------------------------	--	---------------------------



NE-1, 05 SEP 2024 to 03 OCT 2024

NE-1, 05 SEP 2024 to 03 OCT 2024

ELEV 9	TDZE 8
--------	--------

5 NM Holding Pattern	MONDI	PINET	BRRET	BABET
	6000 1900	1900	2100	Ir 068°
GP 3.00° TCH 42	228°	048°	048°	068°
	6.6 NM	4.3 NM	1.4 NM	
CATEGORY	A	B	C	D
LPV DA		292/24	284 (300-½)	
LNAV/VNAV DA		533/55	525 (600-1)	
LNAV MDA	500/24	492 (500-½)	500/50	492 (500-1)
CIRCLING	580-1 571 (600-1)	620-1 611 (700-1)	700-2 691 (700-2)	840-2¾ 831 (900-2¾)

