

LOC I-CSV <b>109.1</b>	APP CRS <b>255°</b>	Rwy Idg TDZE Apt Elev	<b>5423</b> <b>1871</b> <b>1882</b>
---------------------------	------------------------	-----------------------------	---

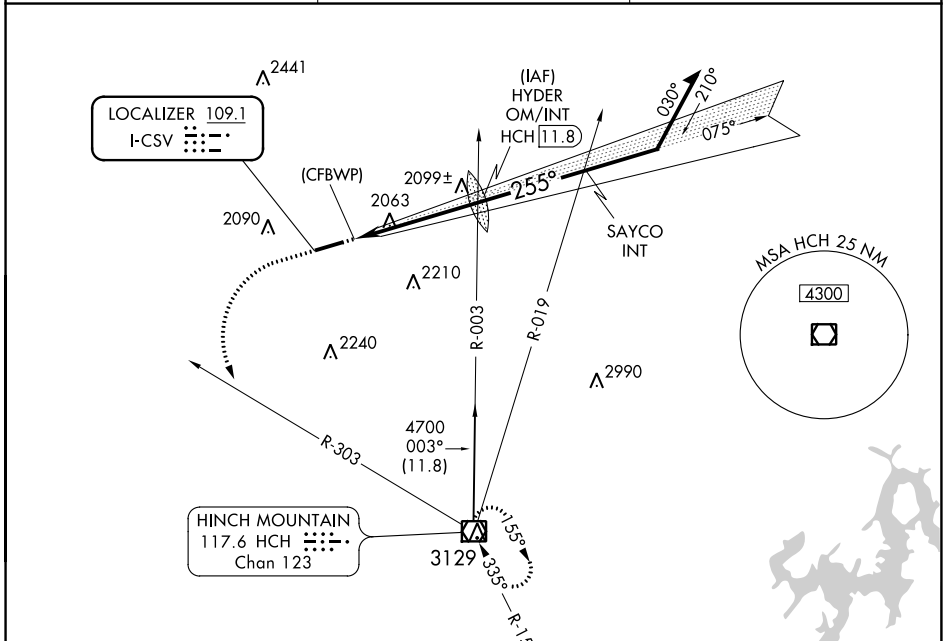
# ILS Z or LOC Z RWY 26

CROSSVILLE MEML-WHITSON FLD (CSV)

**⚠** Autopilot coupled approach NA below 2500. Procedure NA at night. Rwy 26 helicopter visibility reduction below 1 SM NA.

**⚠** MISSED APPROACH: Climb to 3000 then climbing left turn to 5000 on heading 180° and HCH VOR/DME R-303 to HCH VOR/DME and hold.

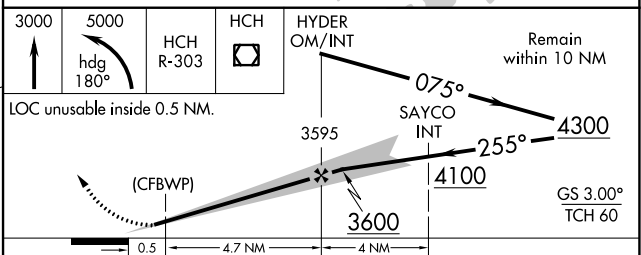
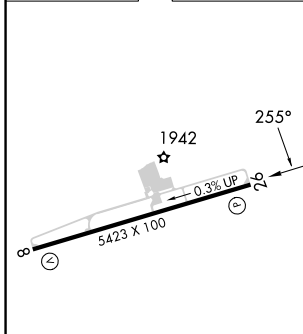
ASOS <b>120.625</b>	ATLANTA CENTER <b>133.6 254.3</b>	UNICOM <b>122.7 (CTAF) 0</b>
------------------------	--------------------------------------	---------------------------------



SE-1, 05 SEP 2024 to 03 OCT 2024

SE-1, 05 SEP 2024 to 03 OCT 2024

ELEV 1882	TDZE 1871
-----------	-----------



CATEGORY	A	B	C	D
S-ILS 26	2121-1 250 (300-1)			
S-LOC 26	2440-1	569 (600-1)	2440-1½	569 (600-1½)
<input checked="" type="checkbox"/> CIRCLING	2440-1	558 (600-1)	2440-1½	2540-2 658 (700-2)

REIL Rwy 26  
HIRL Rwy 8-26 0

FAF to MAP 4.7 NM

Knots	60	90	120	150	180
Min:Sec	4:42	3:08	2:21	1:53	1:34