

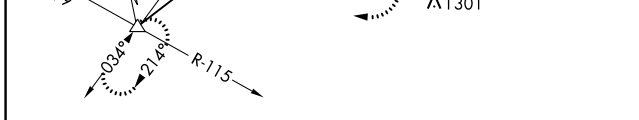
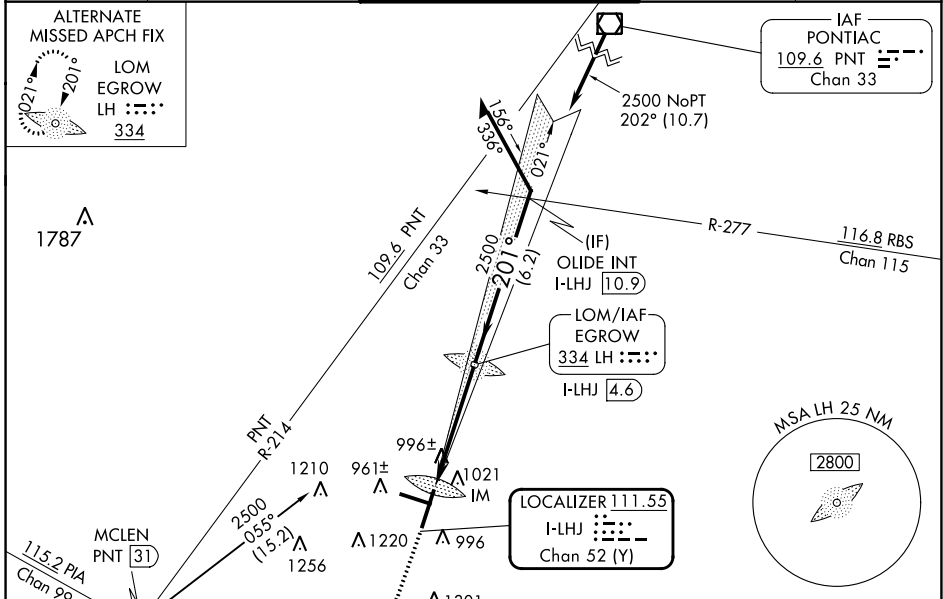
LOC/DME I-LHJ <b>111.55</b> Chan <b>52 (Y)</b>	APP CRS <b>201°</b>	Rwy Idg TDZE Apt Elev	<b>8000</b> <b>871</b> <b>871</b>
--	------------------------	-----------------------------	---

# ILS RWY 20 (CAT II)

CENTRAL IL RGNL/BLOOMINGTON-NORMAL (BMI)

<p>Procedure NA when tower closed.</p>	<p>ALSF-2</p>	<p>MISSED APPROACH: Climb to 1500 then climbing right turn to 3000 on heading 270° and on PNT VOR/DME R-214 to MCLEN INT/PNT 31 DME and hold.</p>

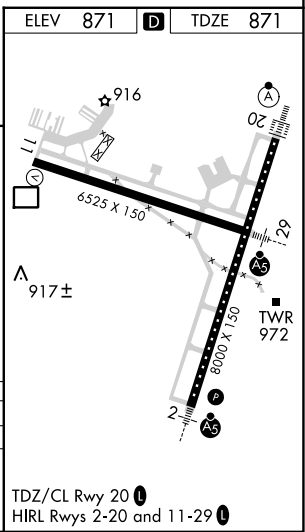
<p>ATIS <b>119.575</b></p>	<p>SAINT LOUIS APP CON <b>128.725 256.9</b></p>	<p>BLOOMINGTON TOWER ★ <b>124.6 (CTAF) 269.575</b></p>	<p>GND CON <b>121.65</b></p>	<p>UNICOM <b>122.95</b></p>
--------------------------------	---	--	----------------------------------	---------------------------------



<p>1500</p> <p>3000</p> <p>hdg 270°</p>	<p>PNT R-214</p>	<p>MCLEN</p>	<p>LH LOM I-LHJ (4.6)</p>	<p>Remain within 10 NM</p>
<p>1048' 4.8 NM</p>				

CATEGORY	A	B	C	D
S-ILS-20	RA 122/12 100 DA 971			

**CATEGORY II ILS - SPECIAL AIRCREW & AIRCRAFT CERTIFICATION REQUIRED**



EC-3, 05 SEP 2024 to 03 OCT 2024

EC-3, 05 SEP 2024 to 03 OCT 2024