

LOC/DME I-BMI <b>110.95</b> Chan <b>46 (Y)</b>	APP CRS <b>111°</b>	Rwy Idg TDZE Apt Elev	<b>6525</b> <b>871</b> <b>871</b>
--	------------------------	-----------------------------	---

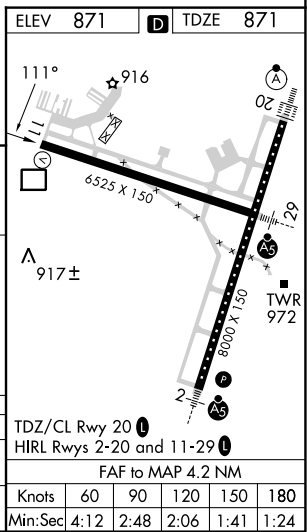
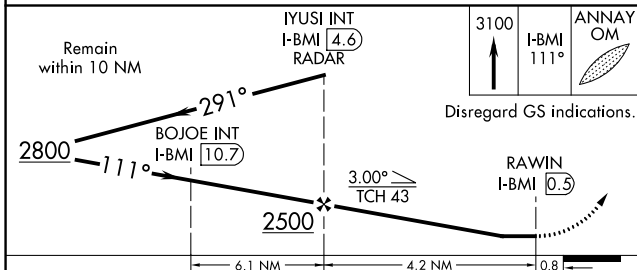
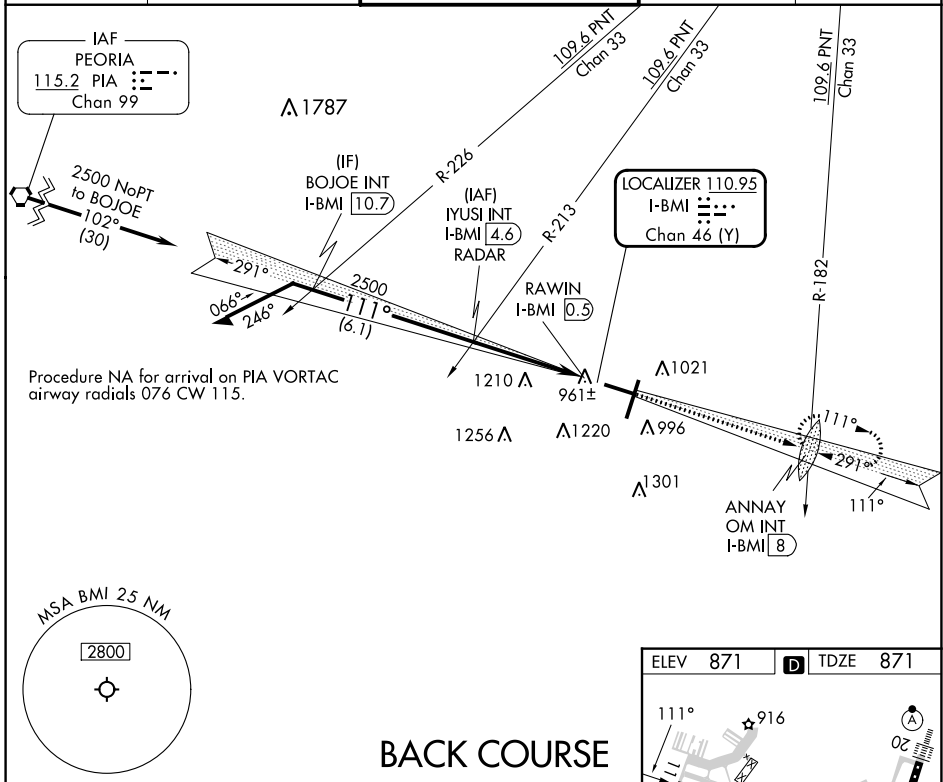
# LOC BC RWY 11

CENTRAL IL RGNL/BLOOMINGTON-NORMAL (BMI)

RADAR required for procedure entry at IYUSI.

**MISSED APPROACH:** Climb to 3100 on I-BMI localizer SE course 111° to ANNAY OM INT/I-BMI 8 DME and hold, continue climb-in-hold to 3100.

ATIS <b>119.575</b>	SAINT LOUIS APP CON <b>128.725 256.9</b>	BLOOMINGTON TOWER * <b>124.6 (CTAF) 269.575</b>	GND CON <b>121.65</b>	UNICOM <b>122.95</b>
------------------------	---	--	--------------------------	-------------------------



CATEGORY	A	B	C	D	Knots	60	90	120	150	180
S-LOC BC 11	1280-1	409 (500-1)	1280-1½	409 (500-1½)	Min:Sec	4:12	2:48	2:06	1:41	1:24
CIRCLING	1340-1	469 (500-1)	1620-2¼	1620-2½						

EC-3, 05 SEP 2024 to 03 OCT 2024

EC-3, 05 SEP 2024 to 03 OCT 2024