

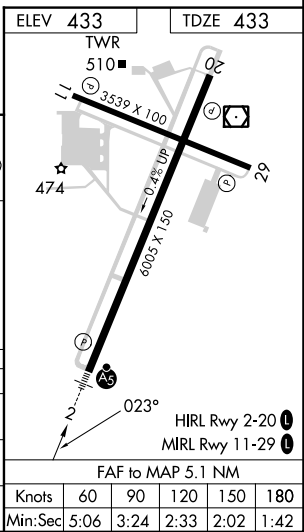
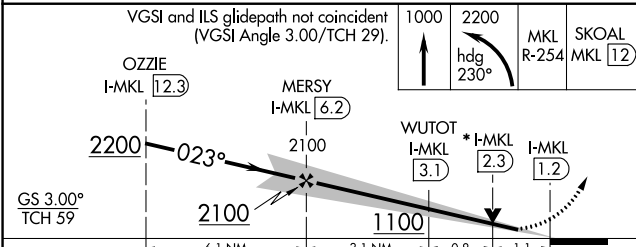
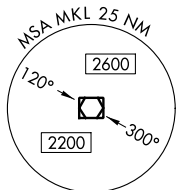
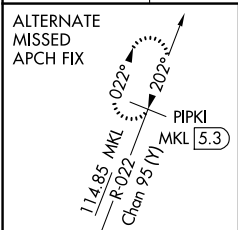
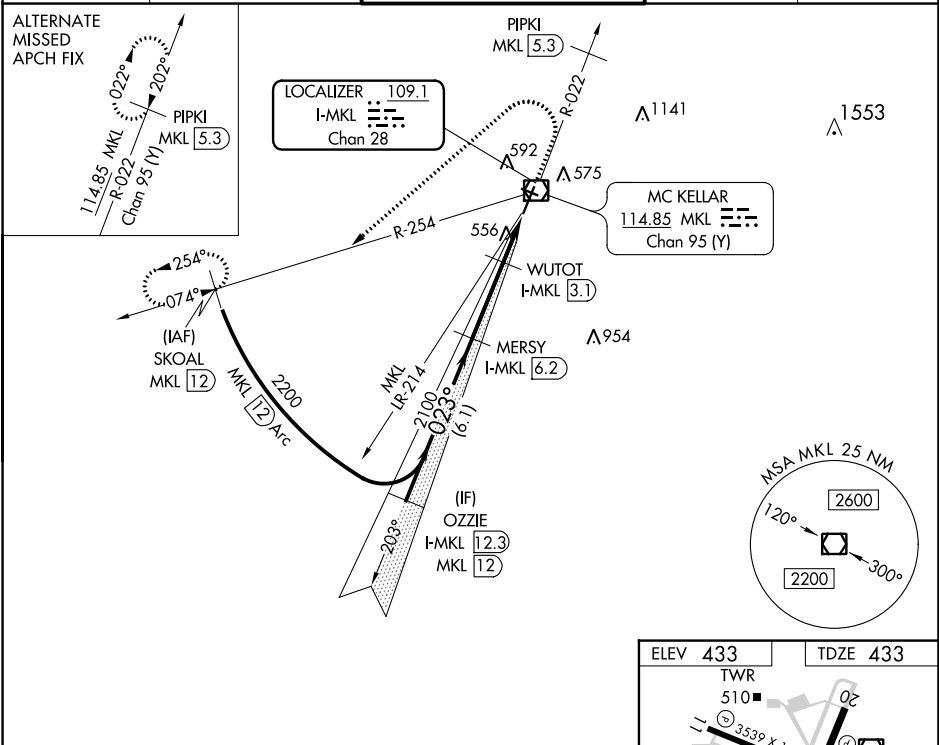
LOC/DME I-MKL 109.1 Chan 28	APP CRS 023°	Rwy Idg 6005 TDZE 433 Apt Elev 433
---	------------------------	---

ILS or LOC RWY 2

MC KELLAR-SIPES RGNL (MKL)

DME required. RADAR required for procedure entry.		MALS R	MISSED APPROACH: Climb to 1000 then climbing left turn to 2200 on heading 230° and MKL VOR/DME R-254 to SKOAL/MKL 12 DME and hold.
<p>▼ Rwy 2 helicopter visibility reduction below 3/4 SM NA. For inop ALS, increase S-LOC 2 Cat A/B visibility to 1 SM and Cat C/D visibility 1 1/2 SM.</p> <p>▲</p>			

ASOS 119.325	MEMPHIS CENTER 134.65 316.15	JACKSON TOWER ★ 127.15 (CTAF) 0 249.95	GND CON 120.9	UNICOM 122.95
------------------------	--	--	-------------------------	-------------------------



CATEGORY	A	B	C	D
S-ILS 2		770-3/4	337 (400-3/4)	
S-LOC 2		820-3/4	387 (400-3/4)	
CIRCLING	900-1 467 (500-1)	920-1 487 (500-1)	960-1 1/2 527 (600-1 1/2)	1100-2 667 (700-2)

SE-1, 05 SEP 2024 to 03 OCT 2024

SE-1, 05 SEP 2024 to 03 OCT 2024

ELEV 433	TDZE 433
TWR 510	
3.539 X 100	
6005 X 1.30	
023°	
HIRL Rwy 2-20	
MIRL Rwy 11-29	
FAF to MAP 5.1 NM	
Knots	60 90 120 150 180
Min:Sec	5:06 3:24 2:33 2:02 1:42