

APP CRS	Rwy Idg	<b>7201</b>
<b>252°</b>	TDZE	<b>2341</b>
	Apt Elev	<b>2351</b>

# RNAV (GPS) RWY 24

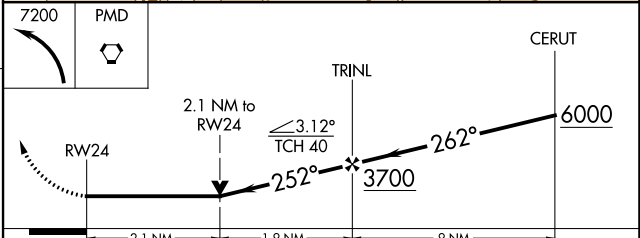
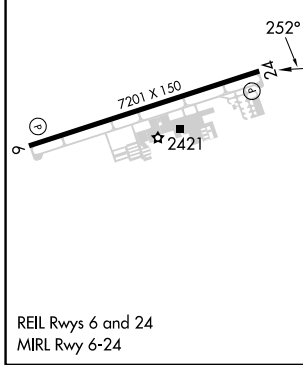
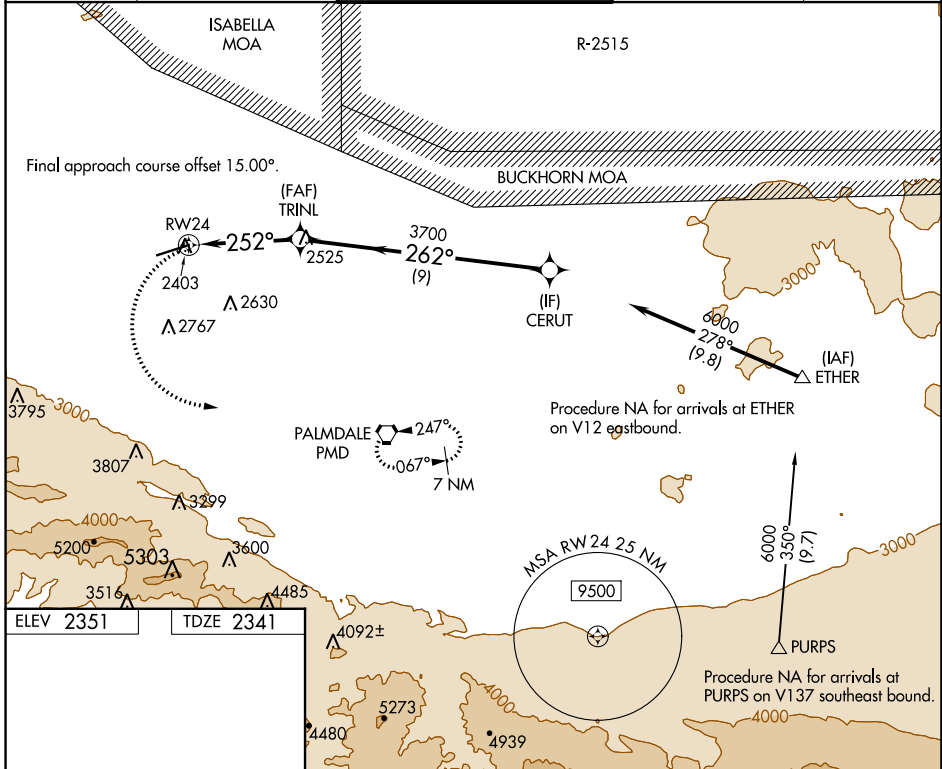
GENERAL WM J FOX AIRFIELD (WJF)

RNP APCH - GPS.

▼ Rwy 24 helicopter visibility reduction below 3/4 NA. VDP NA when using  
 ▲ Palmdale altimeter setting. When local altimeter setting not received, use  
 Palmdale altimeter setting and increase all MDAs 60 feet and LNAV  
 visibility Cat C/D 1/8 SM, and Circling visibility Cat C/D 1/4 SM.

MISSED APPROACH: (Do not exceed 210K until  
 PMD VORTAC) Climbing left turn to 7200 direct  
 PMD VORTAC and hold, continue climb-in-hold  
 7200.

ATIS	JOSHUA APP CON	FOX TOWER*	GND CON	UNICOM
<b>126.3</b>	<b>126.1 290.3</b>	<b>118.525 (CTAF) 256.9</b>	<b>121.7 256.9</b>	<b>122.95</b>



CATEGORY	A	B	C	D
LNAV MDA	3060-1	719 (800-1)	3060-2	719 (800-2)
CIRCLING	3060-1	709 (800-1)	3120-2 1/4 769 (800-2 1/4)	3120-2 1/2 769 (800-2 1/2)

SW-3, 05 SEP 2024 to 03 OCT 2024

SW-3, 05 SEP 2024 to 03 OCT 2024