

MERIDIAN, MISSISSIPPI

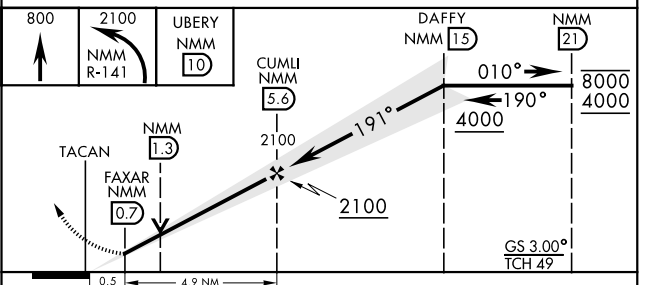
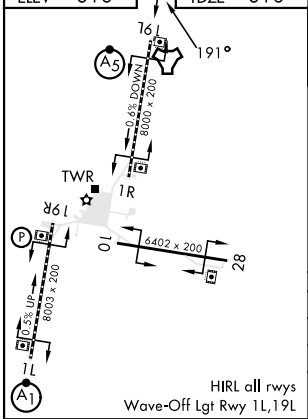
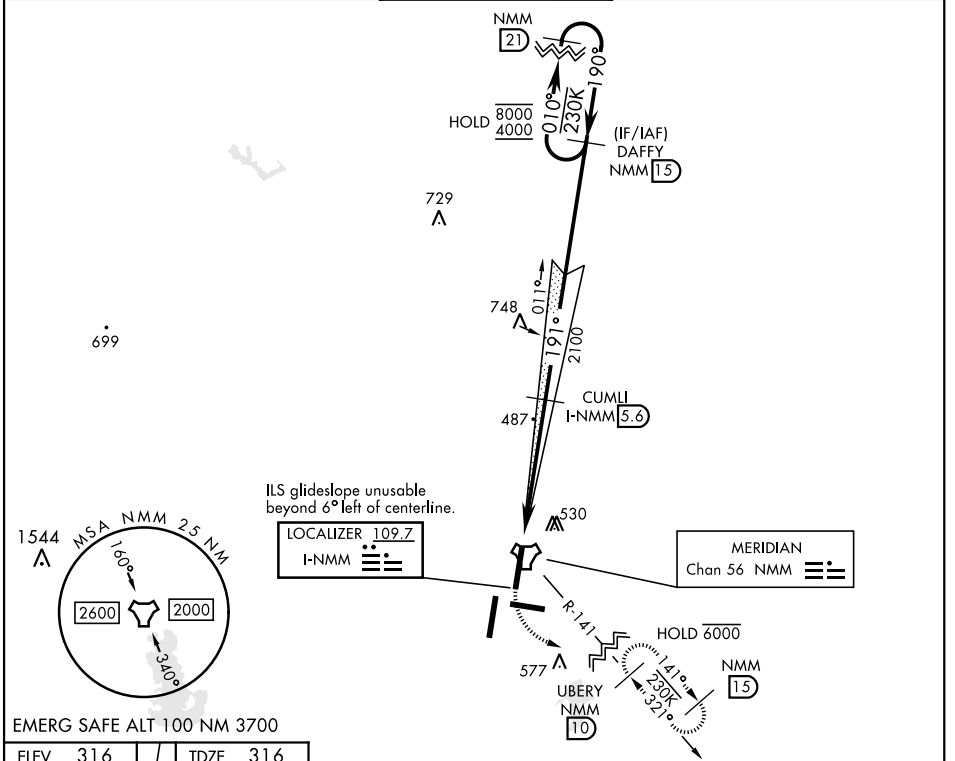
# ILS Y or LOC/DME Y RWY 19L

LOC I-NMM <b>109.7</b>	APCH CRS <b>191°</b>	Rwy Idg 8000 TDZE 316 Arprt Elev 316
---------------------------	-------------------------	---

AL-5079 [USN]

MERIDIAN NAS (MC CAIN FIELD) (KNMM)

RADAR required. * When ALS inop, increase vis to ¾ mile. ** When ALS inop, increase CAT AB vis to 1 mile, CAT CD vis to 1½ miles.		MALS R A5	MISSED APPROACH: Climb to 800, then climbing left turn to 2100 to intercept NMM R-141 to UBERY and hold.		
ATIS ★ <b>290.525</b>	APP CON <b>120.95 276.4</b>	NAVY MC CAIN TOWER ★ <b>126.2 340.2</b>	GND CON <b>336.4</b>	CLNC DEL <b>301.0</b>	ASR/PAR



CATEGORY	A	B	C	D
S-ILS 19L *	516-½		200	(200-½)
S-LOC 19L **	740-½	424 (500-½)	740-¾	424 (500-¾)
CIRCLING	820-1 504 (600-1)	840-1 524 (600-1)	840-1 ½ 524 (600-1 ½)	880-2 564 (600-2)

MERIDIAN, MISSISSIPPI  
Orig 03NOV22

32°33'N-88°33'W

MERIDIAN NAS (MC CAIN FIELD) (KNMM)

# ILS Y or LOC/DME Y RWY 19L

SC-4, 05 SEP 2024 to 03 OCT 2024

SC-4, 05 SEP 2024 to 03 OCT 2024