

MERIDIAN, MISSISSIPPI

RNAV (GPS) RWY 1L

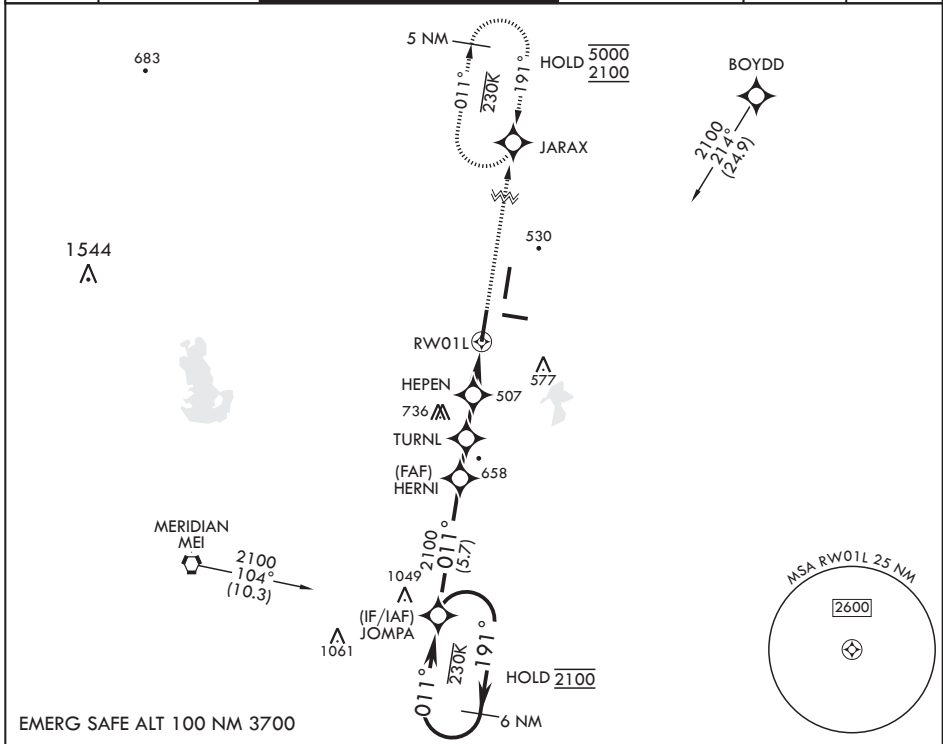
APCH CRS 011°	Rwy Idg TDZE Arprt Elev	8003 254 316
------------------	-------------------------------	--------------------

AL-5079 (USN)

MERIDIAN NAS (MC CAIN FLD) (KNMM)

RNP APCH.	ALSF-1	MISSED APPROACH: Climb to 2100 direct JARAX and hold.
-----------	--------	---

ATIS* 290.525	APP CON 120.5 269.325 S 379.275 N 120.95 276.4 W 121.275 348.7 E	MC CAIN TOWER* 126.2 340.2 RWY 01L, 19L AND 28 126.2 360.2 RWY 01R, 19R AND 10	MC CAIN GND CON 336.4	CLNC DEL 301.0	ASR/PAR
------------------	--	--	--------------------------	-------------------	---------



EMERG SAFE ALT 100 NM 3700

6 NM holding pattern	JOMPA	HERNI	TURNL	HEPEN	RW01L	JARAX	ELEV 316	TDZE 254
2100	2100	1500	940	1.4 NM to RW01L	RW01L	2100	316	254
011°	011°	011°	3.00° TCH 50	1.7 NM	1.8 NM	2.2 NM		
CATEGORY	A	B	C	D	E			
LNAV MDA*	760-½	506 (500-½)	760-1	506	(500-1)			
CIRCLING	820-1 504 (600-1)	840-1 524 (600-1)	840-1½ 524 (600-1½)	880-2 564 (600-2)	1080-2¾ 764 (800-2¾)			

8000 x 200 0.6% UP
861 761
TWR 1R
BCN 01L 28
8003 x 200 0.5% UP
011°

HIRL all Rwys
Wave-Off Lights Rwy 1L, 19L

MERIDIAN, MISSISSIPPI

32°33'N - 88°33'W

MERIDIAN NAS (MC CAIN FLD) (KNMM)

Amdt 4 08SEP22

RNAV (GPS) RWY 1L

SC-4, 05 SEP 2024 to 03 OCT 2024

SC-4, 05 SEP 2024 to 03 OCT 2024