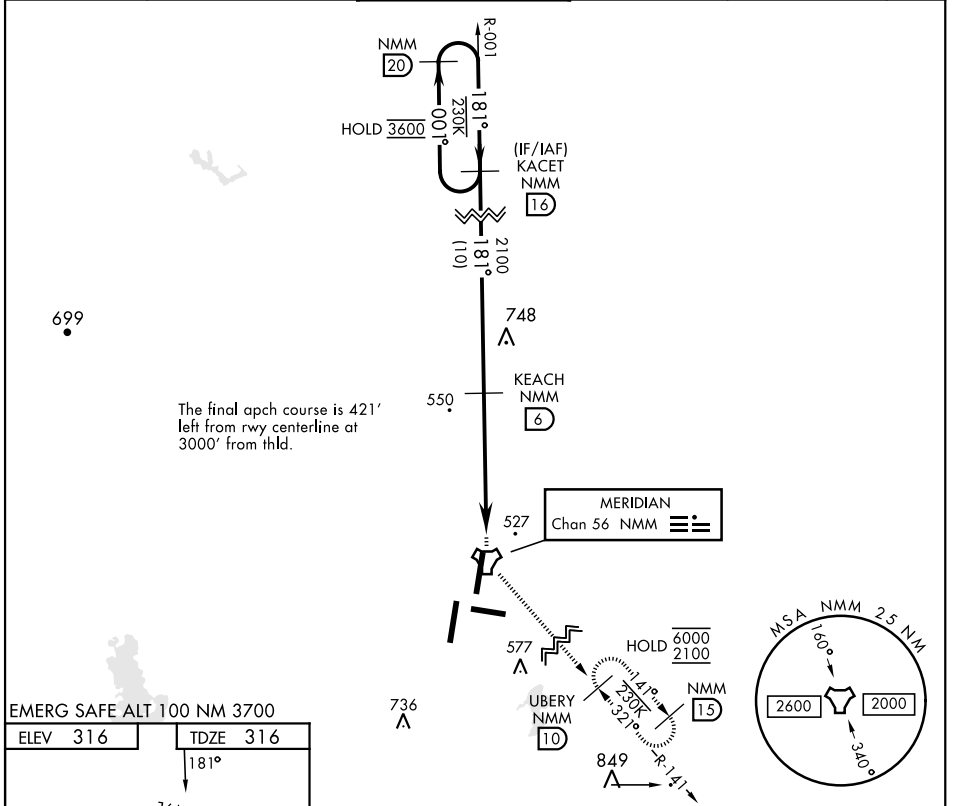


TACAN Y RWY 19L

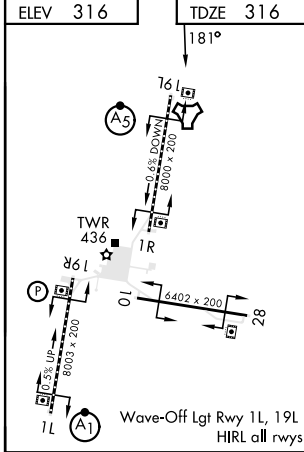
TACAN NMM Chan 56	APCH CRS 181°	Rwy Idg TDZE 316 Arprt Elev 316	AL-5079 [USN]	MERIDIAN NAS (MC CAIN FIELD) (KNMM)
RADAR required.			MALSR	MISSED APPROACH: Climb to 2100 direct NMM TACAN then via R-141 to UBERY and hold.
* When ALS inop, increase CAT AB vis to 1 mile; CDE vis to 1/8 miles.				

ATIS ★ 290.525	APP CON 120.95 276.4	NAVY MC CAIN TOWER ★ 126.2 340.2	GND CON 336.4	CLNC DEL 301.0	ASR/PAR
-----------------------	-----------------------------	---	----------------------	-----------------------	---------



The final apch course is 421' left from rwy centerline at 3000' from thld.

EMERG SAFE ALT 100 NM 3700



This diagram shows the transition from the KEACH NMM 6 to the TACAN and VERTC. It indicates a climb to 2100 feet, a turn to R-141, and a hold at 6000 feet. The distance from KEACH NMM 6 to TACAN is 5.3 NM. The TACAN frequency is 2100 MHz, and the VERTC frequency is 0.7 MHz. The diagram also shows the distance from TACAN to VERTC as 0.5 NM.

CATEGORY	A	B	C	D	E
S-19L *	800-1/2 484	(500-1/2)	800-1	484	(500-1)
CIRCLING	820-1 504 (600-1)	840-1 524 (600-1)	840-1 1/2 524 (600-1 1/2)	880-2 564 (600-2)	1080-2 3/4 764 (800-2 3/4)

TACAN Y RWY 19L

SC-4, 05 SEP 2024 to 03 OCT 2024

SC-4, 05 SEP 2024 to 03 OCT 2024