

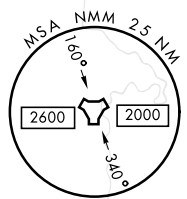
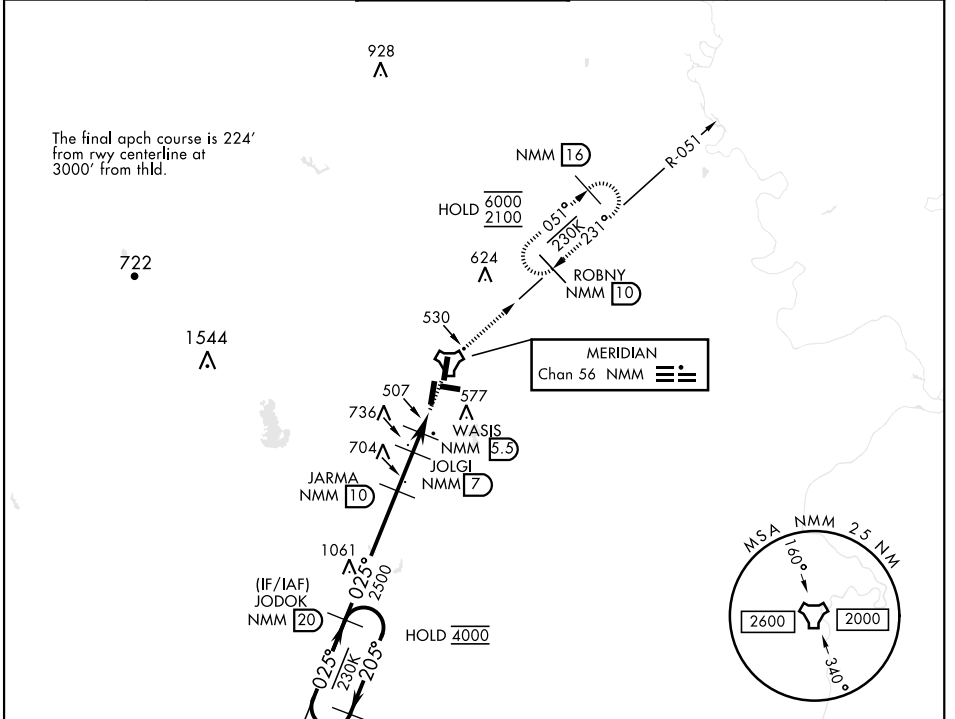
MERIDIAN, MISSISSIPPI

TACAN Y RWY 1L

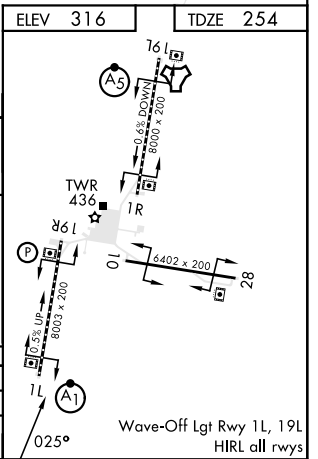
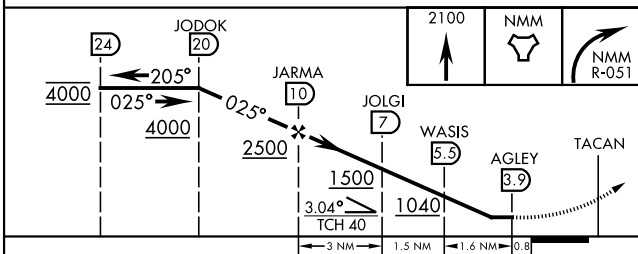
TACAN NMM Chan 56	APCH CRS 025°	Rwy Idg 8003 TDZE 254 Arprt Elev 316	AL-5079 [USN]	MERIDIAN NAS (MC CAIN FIELD) (KNMM)
--------------------------	----------------------	---	---------------	-------------------------------------

RADAR required.	ALSIF-1	MISSED APPROACH: Climb to 2100 direct NMM TACAN then via R-051 to ROBNY and hold.
* When ALS inop, increase CAT AB vis to 1 mile; CAT CDE vis to 1 1/8 miles.		

ATIS * 290.525	APP CON 120.95 276.4	NAVY MC CAIN TOWER * 126.2 340.2	GND CON 336.4	CLNC DEL 301.0	ASR/PAR
-----------------------	-----------------------------	---	----------------------	-----------------------	---------



ELEV 316	TDZE 254
----------	----------



CATEGORY	A	B	C	D	E
S-1L *	760-1/2	506 (500-1/2)	760-1	506 (500-1)	
CIRCLING	820-1 504 (600-1)	840-1 524 (600-1)	840-1 1/2 524 (600-1 1/2)	880-2 564 (600-2)	1080-2 3/4 764 (800-2 3/4)

MERIDIAN, MISSISSIPPI 32°33' N -88°33' W MERIDIAN NAS (MC CAIN FIELD) (KNMM)

Amtd 3 08SEP22

TACAN Y RWY 1L

SC-4, 05 SEP 2024 to 03 OCT 2024

SC-4, 05 SEP 2024 to 03 OCT 2024