

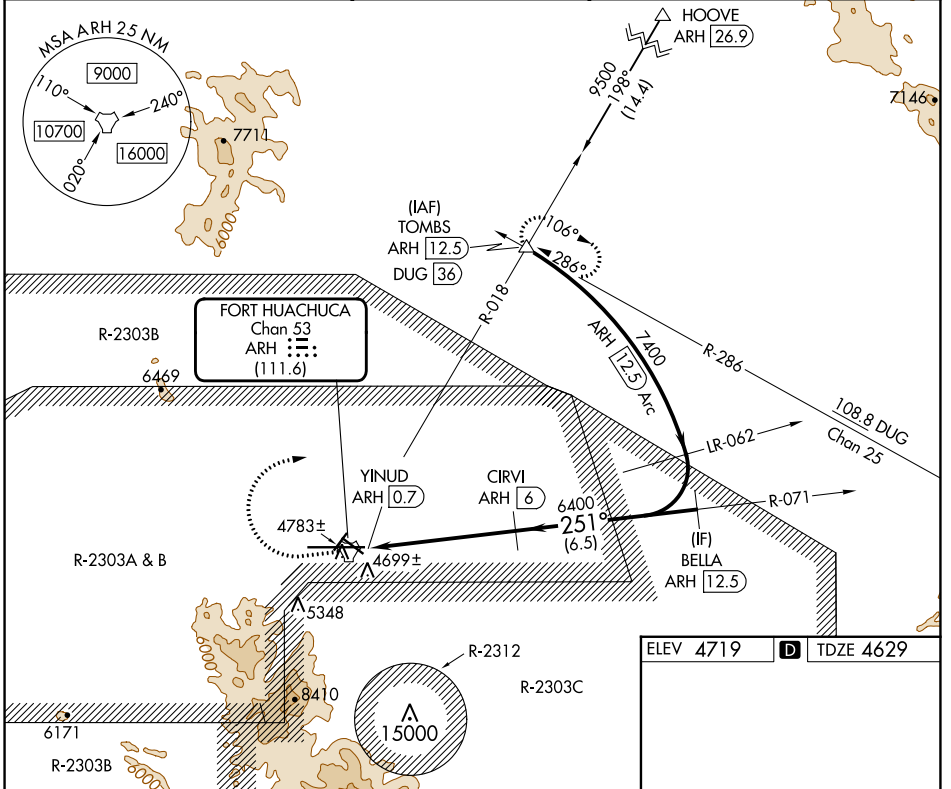
TACAN ARH Chan <b>53</b> <b>(111.6)</b>	APP CRS <b>251°</b>	Rwy Idg <b>12001</b> TDZE <b>4629</b> Apt Elev <b>4719</b>
---	------------------------	--

# TACAN RWY 26

SIERRA VISTA MUNI-LIBBY AAF (FHU)

<p>Circling NA south of Rws 8 and 30.</p>	<p>MISSED APPROACH: Climb to 5300 then climbing right turn to 9500 on ARH R-018 to TOMBS INT/DUG 36 DME and hold.</p>
---	---

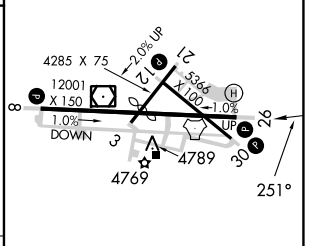
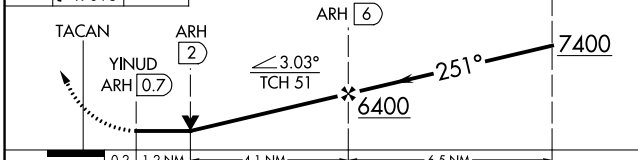
<p>ATIS <b>134.75 263.025</b></p>	<p>LIBBY AAF GCA★ <b>127.05 254.25</b></p>	<p>LIBBY TOWER★ <b>124.95 (CTAF) 284.75</b></p>	<p>GND CON <b>121.7 268.7</b></p>	<p>UNICOM <b>122.95</b></p>
---------------------------------------	--	---	---------------------------------------	---------------------------------



SW-4, 05 SEP 2024 to 03 OCT 2024

SW-4, 05 SEP 2024 to 03 OCT 2024

<p>5300 ↑</p>	<p>9500 ↘ ARH R-018</p>	<p>TOMBS △</p>	<p>VGSI and descent angles not coincident (VGSI Angle 3.00/TCH 80).</p>
-------------------	---------------------------------	--------------------	---



CATEGORY	A	B	C	D	E
S-26	5100-1 471 (400-1)	471 (400-1)	5100-1¼ 471 (400-1¼)	5100-1½ 471 (400-1½)	5100-1¾ 471 (400-1¾)
CIRCLING	5160-1 441 (500-1)	5180-1 461 (500-1)	5180-1½ 461 (500-1½)	5280-2	561 (600-2)

HIRL Rwy 8-26  
MIRL Rws 3-21 and 12-30