

APP CRS	Rwy Idg	<b>4001</b>
<b>104°</b>	TDZE	<b>1057</b>
	Apt Elev	<b>1072</b>

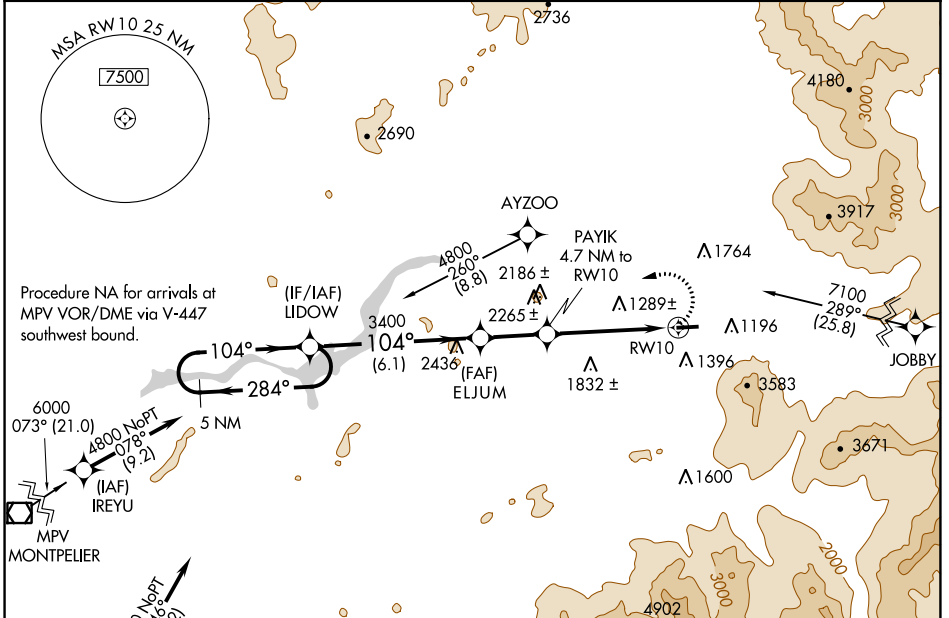
# RNAV (GPS) Y RWY 10

MOUNT WASHINGTON RGNL (HIE)

**⚠** Circling NA south of Rwy 10-28. DME/DME RNP-0.3 NA. Visibility reduction by helicopters NA. When local altimeter setting not received, use Lyndonville altimeter setting and increase all MDA 80 feet; increase LNAV and Circling Cat B/C visibilities ¼ mile. VDP NA with Lyndonville altimeter setting. Circling to Rwy 28 NA at night.

**⚠** MISSED APPROACH: Climbing left turn to 4800 direct LIDOW and hold.

ASOS <b>118.525</b>	BOSTON CENTER <b>135.7 282.2</b>	UNICOM <b>122.8 (CTAF) 0</b>
------------------------	-------------------------------------	---------------------------------

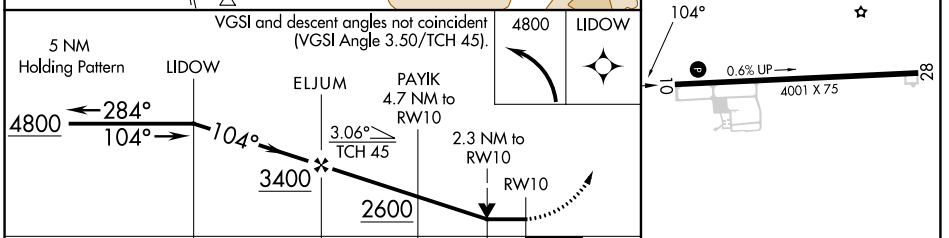


NE-1, 05 SEP 2024 to 03 OCT 2024

NE-1, 05 SEP 2024 to 03 OCT 2024

ELEV 1072	TDZE 1057
-----------	-----------

Procedure NA for arrivals at MPV VOR/DME via V-447 southwest bound.



CATEGORY	A	B	C	D
LNAV MDA	1940-1¼	883 (900-1¼)	1940-2¾ 883 (900-2¾)	NA
CIRCLING	1940-1¼	868 (900-1¼)	1980-2¾ 908 (1000-2¾)	NA

REIL Rwy 10 and 28 0  
MIRL Rwy 10-28 0