

LOC/DME I-LCH 109.1 Chan 28	APP CRS 152°	Rwy Idg 6500 TDZE 12 Apt Elev 15
--	------------------------	---

ILS or LOC RWY 15

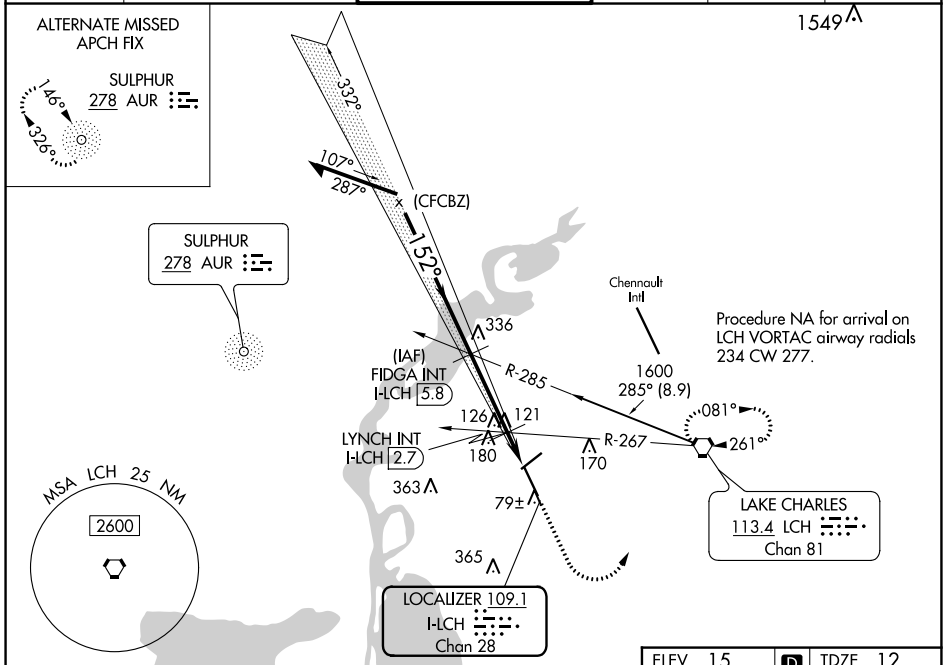
LAKE CHARLES RGNL (LCH)

⚠ For inop ALS, increase S-LOC 15 Cats C and D visibility to 1½ mile.
ASR * RVR 1800 authorized with use of FD or AP or HUD to DA.

MALSR

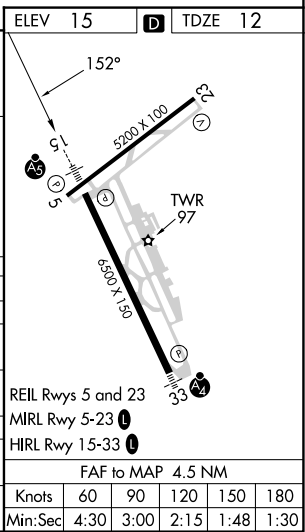
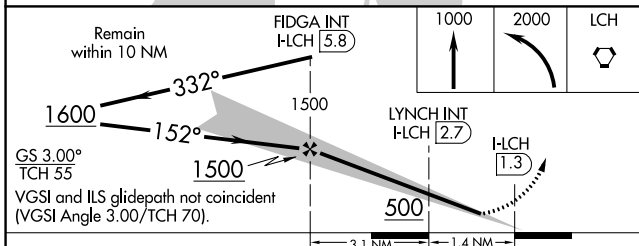
MISSED APPROACH: Climb to 1000 then climbing left turn to 2000 direct LCH VORTAC and hold, continue climb-in-hold to 2000.

ATIS 118.75	LAKE CHARLES APP CON * 119.35 353.75	LAKE CHARLES TOWER * 120.7 (CTAF) 257.8	GND CON 121.8	CLNC DEL 126.25	UNICOM 122.95
-----------------------	--	---	-------------------------	---------------------------	-------------------------



SC-4, 05 SEP 2024 to 03 OCT 2024

SC-4, 05 SEP 2024 to 03 OCT 2024



CATEGORY	A	B	C	D
S-ILS 15*	212/24 200 (200-½)			
S-LOC 15	500/24	488 (500-½)	500/50	488 (500-1)
C CIRCLING	500-1	485 (500-1)	580-1½ 565 (600-1½)	680-2 665 (700-2)
LYNCH FIX MINIMUMS (DUAL VOR RECEIVERS OR DME REQUIRED)				
S-LOC 15	440/24	428 (500-½)	440/40	428 (500-¾)
C CIRCLING	440-1 425 (500-1)	480-1 465 (500-1)	580-1½ 565 (600-1½)	680-2 665 (700-2)

REIL Rwy 5 and 23
MIRL Rwy 5-23 **Ⓛ**
HIRL Rwy 15-33 **Ⓛ**

FAF to MAP 4.5 NM

Knots	60	90	120	150	180
Min:Sec	4:30	3:00	2:15	1:48	1:30