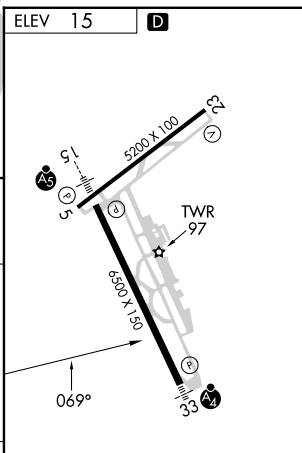
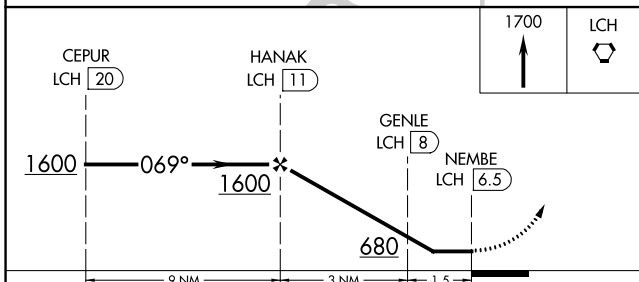
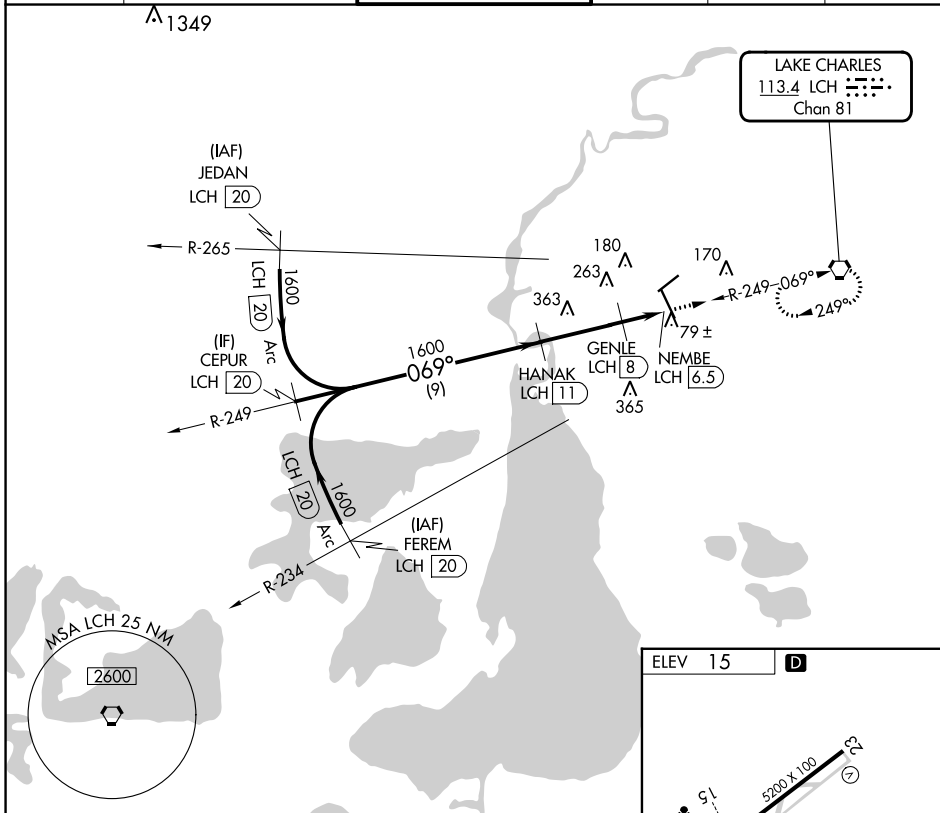


VORTAC LCH <b>113.4</b> Chan 81	APP CRS <b>069°</b>	Rwy Idg TDZE Apt Elev	<b>N/A</b> <b>N/A</b> <b>15</b>
---------------------------------------	------------------------	-----------------------------	---------------------------------------

**VOR-B**  
LAKE CHARLES RGNL (LCH)

DME required.		MISSED APPROACH: Climb to 1700 direct LCH VORTAC and hold.			
ATIS <b>118.75</b>	LAKE CHARLES APP CON* <b>119.35 353.75</b>	LAKE CHARLES TOWER* <b>120.7 (CTAF) 257.8</b>	GND CON <b>121.8</b>	CLNC DEL <b>126.25</b>	UNICOM <b>122.95</b>



CATEGORY	A	B	C	D
CIRCLING	500-1	485 (500-1)	580-1½ 565 (600-1½)	680-2 665 (700-2)

REIL Rwys 5 and 23  
MRL Rwy 5-23  
HIRL Rwy 15-33

SC-4, 05 SEP 2024 to 03 OCT 2024

SC-4, 05 SEP 2024 to 03 OCT 2024