

LOC/DME I-ONA 109.35 Chan 30(Y)	APP CRS 300°	Rwy ldg 5199 TDZE 656 Apt Elev 656
---	------------------------	---

ILS Z or LOC Z RWY 30

WINONA MUNI-MAX CONRAD FIELD (ONA)

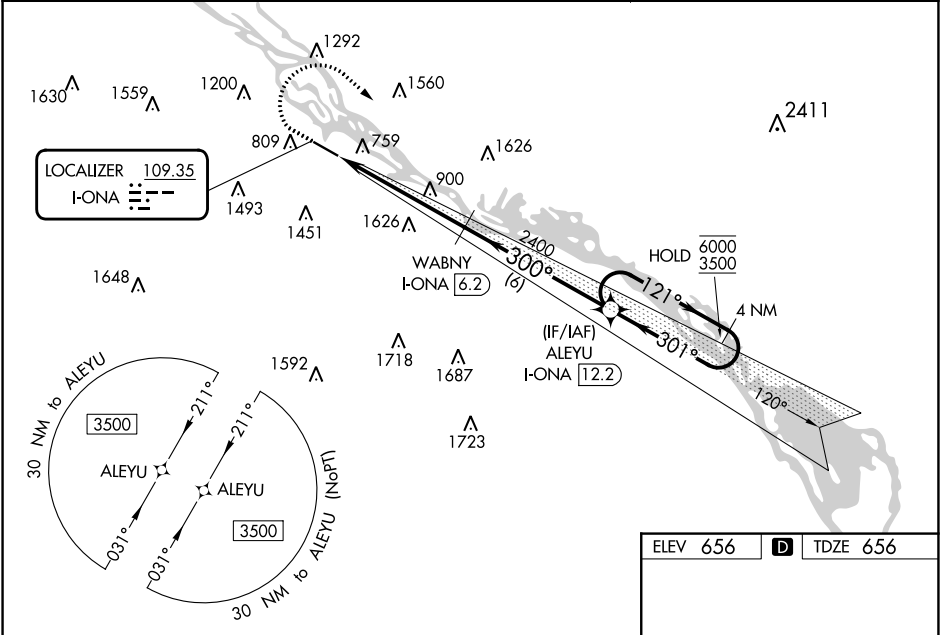
RNAV 1-GPS or radar required for procedure entry. DME required.
RNAV-1 GPS required from MAP to ALEYU.

V VDP NA with La Crosse altimeter setting. When local altimeter setting not received, use La Crosse altimeter setting and increase S-ILS 30 DA to 1064 and all visibilities 1/2 SM, increase all MDA 60 feet, and visibility S-LOC 30 Cat C/D 1/2 SM and Circling Cat B visibility 1/2 SM. For inop ALS, increase S-ILS 30 all Cats visibility to 1 1/2 SM, and S-LOC 30 Cats C/D visibility to 1 1/2 SM. For inop ALS when using La Crosse altimeter setting, increase S-ILS 30 all Cats visibility to 1 3/4 SM, and increase S-LOC 30 Cats C/D visibility to 1 3/4 SM.

MALSR

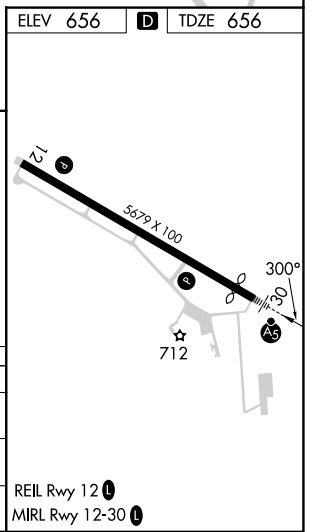
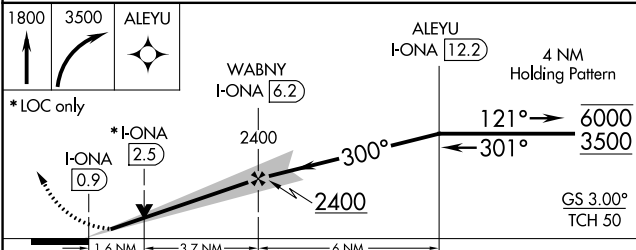
MISSED APPROACH:
Climb to 1800 then climbing right turn to 3500 direct ALEYU and hold.

AWOS-3 118.075	MINNEAPOLIS CENTER 128.6 363.0	UNICOM 122.8 (CTAF) 0
--------------------------	--	---------------------------------



NC-1, 05 SEP 2024 to 03 OCT 2024

NC-1, 05 SEP 2024 to 03 OCT 2024



CATEGORY	A	B	C	D
S-ILS 30	1053-3/4 397 (400-3/4)			
S-LOC 30	1220-1/2	564 (600-1/2)	1220-1 1/4	564 (600-1 1/4)
CIRCLING	1560-1 1/4 904 (1000-1 1/4)	1600-1 1/4 944 (1000-1 1/4)	1780-3 1124 (1200-3)	1980-3 1324 (1400-3)