

AIRPORT DIAGRAM

AL-5100 (FAA)

WASHINGTON DULLES INTL (IAD)
WASHINGTON, VIRGINIA

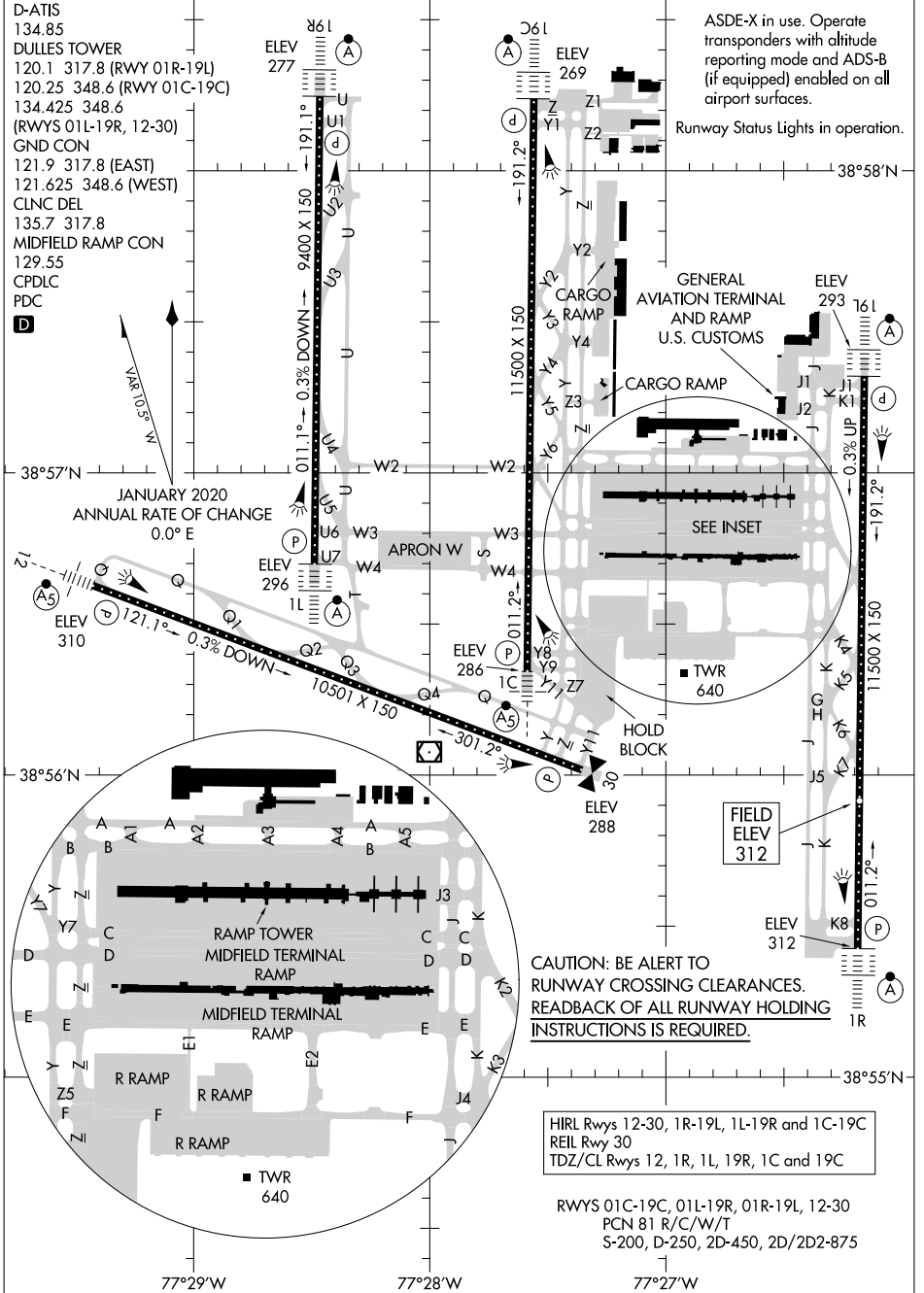
D-ATIS
134.85
DULLES TOWER
120.1 317.8 (RWY 01R-19L)
120.25 348.6 (RWY 01C-19C)
134.425 348.6
(RWYS 01L-19R, 12-30)
GND CON
121.9 317.8 (EAST)
121.625 348.6 (WEST)
CLNC DEL
135.7 317.8
MIDFIELD RAMP CON
129.55
CPDLC
PDC

D

ASDE-X in use. Operate transponders with altitude reporting mode and ADS-B (if equipped) enabled on all airport surfaces.
Runway Status Lights in operation.

NE-3, 05 SEP 2024 to 03 OCT 2024

NE-3, 05 SEP 2024 to 03 OCT 2024



AIRPORT DIAGRAM

WASHINGTON, VIRGINIA
WASHINGTON DULLES INTL (IAD)