

LOC/DME I-HSU <b>110.75</b> Chan <b>44 (Y)</b>	APP CRS <b>191°</b>	Rwy Idg TDZE Apt Elev	<b>9400</b> <b>278</b> <b>312</b>
--	------------------------	-----------------------------	---

# ILS RWY 19R (CAT II & III)

WASHINGTON DULLES INTL (IAD)

RNP APCH-GPS. From DUBBV.

DME or RADAR required. RADAR required for procedure entry at RUBNZ.

ALSF-2



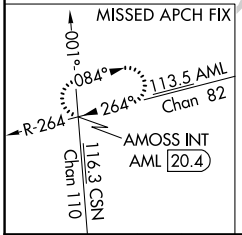
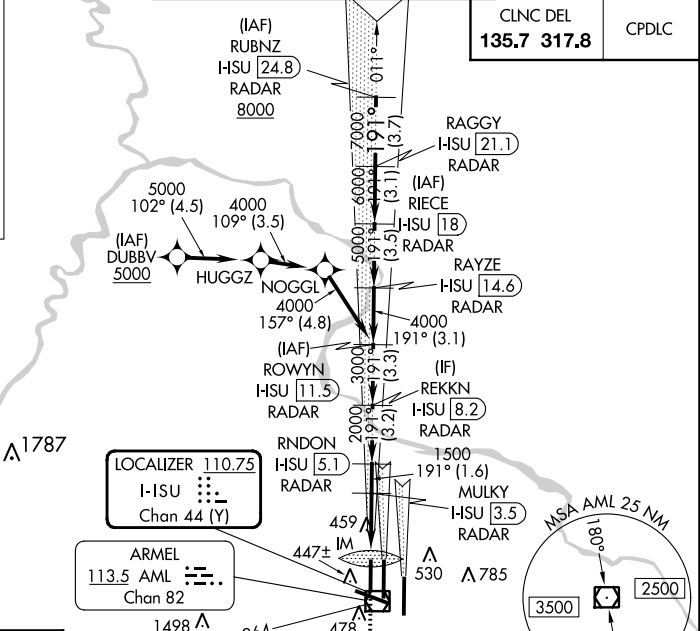
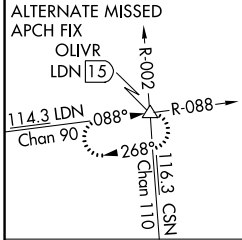
MISSED APPROACH: Climb to 800 then climbing right turn to 3000 on heading 280° and AML VOR/DME R-264 to AMOSS INT/AML 20.4 DME and hold.

Simultaneous approach authorized.

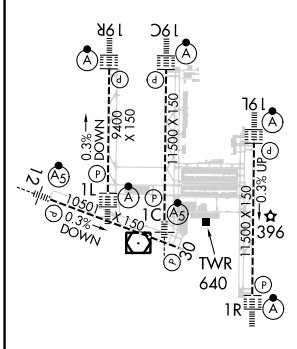
D-ATIS <b>134.85</b>	POTOMAC APP CON <b>120.45 306.925</b> (241°-330°) <b>128.525 306.925</b> (091°-240°) <b>126.1 338.25</b> (331°-090°)
-------------------------	---

DULLES TOWER	
<b>120.1 317.8</b> (Rwy 1R/19L)	<b>120.25 348.6</b> (Rwy 1C/19C)
<b>134.425 348.6</b> (Rwys 1L/19R and 12/30)	

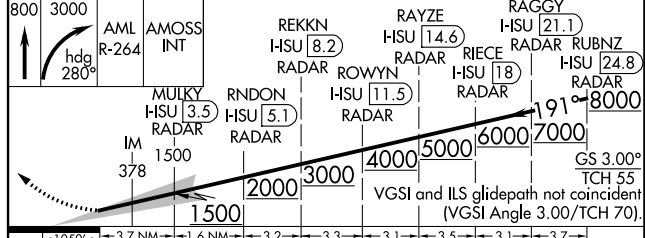
GND CON	
<b>121.9 317.8</b> (EAST)	<b>121.625 348.6</b> (WEST)



ELEV 312	<b>D</b>	TDZE 278
----------	----------	----------



TDZ/CL Rwys 1C, 1L, 1R, 12, 19C and 19R  
REIL Rwy 30  
HIRL all Rwys



CATEGORY	A	B	C	D
S-ILS 19R		CAT II RA 102/12 100 DA 378		
S-ILS 19R		CAT IIIa	RVR 07	
S-ILS 19R		CAT IIIb	RVR 06	
S-ILS 19R		CAT IIIc	NA	

## CATEGORY II & III ILS - SPECIAL AIRCREW & AIRCRAFT CERTIFICATION REQUIRED

NE-3, 05 SEP 2024 to 03 OCT 2024

NE-3, 05 SEP 2024 to 03 OCT 2024