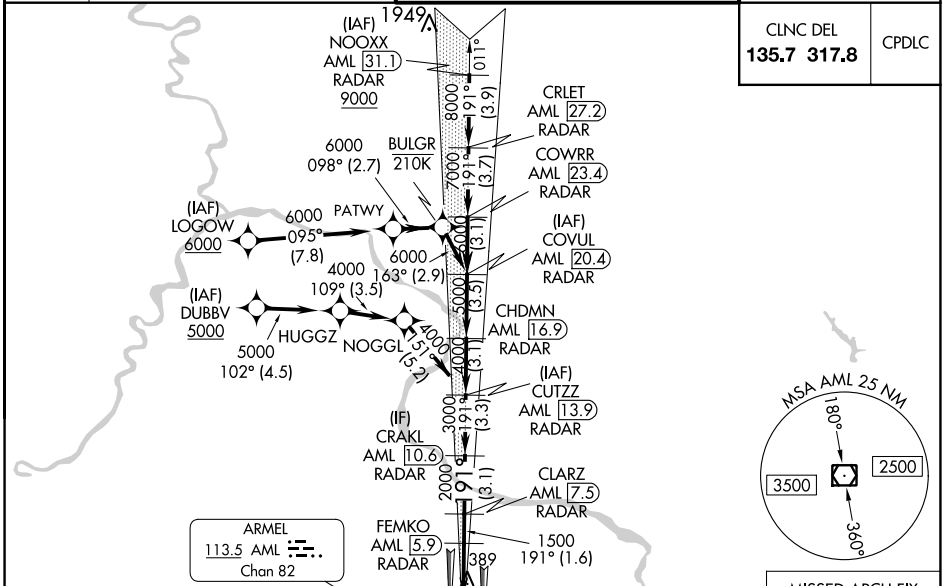


LOC I-DLX 111.3	APP CRS 191°	Rwy Idg 11089 TDZE 272 Apt Elev 312
---------------------------	------------------------	--

ILS or LOC RWY 19C

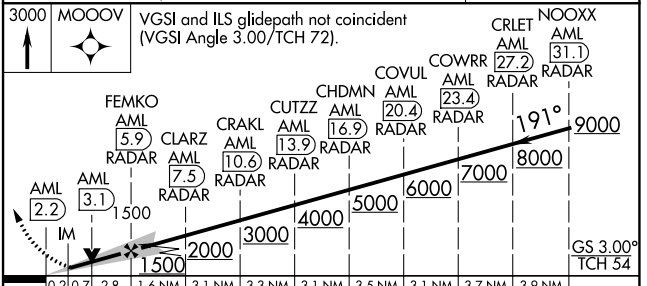
WASHINGTON DULLES INTL (IAD)

RNP APCH - GPS. RADAR required for procedure entry at NOOXX. DME or RADAR required.		ALSIF-2 	MISSED APPROACH: Climb to 3000 direct MOOOV and hold.
<p>⚠ Simultaneous approach authorized. DME from AML VOR/DME. DME use requires simultaneous reception of I-DLX and AML DME. ⚠ For inop ALS, increase S-LOC 19C Cat C and D visibility to RVR 5500.</p>			
D-ATIS 134.85	POTOMAC APP CON 120.45 306.925 (241°-330°) 128.525 306.925 (091°-240°) 126.1 338.25 (331°-090°)	DULLES TOWER 120.1 317.8 (Rwy 1R/19L) 120.25 348.6 (Rwy 1C/19C) 134.425 348.6 (Rwys 1L/19R and 12/30)	GND CON 121.9 317.8 (EAST) 121.625 348.6 (WEST)



CLNC DEL 135.7 317.8	CPDLC
--------------------------------	-------

ELEV 312	TDZE 272
----------	----------



REIL Rwy 30
HIRL all Rwys
TDZ/CL Rwys 1C, 1L, 1R,
12, 19C and 19R

FAF to MAP 3.7 NM					
Knots	60	90	120	150	180
Min:Sec	3:42	2:28	1:51	1:29	1:14

3000 MOOOV	VGSi and ILS glidepath not coincident (VGSi Angle 3.00/TCH 72).			
CRLET AML 27.2	NOOXX AML 31.1	RADAR		
FEMKO AML 5.9	CLARZ AML 7.5	CRAKL AML 10.6	CUTZZ AML 13.9	CHDMN AML 16.9
COVUL AML 20.4	COWRR AML 23.4	RADAR		
1500	2000	3000	4000	5000
6000	7000	8000	9000	
0.2 NM	0.7 NM	2.8 NM	1.6 NM	3.1 NM
3.3 NM	3.1 NM	3.5 NM	3.1 NM	3.7 NM
3.9 NM				
CATEGORY	A		B	
S-ILS 19C	472/18 200 (200-½)			
S-LOC 19C	640/24	368 (400-½)	640/35	368 (400-½)
CIRCLING	940-1	628 (700-1)	940-1¾	1180-2¾
			628 (700-1¾)	868 (900-2¾)

NE-3, 05 SEP 2024 to 03 OCT 2024

NE-3, 05 SEP 2024 to 03 OCT 2024