

APP CRS	Rwy Idg	11500
011°	TDZE	286
	Apt Elev	312

RNAV (RNP) Z RWY 1C

WASHINGTON DULLES INTL (IAD)

RNP AR APCH - GPS.

MALSR



MISSED APPROACH: Climb to 4000 direct CHDMN and hold, continue climb-in-hold to 4000.

For uncompensated Baro-VNAV systems, procedure NA below -13°C or above 54°C. Simultaneous approach authorized. For inop ALS, increase RNP 0.11 all Cats visibility to RVR 4000.

POTOMAC APP CON
120.45 306.925 (241°-330°)
128.525 306.925 (091°-240°)
126.1 338.25 (331°-090°)

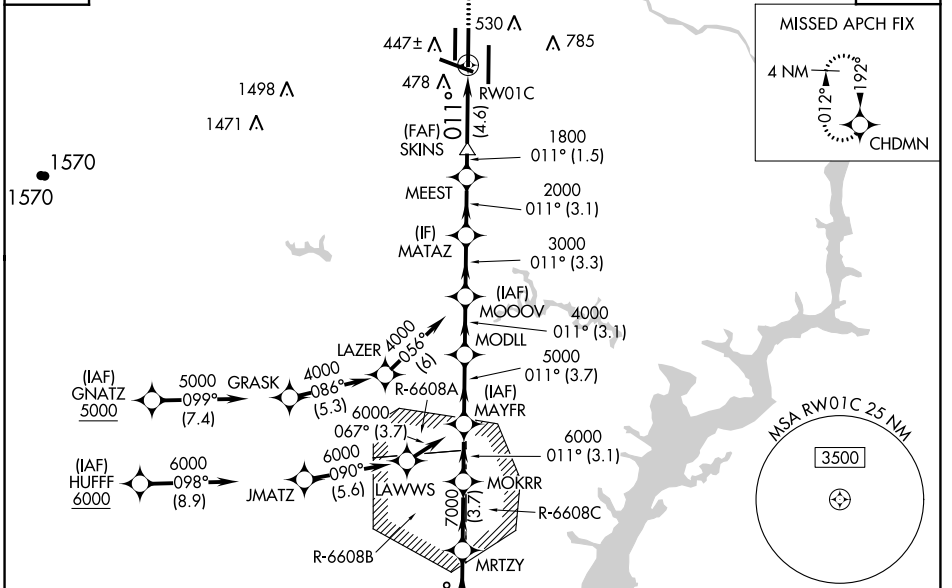
DULLES TOWER
120.1 317.8 (Rwy 1R/19L)
120.25 348.6 (Rwy 1C/19C)
134.425 348.6 (Rwys 1L/19R and 12/30)

GND CON
121.9 317.8 (EAST)
121.625 348.6 (WEST)

CLNC DEL
135.7 317.8

D-ATIS
134.85

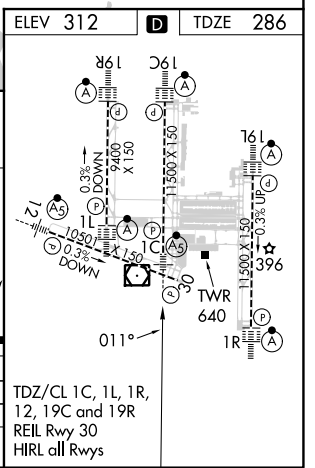
CPDLC



NE-3, 05 SEP 2024 to 03 OCT 2024

NE-3, 05 SEP 2024 to 03 OCT 2024

ELEV 312	D	TDZE 286
<p>MUDDO 9000 MRTZY 7000 MOKRR 6000 MAYFR 6000 MODLL 5000 MOOOV 4000 MATAZ 3000 MEEST 2000 SKINS 1800 RWY 1C 1800</p> <p>GP 3.00° TCH 54</p> <p>4000 CHDMN</p>		
<p>VGSI and RNAV glidepath not coincident (VGSI Angle 3.00/TCH 70).</p>		
<p>GP 3.00° TCH 54</p> <p>←4.9 NM→ 3.7 NM→ 3.1 NM→ 3.7 NM→ 3.1 NM→ 3.3 NM→ 3.1 NM→ 1.5 NM→ 4.6 NM→</p>		
CATEGORY	A	B
RNP 0.11 DA	540/24	254 (300-½)
RNP 0.30 DA	730/45	444 (500-¾)



AUTHORIZATION REQUIRED

TDZ/CL 1C, 1L, 1R,
12, 19C and 19R
REIL Rwy 30
HIRL all Rwys