

WAAS CH <b>40305</b> <b>W19B</b>	APP CRS <b>191°</b>	Rwy ldg <b>11089</b> TDZE <b>272</b> Apt Elev <b>312</b>
--	------------------------	--

# RNAV (GPS) Y RWY 19C

WASHINGTON DULLES INTL (IAD)

RNP APCH - GPS.

Simultaneous approach authorized. LNAV procedure NA during simultaneous operations.  
 Use of FD or AP required during simultaneous operations. For uncompensated Baro-VNAV systems, LNAV/VNAV NA below -13°C or above 54°C.

ALSIF-2

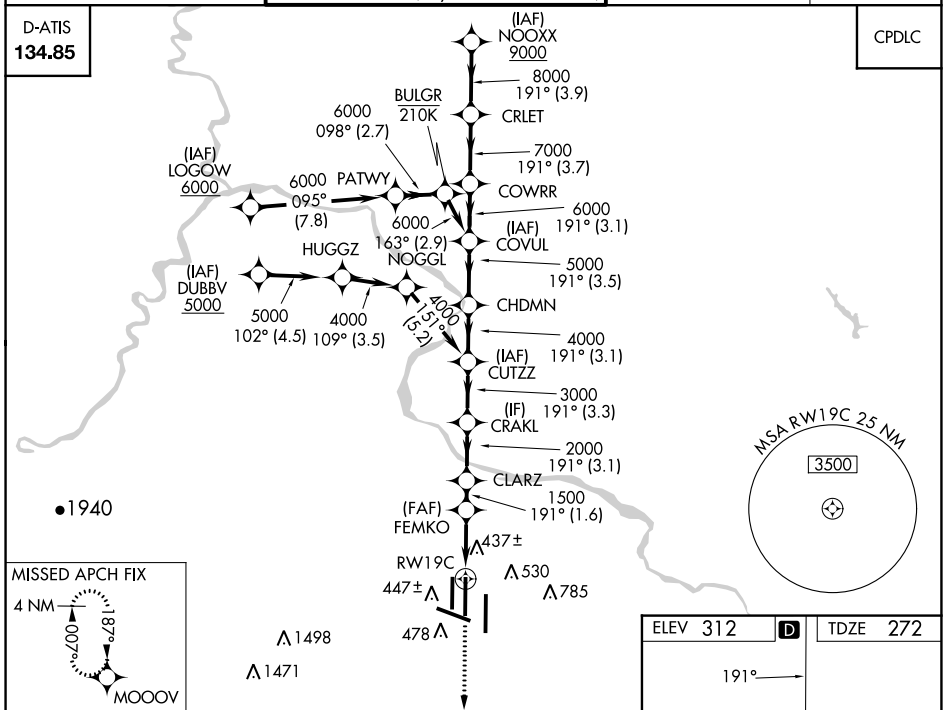


MISSED APPROACH:  
Climb to 3000 direct  
MOOOV and hold.

POTOMAC APP CON <b>120.45 306.925</b> (241°-330°) <b>128.525 306.925</b> (091°-240°) <b>126.1 338.25</b> (331°-090°)	DULLES TOWER <b>120.1 317.8</b> (Rwys 1R/19L) <b>120.25 348.6</b> (Rwys 1C/19C) <b>134.425 348.6</b> (Rwys 1L/19R and 12/30)	GND CON <b>121.9 317.8</b> (EAST) <b>121.625 348.6</b> (WEST)	CLNC DEL <b>135.7 317.8</b>
---	---	---	--------------------------------

D-ATIS  
**134.85**

CPDLC



NE-3, 05 SEP 2024 to 03 OCT 2024

NE-3, 05 SEP 2024 to 03 OCT 2024

3000 MOOOV	VGSI and RNAV glidepath not coincident (VGSI Angle 3.00/TCH 72).				NOOXX
↑	1.1 NM	2.6 NM	1.6 NM	3.1 NM	3.9 NM
	FEMKO	CLARZ	CRAKL	CUTZZ	CHDMN
	1500	2000	3000	4000	5000
	1.1	2.6	1.6	3.1	3.9
CATEGORY	A		B		D
LPV DA	472/18		200 (200-1/2)		
LNAV/VNAV DA	700/40		428 (400-3/4)		
LNAV MDA	700/24		428 (400-1/2)		
CIRCLING	940-1 628 (700-1)		940-1 3/4 628 (700-1 3/4)		1180-2 3/4 868 (900-2 3/4)

