

WAAS CH <b>86709</b> <b>W19D</b>	APP CRS <b>191°</b>	Rwy Idg TDZE <b>278</b> Apt Elev <b>312</b>	<b>9400</b>
--	------------------------	---	-------------

# RNAV (GPS) Y RWY 19R

WASHINGTON DULLES INTL (IAD)

RNP APCH - GPS.

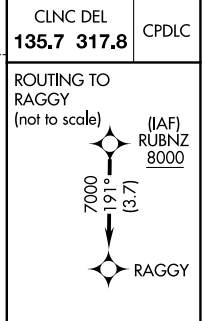
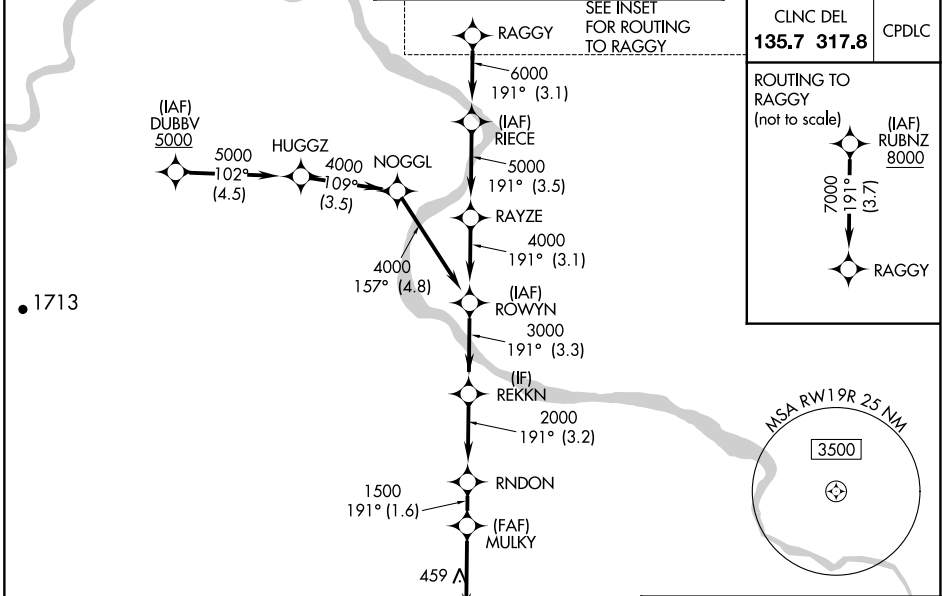
For uncompensated Baro-VNAV systems, LNAV/VNAV NA below -13°C or above 54°C. Simultaneous approach authorized. LNAV procedure NA during simultaneous operations. Use of FD or AP required during simultaneous operations.

ALSf-2

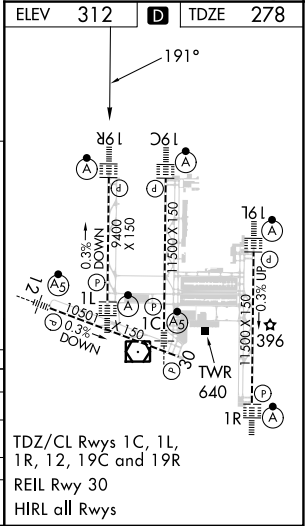


MISSED APPROACH: Climb to 800 then climbing right turn to 3000 direct AMOSS and hold.

D-ATIS <b>134.85</b>	POTOMAC APP CON <b>120.45 306.925</b> (241°-330°) <b>128.525 306.925</b> (091°-240°) <b>126.1 338.25</b> (331°-090°)	DULLES TOWER <b>120.1 317.8</b> (Rwy 1R/19L) <b>120.25 348.6</b> (Rwy 1C/19C) <b>134.425 348.6</b> (Rwy 1L/19R and 12/30)	GND CON <b>121.9 317.8</b> (EAST) <b>121.625 348.6</b> (WEST)
-------------------------	---	--	---



800	3000	AMOSS	VGSi and RNAV glidepath not coincident (VGSi Angle 3.00/TCH 70).				RUBNZ	8000
MULKY	MULKY	MULKY	RNDON	RAYZE	RIECE	RAGGY	8000	
1.2 NM to RWY19R	1.500	1500	2000	3000	4000	5000	6000	
1.2	2.5	1.6 NM	3.2 NM	3.3 NM	3.1 NM	3.5 NM	3.1 NM	
1.2	2.5	1.6 NM	3.2 NM	3.3 NM	3.1 NM	3.5 NM	3.1 NM	



CATEGORY	A	B	C	D
LPV DA	478/18		200 (200-1/2)	
LNAV/VNAV DA	708/40		430 (400-3/4)	
LNAV MDA	720/24	442 (500-1/2)	720/45	442 (500-3/4)
CIRCLING	940-1	628 (700-1)	940-1 3/4 628 (700-1 3/4)	1180-2 3/4 868 (900-2 3/4)

NE-3, 05 SEP 2024 to 03 OCT 2024

NE-3, 05 SEP 2024 to 03 OCT 2024