

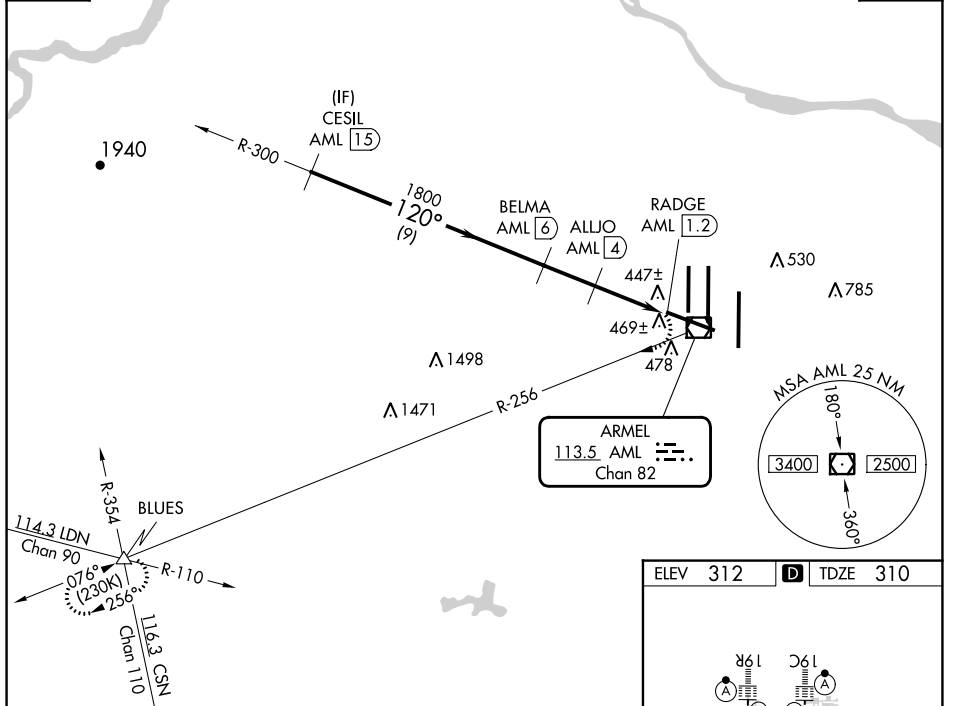
VOR/DME AML <b>113.5</b> Chan <b>82</b>	APP CRS <b>120°</b>	Rwy Idg TDZE Apt Elev	<b>10501</b> <b>310</b> <b>312</b>
---	------------------------	-----------------------------	--

# VOR/DME RWY 12

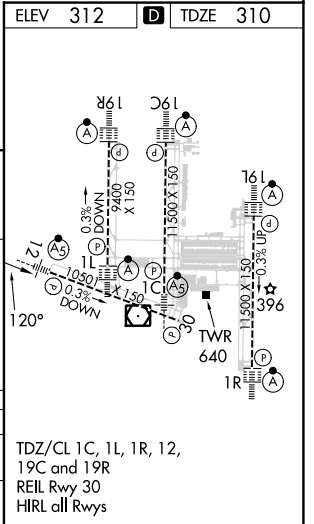
WASHINGTON DULLES INTL (IAD)

<p>POTOMAC APP CON <b>120.45 306.925</b> (241°-330°) <b>128.525 306.925</b> (091°-240°) <b>126.1 338.25</b> (331°-090°)</p>	<p>DULLES TOWER <b>120.1 317.8</b> (Rwy 1R/19L) <b>120.25 348.6</b> (Rwy 1C/19C) <b>134.425 348.6</b> (Rwys 1L/19R and 12/30)</p>	<p>GND CON <b>121.9 317.8</b> (EAST) <b>121.625 348.6</b> (WEST)</p>	<p>CLNC DEL <b>135.7 317.8</b></p>

D-ATIS <b>134.85</b>	<h2>RADAR REQUIRED</h2>	CPDLC
-------------------------	-------------------------	-------



	CESIL AML 15		BELMA AML 6		ALLJO AML 4		RADGE AML 1.2		4000	AML R-256	BLUES
	120°		120°		120°		120°				
	9 NM		2 NM		1.7 NM		1.2				
CATEGORY	A	B	C	D							
S-12	740/24	430 (500-½)	740/40	430 (500-¾)							
CIRCLING	940-1	628 (700-1)	940-1¾ 628 (700-1¾)	1180-2¾ 868 (900-2¾)							



NE-3, 05 SEP 2024 to 03 OCT 2024

NE-3, 05 SEP 2024 to 03 OCT 2024