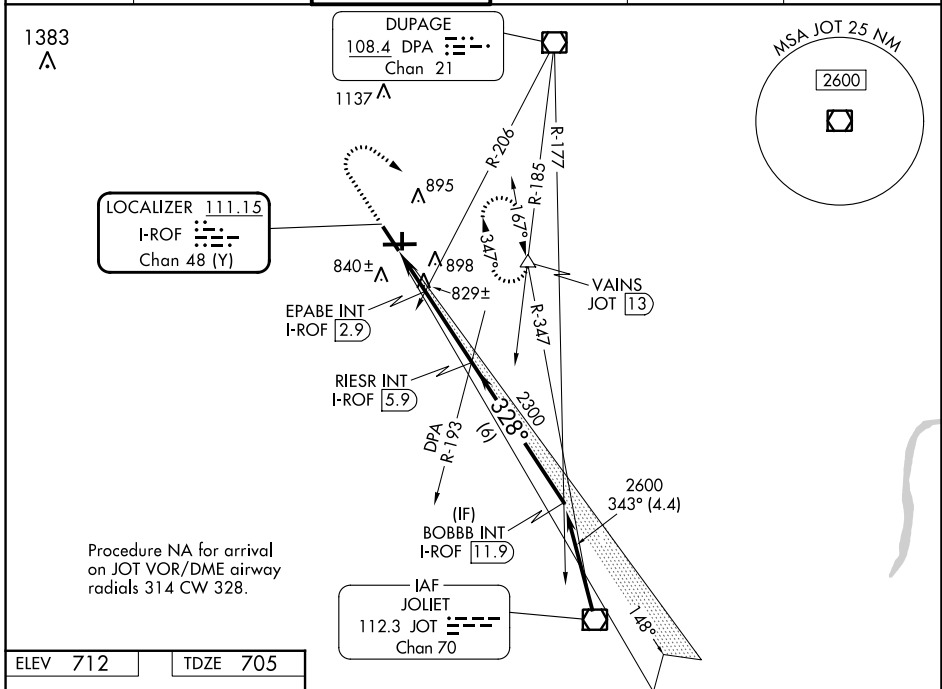


LOC/DME I-ROF <b>111.15</b> Chan <b>48 (Y)</b>	APP CRS <b>328°</b>	Rwy Idg TDZE Apt Elev	<b>5503</b> <b>705</b> <b>712</b>
--	------------------------	-----------------------------	---

# LOC RWY 33

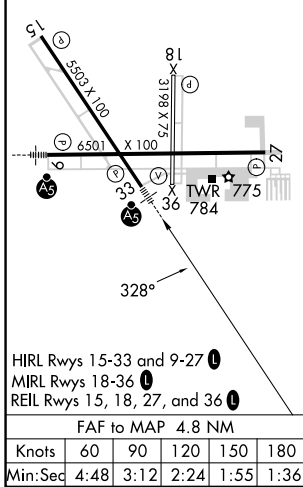
AURORA MUNI (A.R.R.)

<p><b>▽</b> For inop ALS, increase S-LOC 33 Cats C and D visibility to 1 3/4 SM and EPABE FIX minimums S-LOC 33 Cats C and D visibility to 1 SM.</p>	<p><b>MALSR</b> </p> <p><b>MISSED APPROACH:</b> Climb to 1400 then climbing right turn to 3000 on heading 146° and JOT VOR/DME R-347 to VAINS INT/JOT 13 DME and hold, continue climb-in-hold to 3000.</p>				
<p><b>ATIS</b> <b>125.85</b></p>	<p><b>CHICAGO APP CON</b> <b>133.5 349.0</b></p>	<p><b>AURORA TOWER*</b> <b>120.6 (CTAF) 0</b></p>	<p><b>GND CON</b> <b>121.7</b></p>	<p><b>CLNC DEL</b> <b>121.7</b> (When tower closed)</p>	<p><b>UNICOM</b> <b>122.95 123.5</b></p>



Procedure NA for arrival on JOT VOR/DME airway radials 314 CW 328.

ELEV 712	TDZE 705
----------	----------



1400	3000	JOT R-347	VAINS	RIESR INT I-ROF 5.9	BOBBB INT I-ROF 11.9
hdg 146°		<p>EPABE INT I-ROF 2.9</p> <p>I-ROF 1.1 I-ROF 2.1</p> <p>328°</p> <p>2600</p> <p>2300</p> <p>3.04°</p> <p>TCH 48</p> <p>1320</p>			
1 NM		0.8 NM		3 NM	
6 NM					
CATEGORY	A	B	C	D	
S-LOC 33	1320-1/2	615 (700-1/2)	1320-1 3/8	615 (700-1 3/8)	
<b>C</b> CIRCLING	1320-1	608 (700-1)	1320-1 3/4	608 (700-1 3/4)	1320-2
EPABE FIX MINIMUMS (DUAL VOR RECEIVERS or DME REQUIRED)					
S-LOC 33	1080-1/2	375 (400-1/2)	1080-5/8	375 (400-5/8)	
<b>C</b> CIRCLING	1200-1	488 (500-1)	1300-1 1/2	588 (600-1 1/2)	1320-2
			608 (700-2)		

EC-3, 05 SEP 2024 to 03 OCT 2024

EC-3, 05 SEP 2024 to 03 OCT 2024