

APP CRS <b>345°</b>	Rwy Idg TDZE Apt Elev	<b>3999</b> <b>667</b> <b>697</b>
------------------------	-----------------------------	---

# RNAV (GPS) RWY 34

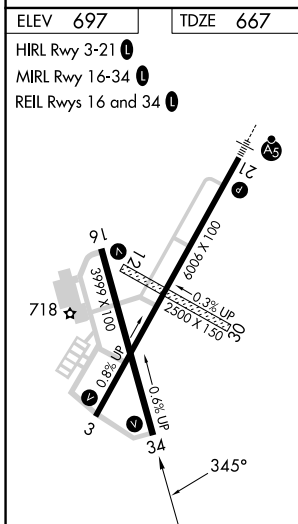
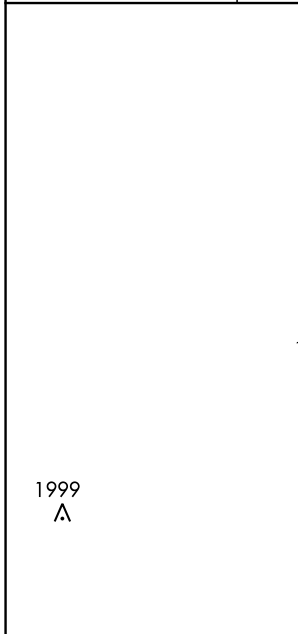
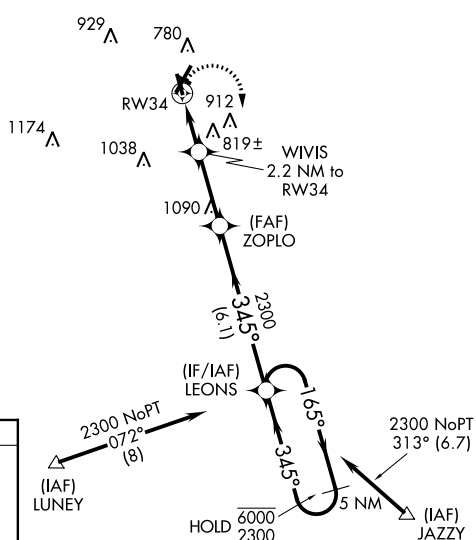
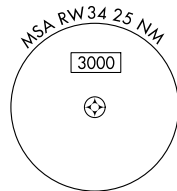
VERMILION RGNL (DNTV)

RNP APCH - GPS.

**▼** Circling NA to Rwy 12 and 30.  
**▲** Rwy 34 helicopter visibility reduction below 3/4 SM NA.

MISSED APPROACH: Climbing right turn to 2300 direct LEONS and hold.

AWOS-3 <b>119.275</b>	CHAMPAIGN APP CON * <b>121.35 285.65</b>	CLNC DEL <b>121.7</b>	UNICOM <b>122.7 (CTAF)</b>
--------------------------	---	--------------------------	-------------------------------



2300	LEONS	VGSI and descent angles not coincident (VGSI Angle 3.00/TCH 14).		
2300	ZOPLO	LEONS	5 NM Holding Pattern	
1400	WIVIS 2.2 NM to RW34	3.05° TCH 40		
2300	2300	6000	2300	
2.2 NM	2.8 NM	6.1 NM		
CATEGORY	A	B	C	D
LNAV MDA	1080-1	413 (400-1)	1080-1 1/4	413 (400-1 1/4)
CIRCLING	1160-1	463 (500-1)	1240-1 1/2	1340-2
			543 (600-1 1/2)	643 (700-2)

EC-3, 05 SEP 2024 to 03 OCT 2024

EC-3, 05 SEP 2024 to 03 OCT 2024