

APP CRS <b>274°</b>	Rwy ldg TDZE Apt Elev	<b>4000</b> <b>823</b> <b>824</b>
------------------------	-----------------------------	---

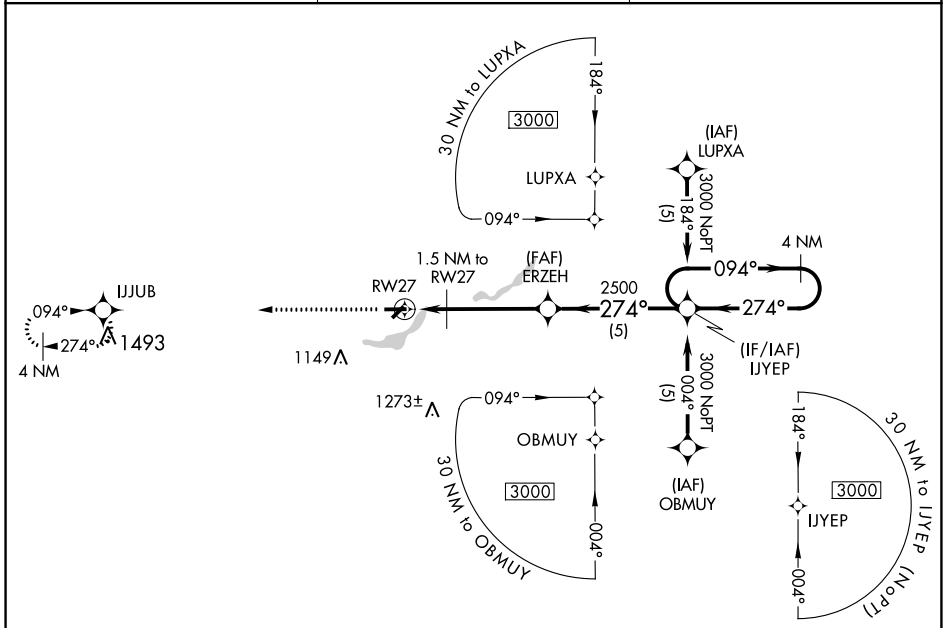
# RNAV (GPS) RWY 27

THREE RIVERS MUNI/DR HAINES (HAI)

**⚠** DME/DME RNP-0.3 NA. When local altimeter setting not received, use South Bend altimeter setting and increase all MDA 100 feet; increase LNAV Cat C visibility 1/8 mile and increase Circling Cat C visibility 1/2 mile. Procedure NA at night. Helicopter visibility reduction below 1 SM NA.

**⚠** MISSED APPROACH: Climb to 3000 direct IJJUB WP and hold.

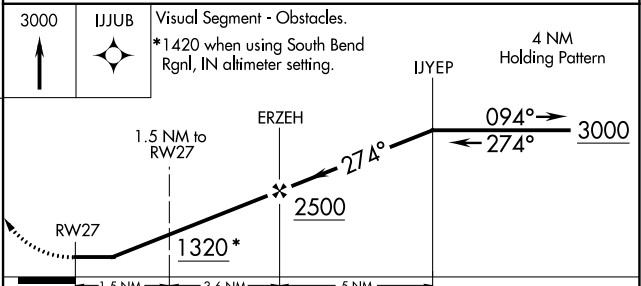
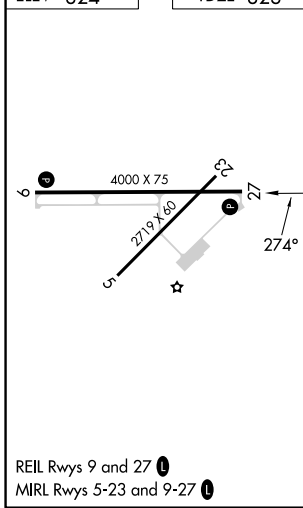
AWOS-3 <b>119.975</b>	GREAT LAKES APP CON ★ <b>121.2 239.25</b>	UNICOM <b>122.8 (CTAF) 0</b>
--------------------------	--	---------------------------------



EC-1, 05 SEP 2024 to 03 OCT 2024

EC-1, 05 SEP 2024 to 03 OCT 2024

ELEV <b>824</b>	TDZE <b>823</b>
-----------------	-----------------



CATEGORY	A	B	C	D
LNAV MDA	1200-1	377 (400-1)	1200-1¼ 377 (400-1¼)	NA
<b>C</b> CIRCLING	1320-1 496 (500-1)	1420-1 596 (600-1)	1560-2 736 (800-2)	NA