

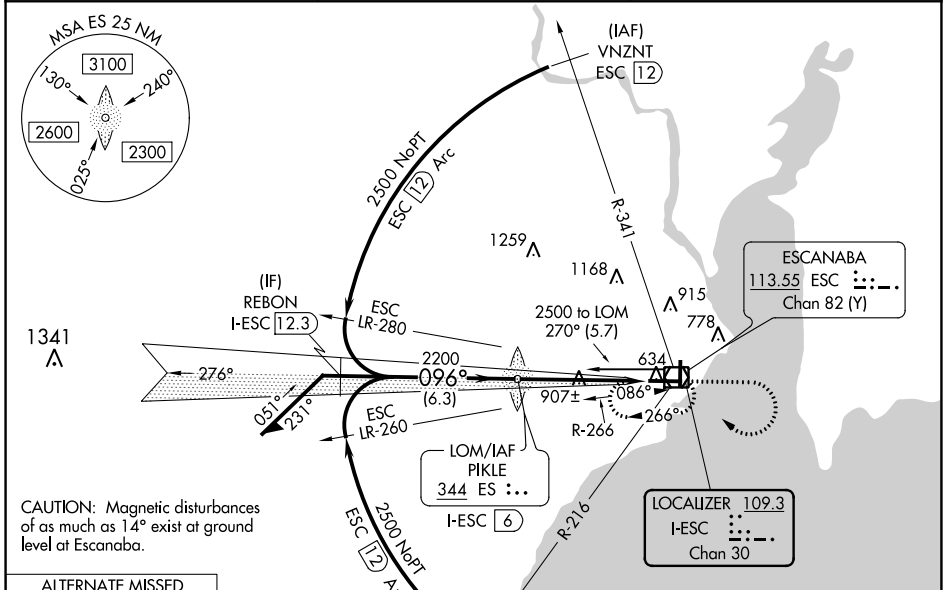
LOC/DME I-ESC 109.3 Chan 30	APP CRS 096°	Rwy ldg 6498 TDZE 609 Apt Elev 609
--	------------------------	---

ILS or LOC RWY 10

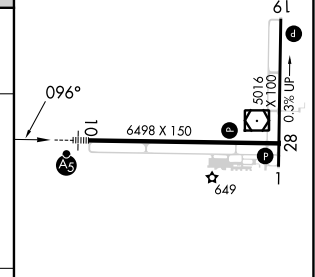
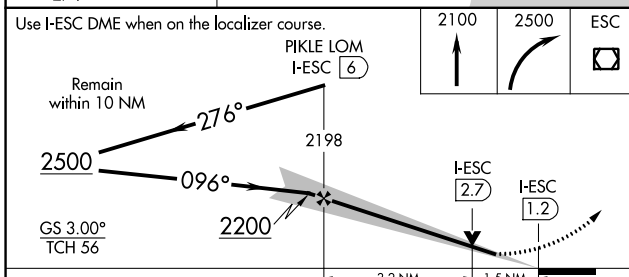
DELTA COUNTY (ESC)

ADF or DME required for procedure entry. ADF or DME required for LOC only.		MALSR 	MISSED APPROACH: Climb to 2100 then climbing right turn to 2500 direct ESC VOR/DME and hold.
--	--	-----------	---

AWOS-3PT 121.425	MINNEAPOLIS CENTER 127.65	UNICOM 122.8 (CTAF)
----------------------------	-------------------------------------	-------------------------------



ELEV 609	TDZE 609
----------	----------



CATEGORY	A	B	C	D	HIRL Rwy 10-28
S-ILS 10		809-1/2	200 (200-1/2)		MIRL Rwy 1-19
S-LOC 10	1160-1/2	551 (600-1/2)	1160-1 1/8	551 (600-1 1/8)	REIL Rws 1 and 28
CIRCLING	1160-1	551 (600-1)	1280-2 671 (700-2)	1480-2 3/4 871 (900-2 3/4)	FAF to MAP 4.8 NM
					Knots 60 90 120 150 180
					Min:Sec 4:48 3:12 2:24 1:55 1:36

EC-1, 05 SEP 2024 to 03 OCT 2024

EC-1, 05 SEP 2024 to 03 OCT 2024