

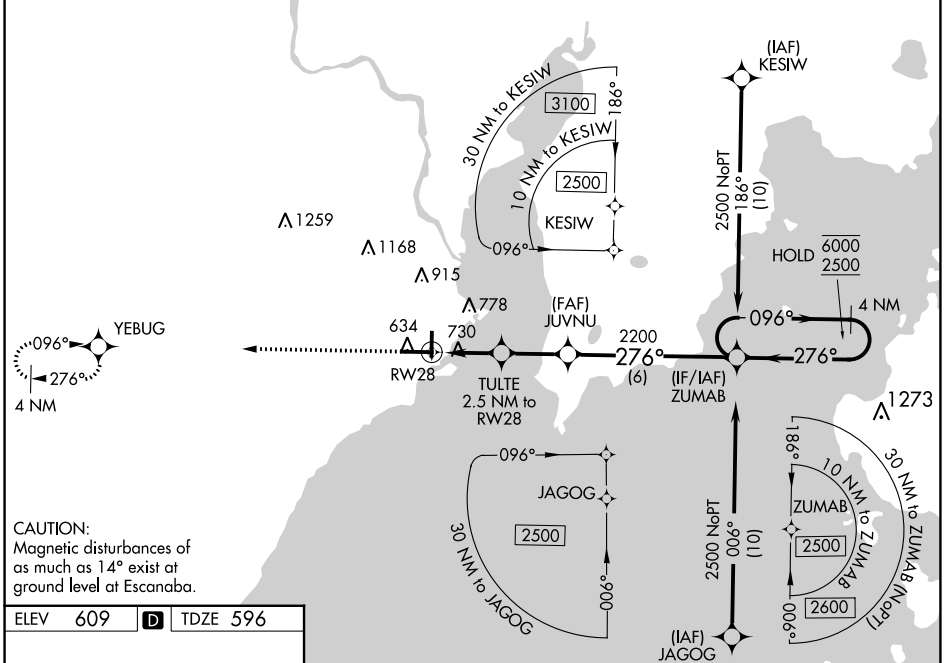
WAAS CH 63128 W28A	APP CRS 276°	Rwy Idg TDZE Apt Elev	6498 596 609
--	------------------------	-----------------------------	---

RNAV (GPS) RWY 28

DELTA COUNTY (E/SC)

RNP APCH - GPS.	MISSED APPROACH: Climb to 2500 direct YEBUG and hold.
<p>⚠ Rwy 28 helicopter visibility reduction below 3/4 SM NA. For uncompensated Baro-VNAV systems, LNAV/VNAV NA below -16°C or above 54°C.</p>	

AWOS-3PT 121.425	MINNEAPOLIS CENTER 127.65	UNICOM 122.8 (CTAF) 0
----------------------------	-------------------------------------	---------------------------------

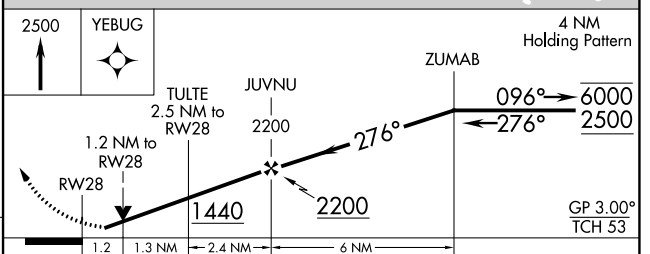
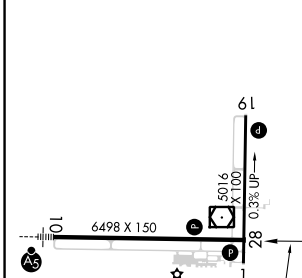


EC-1, 05 SEP 2024 to 03 OCT 2024

EC-1, 05 SEP 2024 to 03 OCT 2024

CAUTION:
Magnetic disturbances of
as much as 14° exist at
ground level at Escanaba.

ELEV 609	D	TDZE 596
----------	----------	----------



CATEGORY	A	B	C	D
LPV DA	846-1		250 (300-1)	
LNAV/VNAV DA	1076-1 5/8		480 (500-1 5/8)	
LNAV MDA	1040-1	444 (500-1)	1040-1 3/8	444 (500-1 3/8)
C CIRCLING	1060-1 451 (500-1)	1080-1 471 (500-1)	1280-2 671 (700-2)	1480-2 3/4 871 (900-2 3/4)

HIRL Rwy 10-28 **0**
MIRL Rwy 1-19 **0**
REIL Rwy 1 and 28 **0**