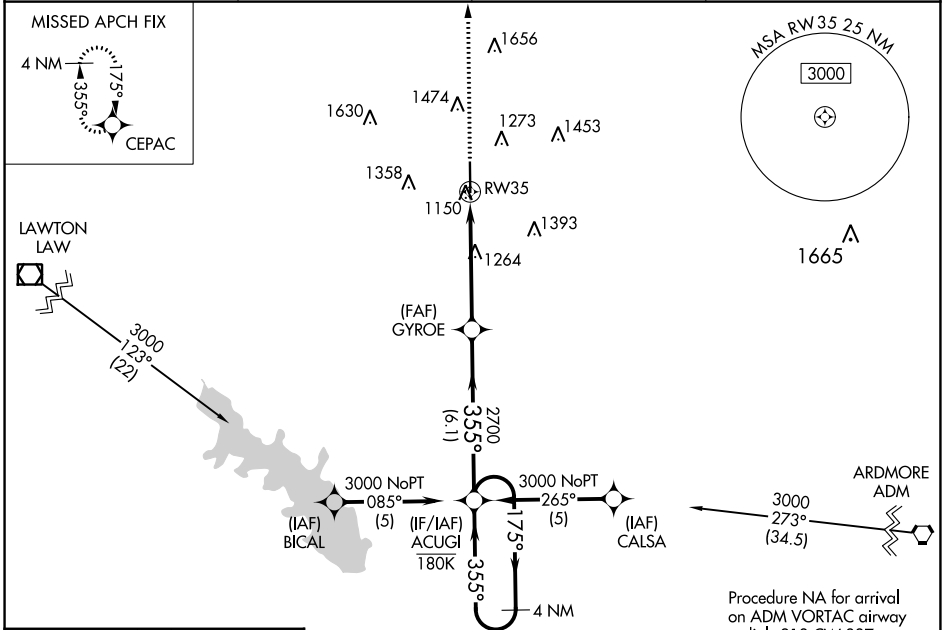


WAAS CH 40241 W35A	APP CRS 355°	Rwy Idg TDZE Apt Elev	6325 1094 1114
--	------------------------	-----------------------------	---

RNAV (GPS) RWY 35

HALLIBURTON FLD (DUC)

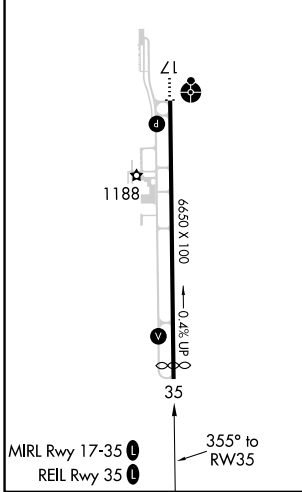
RNP APCH. ▼ For uncompensated Baro-VNAV systems, LNAV/VNAV NA below -17°C or above 54°C.		MISSED APPROACH: Climb to 3000 direct CEPAC and hold.	
AWOS-3 119.075	FORT SILL APP CON 118.6 290.375	CLNC DEL 118.4	UNICOM 122.8 (CTAF)



SC-1, 05 SEP 2024 to 03 OCT 2024

SC-1, 05 SEP 2024 to 03 OCT 2024

ELEV 1114	D	TDZE 1094
-----------	----------	-----------



3000	CEPAC	ACUGI	4 NM Holding Pattern
*LNAV only.		GYROE	175° → 3000
RW35	*1.2 NM to RW35	2700	← 355°
1.2 NM	3.7 NM	6.1 NM	GP 3.00° TCH 42
CATEGORY	A	B	C
LPV DA		1294-3/4	200 (200-3/4)
LNAV/VNAV DA		1397-7/8	303 (300-7/8)
LNAV MDA	1520-1	426 (500-1)	1520-1 1/4 426 (500-1 1/4)
CIRCLING	1560-1 446 (500-1)	1580-1 466 (500-1)	1780-1 3/4 666 (700-1 3/4) 1780-2 666 (700-2)