

WAAS CH <b>86404</b> <b>W31A</b>	APP CRS <b>315°</b>	Rwy Idg TDZE <b>238</b> Apt Elev <b>238</b>
--	------------------------	---

# RNAV (GPS) RWY 31

HESLER-NOBLE FLD (LUL)

RNP APCH.

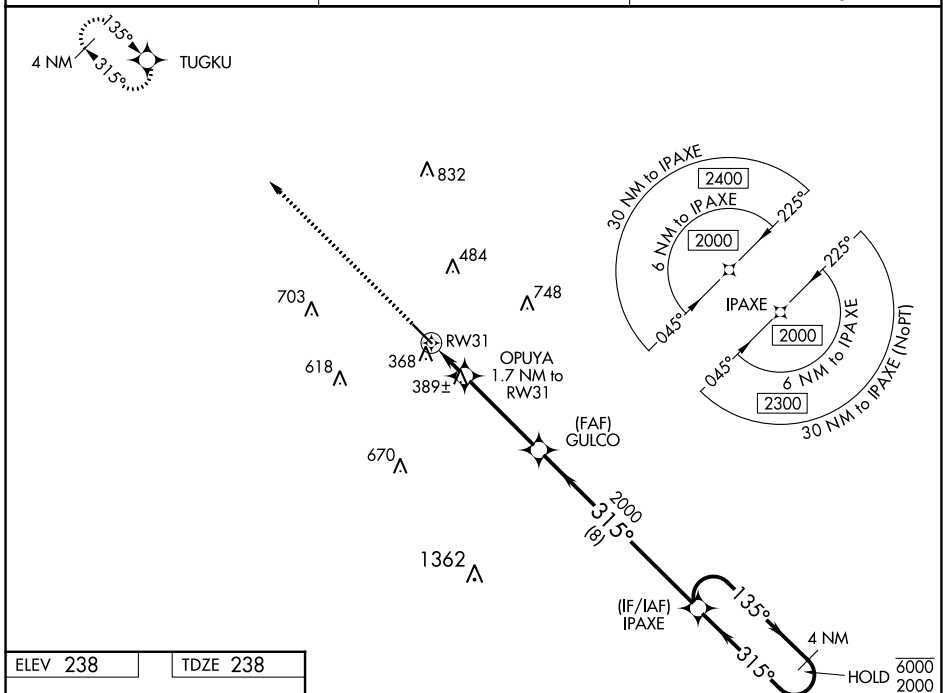
**▼** Rwy 31 helicopter visibility reduction below 3/4 SM NA.  
**▲** For uncompensated Baro-VNAV systems, LNAV/VNAV NA below -15°C or above 54°C.

MISSED APPROACH: Climb to 2000 direct TUGKU and hold.

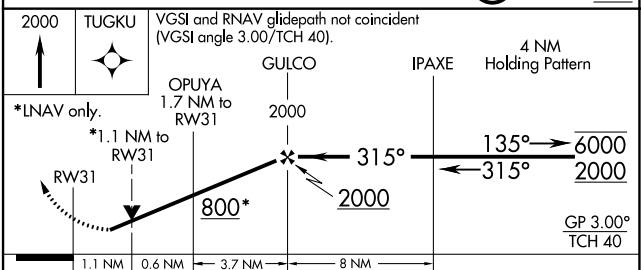
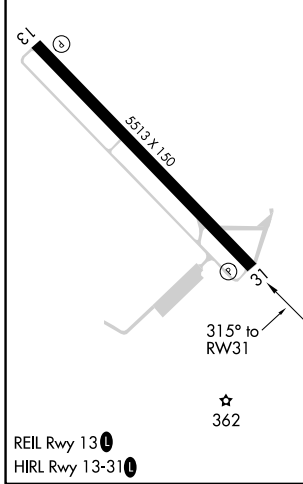
AWOS-3PT  
**119.275**

HOUSTON CENTER  
**126.8 327.8**

UNICOM  
**123.05 (CTAF) 0**



ELEV 238	TDZE 238
----------	----------



CATEGORY	A	B	C	D
LPV DA	524-1		286 (300-1)	
LNAV/ VNAV DA	554-1		316 (400-1)	
LNAV MDA	640-1 402 (500-1)		640-1 3/8 402 (500-1 3/8)	
<b>C</b> CIRCLING	700-1 462 (500-1)	800-1 562 (600-1)	1040-2 1/4 802 (900-2 1/4)	1060-2 3/4 822 (900-2 3/4)

SC-4, 05 SEP 2024 to 03 OCT 2024

SC-4, 05 SEP 2024 to 03 OCT 2024