

WAAS CH 82512 W05A	APP CRS 054°	Rwy Idg TDZE 439 Apt Elev 439	6051
--	------------------------	---	-------------

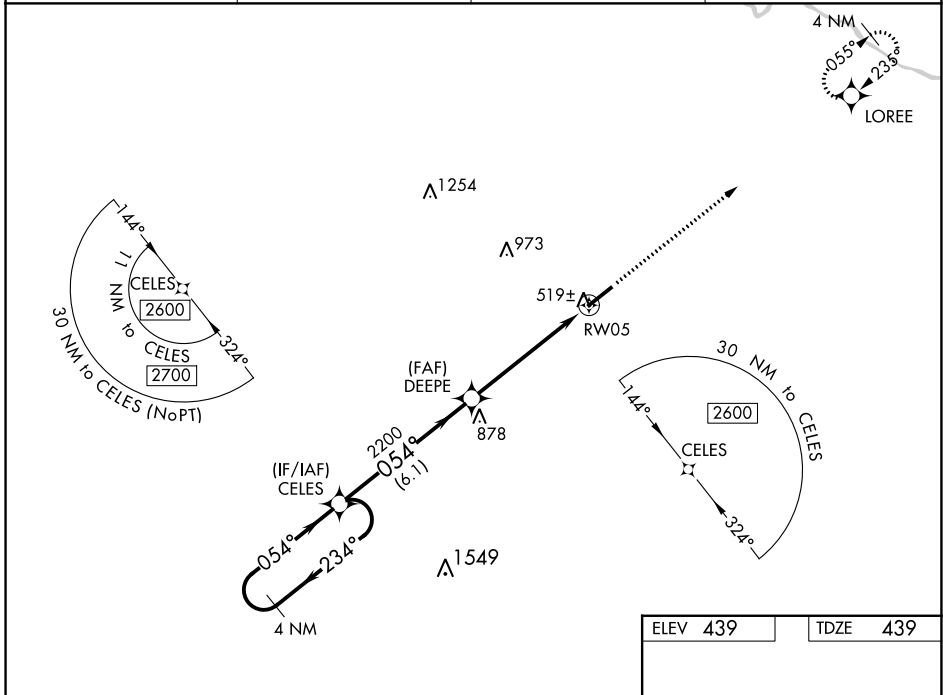
RNAV (GPS) RWY 5

MADISONVILLE RGNL (2I0)

⚠ For uncompensated Baro-VNAV systems, LNAV/VNAV NA below -15°C (5°F) or above 54°C (130°F). Baro-VNAV and VDP NA when using Evansville altimeter setting. Rwy 05 helicopter visibility reduction below 3/4 SM NA. DME/DME RNP-0.3 NA. When local altimeter setting not received, use Evansville altimeter setting and increase LPV DA to 788 feet, LNAV/VNAV DA to 817 feet and all visibilities 3/8 SM. Increase all MDA 100 feet and LNAV Cat C/D and Circling Cat C visibility 1/4 SM.

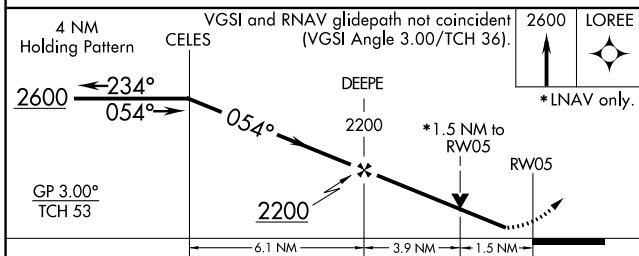
MISSED APPROACH:
Climb to 2600 direct LOREE and hold.

AWOS-3 126.475	EVANSVILLE APP CON ★ 124.025 290.9	CLNC DEL 120.1	UNICOM 122.7 (CTAF) 0
--------------------------	--	--------------------------	---------------------------------



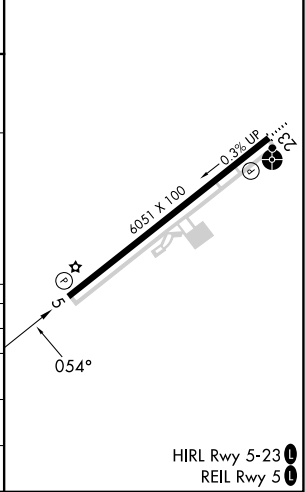
SE-1, 05 SEP 2024 to 03 OCT 2024

SE-1, 05 SEP 2024 to 03 OCT 2024



ELEV 439	TDZE 439
----------	----------

CATEGORY	A	B	C	D
LPV DA		689-3/4	250 (300-3/4)	
LNAV/VNAV DA		718-7/8	279 (300-7/8)	
LNAV MDA	960-1	521 (600-1)	960-1 1/2	521 (600-1 1/2)
C CIRCLING	960-1	521 (600-1)	960-1 1/2 521 (600-1 1/2)	1340-3 901 (1000-3)



HIRL Rwy 5-23 0
REIL Rwy 5 0