

# KINGDOM FOUR DEPARTURE

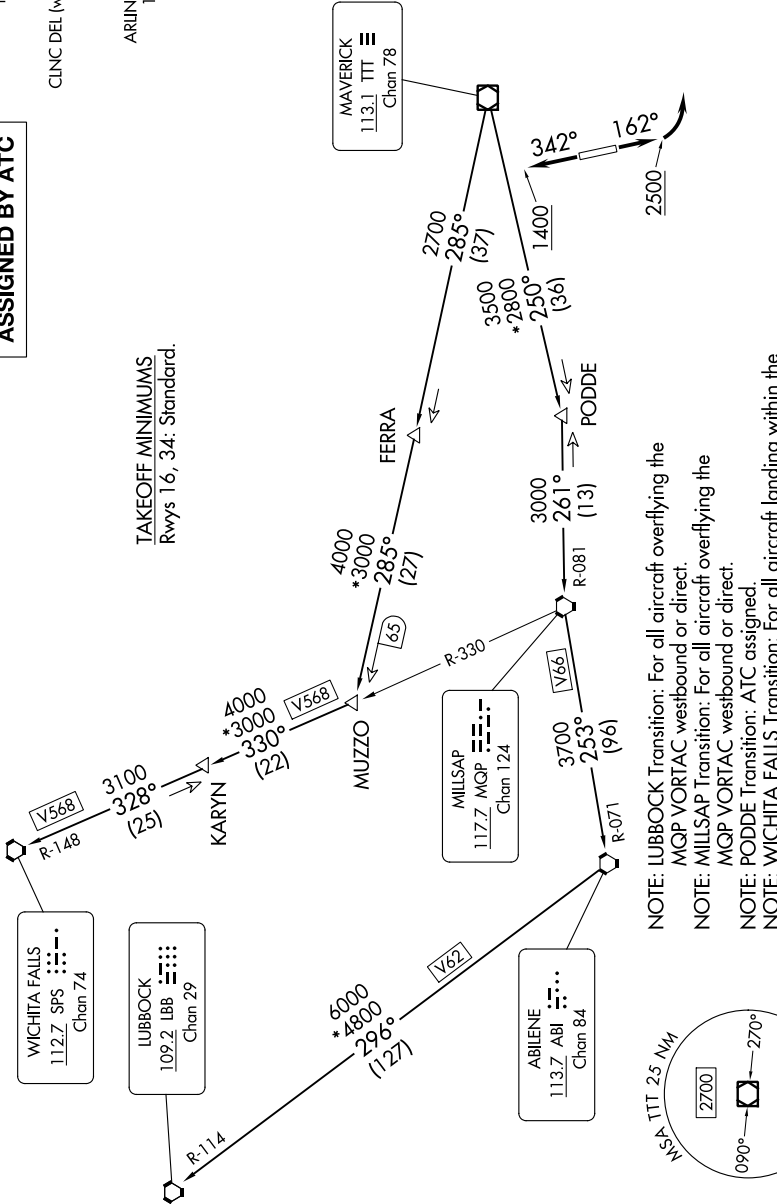
SC-2, 05 SEP 2024 to 03 OCT 2024

RADAR and DME required.

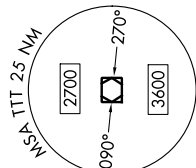
**TOP ALTITUDE:  
ASSIGNED BY ATC**

REGIONAL DEP CON  
135.975 379.9  
CLNC DEL  
121.875  
CLNC DEL (when hwr closed)  
118.85  
GND CON  
121.875  
ARLINGTON TOWER \*  
128.625 (CTAF)

**TAKEOFF MINIMUMS**  
Rwys 16, 34: Standard.



- NOTE: LUBBOCK Transition: For all aircraft overlying the MQP VORTAC westbound or direct.
- NOTE: MILLSAP Transition: For all aircraft overlying the MQP VORTAC westbound or direct.
- NOTE: PODDE Transition: ATC assigned.
- NOTE: WICHITA FALLS Transition: For all aircraft landing within the Wichita Falls terminal area or overlying the SPS VORTAC.
- NOTE: For all aircraft requesting 17000 and below.



NOTE: Chart not to scale.

(CONTINUED ON FOLLOWING PAGE)

# KINGDOM FOUR DEPARTURE

SC-2, 05 SEP 2024 to 03 OCT 2024