

(NANDR2.NANDR) 23110

AL-5189 (FAA)

ARLINGTON MUNI (GKY)

# NANDR TWO DEPARTURE (RNAV)

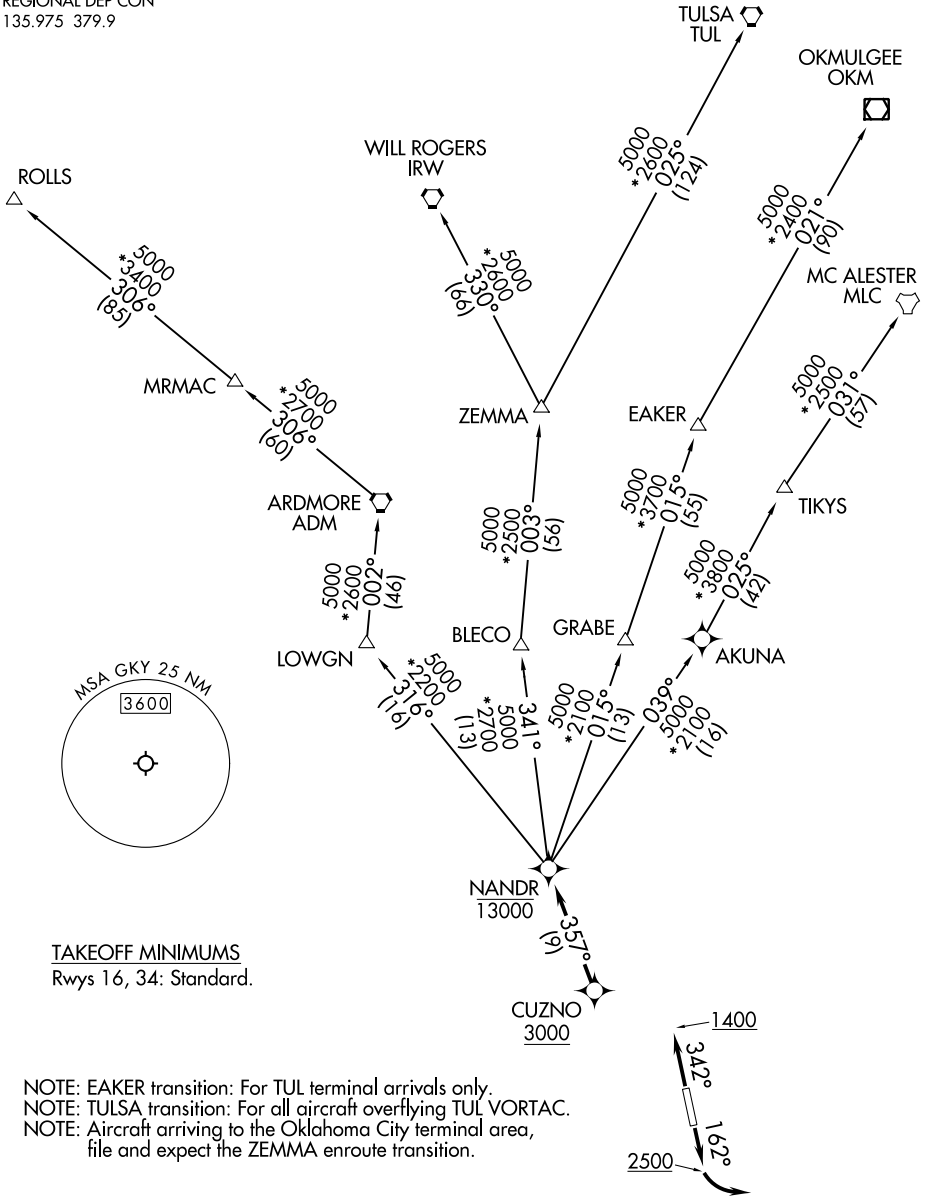
ARLINGTON, TEXAS

CLNC DEL 121.875  
 CLNC DEL (when twr closed)  
 118.85  
 GND CON 121.875  
 REGIONAL DEP CON  
 135.975 379.9

RNAV 1 - DME/DME/IRU or GPS.

RADAR required.

**TOP ALTITUDE:  
ASSIGNED BY ATC**



SC-2, 05 SEP 2024 to 03 OCT 2024

SC-2, 05 SEP 2024 to 03 OCT 2024

(NARRATIVE ON FOLLOWING PAGE)

NOTE: Chart not to scale

# NANDR TWO DEPARTURE (RNAV)

(NANDR2.NANDR) 20APR23

ARLINGTON, TEXAS  
ARLINGTON MUNI (GKY)