

WAAS CH 93827 W34A	APP CRS 342°	Rwy Idg TDZE Apt Elev	6080 620 628
--	------------------------	-----------------------------	---

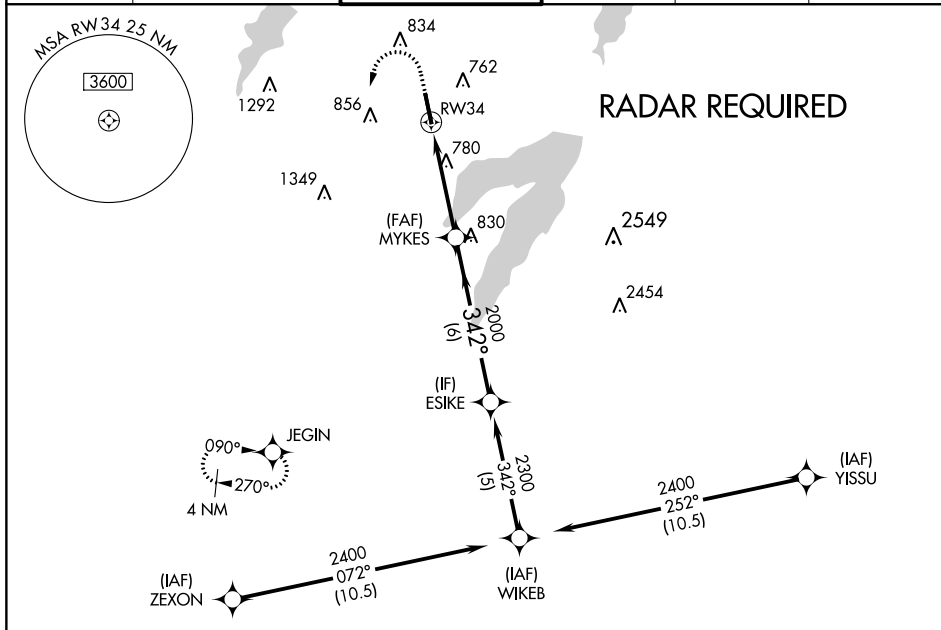
RNAV (GPS) RWY 34

ARLINGTON MUNI (GKY)

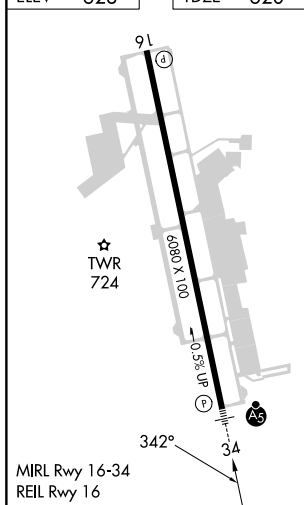
⚠ When local altimeter setting not received, use Grand Prairie Muni altimeter setting. For uncompensated Baro-VNAV systems, LNAV/VNAV NA below -16°C (4°F) or above 54°C (130°F). DME/DME RNP-0.3 NA. Inop table does not apply to LPV. For inop MALSR increase LNAV Cat A, B visibility to 1 mile.

MALSR MISSED APPROACH: Climb to 1100 then climbing left turn to 2800 direct JEGIN and hold.

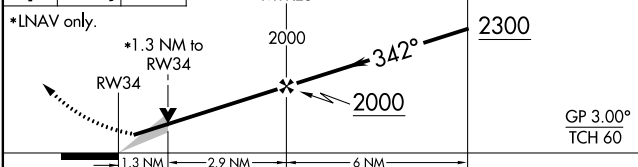
ASOS 127.375	REGIONAL APP CON 135.975 379.9	ARLINGTON TOWER ★ 128.625 (CTAF) 0	GND CON 121.875	CLNC DEL 121.875	CLNC DEL 118.85 <small>(When twr closed)</small>
------------------------	--	--	---------------------------	----------------------------	---



ELEV 628	TDZE 620
----------	----------



1100 2800 JEGIN VGSI and RNAV glidepath not coincident (VGSI Angle 3.00/TCH 55).



CATEGORY	A	B	C	D
LPV DA	820- ³ / ₄	200 (200- ³ / ₄)		NA
LNAV/VNAV DA	1021- ³ / ₄	401 (400- ³ / ₄)		NA
LNAV MDA	1060- ³ / ₄	440 (500- ³ / ₄)		NA
CIRCLING	1100-1 472 (500-1)	1140-1 512 (600-1)	1220-1½ 592 (600-1½)	NA