

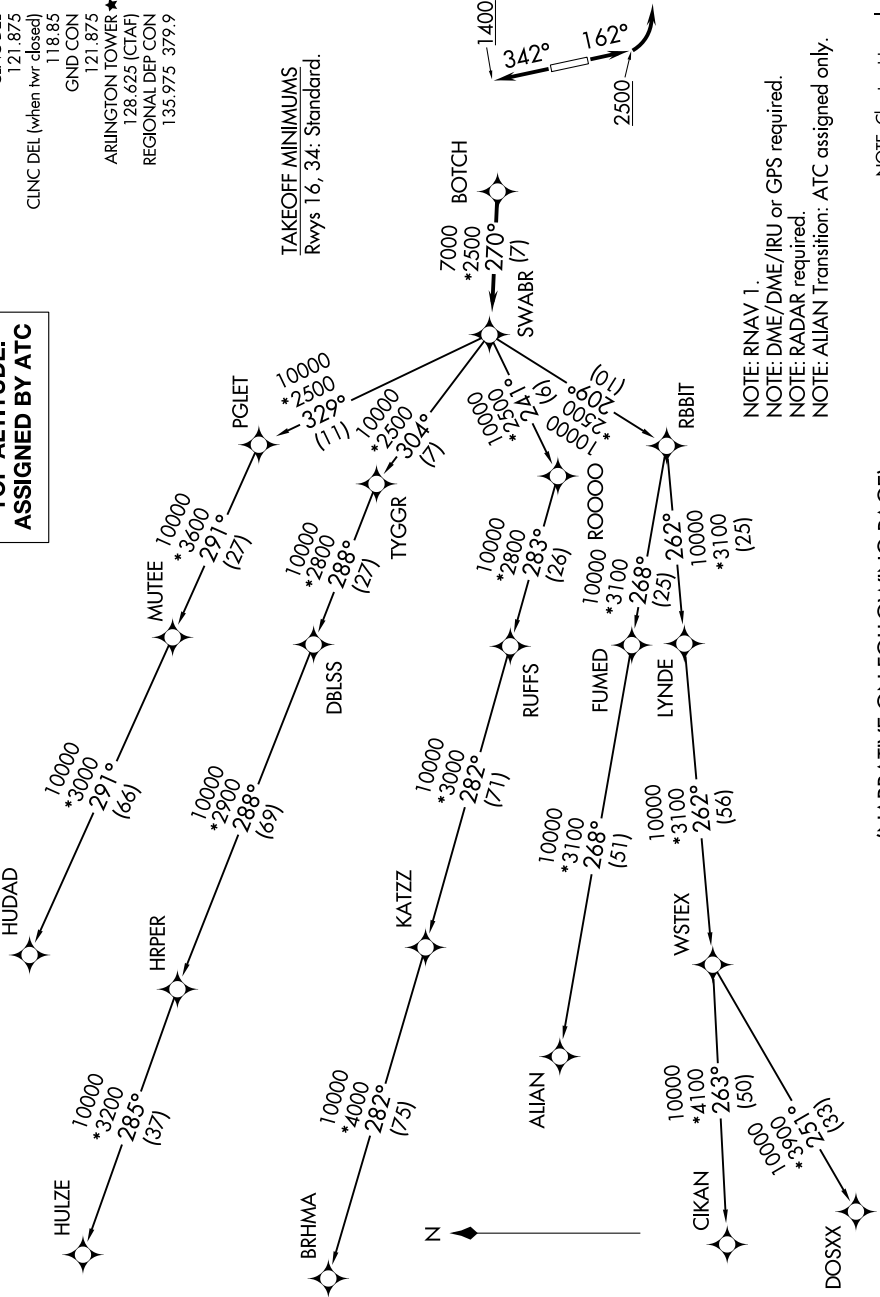
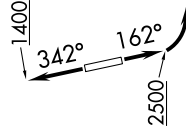
# SWABR ONE DEPARTURE (RNAV)

SC-2, 05 SEP 2024 to 03 OCT 2024

## TOP ALTITUDE: ASSIGNED BY ATC

CINC DEL  
121.875  
CINC DEL (when hvr closed)  
118.85  
GND CON  
121.875  
ARLINGTON TOWER ★  
128.625 (CTAF)  
REGIONAL DEP CON  
135.975 379.9

TAKEOFF MINIMUMS  
Rwys 16, 34: Standard.



NOTE: RNAV 1.  
NOTE: DME/DME/IRU or GPS required.  
NOTE: RADAR required.  
NOTE: ALIAN Transition: ATC assigned only.

NOTE: Chart not to scale.

(NARRATIVE ON FOLLOWING PAGE)

SC-2, 05 SEP 2024 to 03 OCT 2024

# SWABR ONE DEPARTURE (RNAV)