

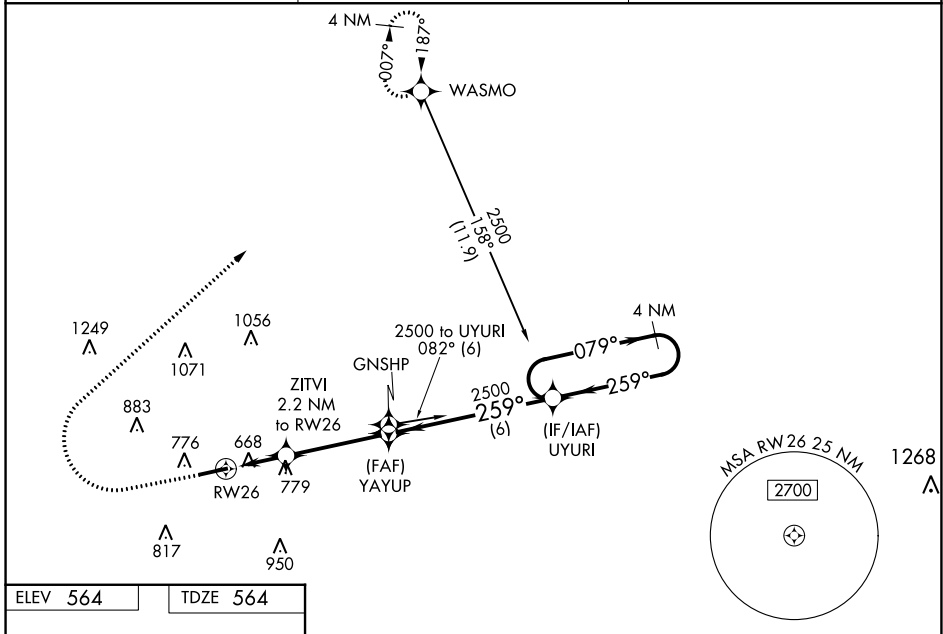
WAAS CH 82221 W26A	APP CRS 259°	Rwy Idg TDZE 564 Apt Elev 564
--	------------------------	---

RNAV (GPS) RWY 26

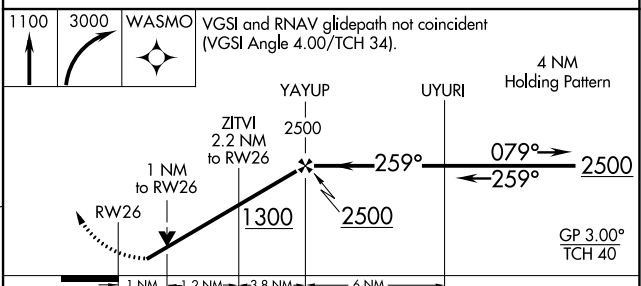
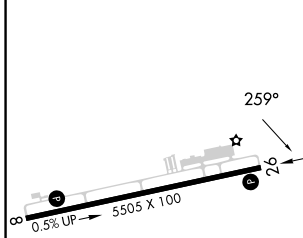
HOPKINSVILLE-CHRISTIAN COUNTY (HVC)

RNP APCH - GPS.	<p>⚠ NA Circling Rwy 8 NA at night. For uncompensated Baro-VNAV systems, LNAV/VNAV NA below -16°C or above 54°C. Baro-VNAV and VDP NA when using Clarksville altimeter setting. Helicopter visibility reduction below 3/4 SM NA. When local altimeter setting not received, use Clarksville altimeter setting and increase LPV DA to 851 feet and all visibilities 1/8 SM; increase LNAV/VNAV DA to 1033 feet and all visibilities 1/8 SM; increase all MDAs 40 feet and Circling visibility Cat C 1/4 SM.</p>	<p>MISSED APPROACH: Climb to 1100 then climbing right turn to 3000 direct WASMO and hold.</p>
-----------------	---	--

AWOS-3 132.575	CAMPBELL APP CON 118.1 269.525	UNICOM 122.8 (CTAF) 0
--------------------------	--	---------------------------------



ELEV 564	TDZE 564
----------	----------



CATEGORY	A	B	C	D
LPV DA		814-7/8	250 (300-7/8)	
LNAV/VNAV DA		996-1 1/4	432 (500-1 1/4)	
LNAV MDA	1040-1	476 (500-1)	1040-1 3/8	476 (500-1 3/8)
C CIRCLING	1140-1	576 (600-1)	1280-2 716 (800-2)	1320-2 1/2 756 (800-2 1/2)

SE-1, 05 SEP 2024 to 03 OCT 2024

SE-1, 05 SEP 2024 to 03 OCT 2024