

APP CRS	Rwy Idg	4000
163°	TDZE	746
	Apt Elev	746

RNAV (GPS) RWY 16

SHERMAN MUNI (SWI)

RNP APCH

Use Sherman/Denison altimeter setting, if not received use Dallas Love Fld altimeter setting and increase all MDA 140 feet and increase LNAV visibility Cat B ¼ SM, Cat C ½ SM, and increase Circling visibility Cats A/B ¼ SM, Cat C ½ SM. Procedure NA at night. Rwy 16 helicopter visibility reduction below 1 SM NA.

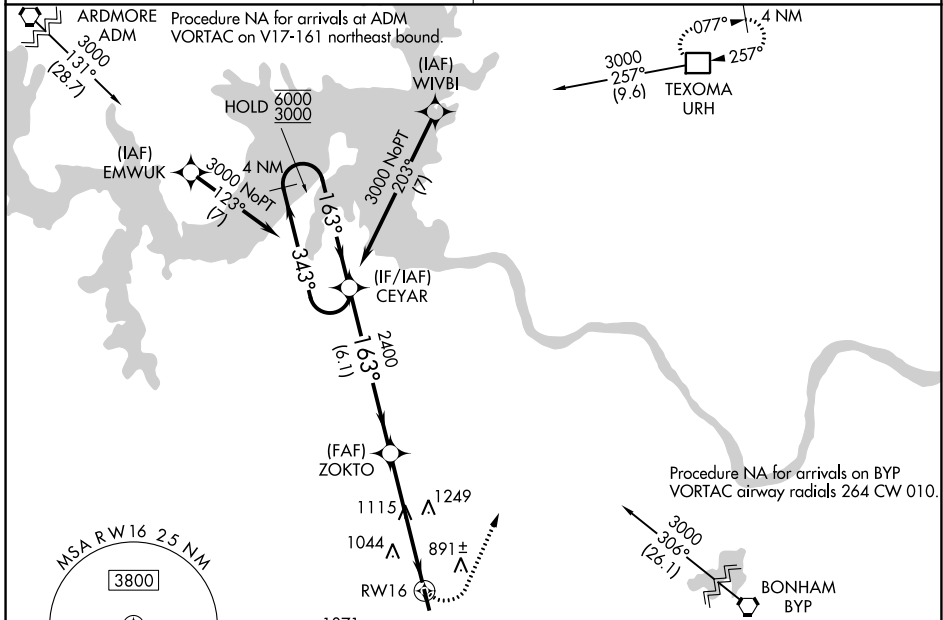
MISSED APPROACH:
Climbing left turn to 3000 direct URH DME and hold.

FORT WORTH CENTER

124.75 323.0

UNICOM

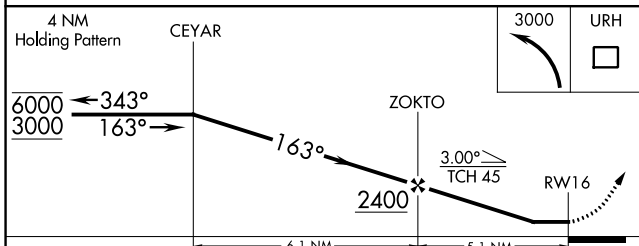
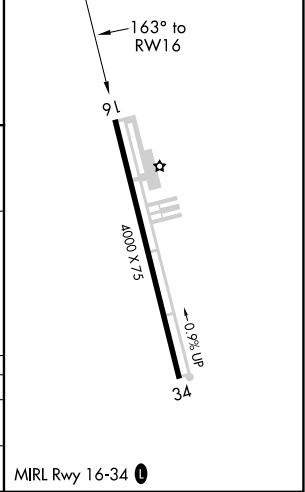
122.8 (CTAF) 0



SC-2, 05 SEP 2024 to 03 OCT 2024

SC-2, 05 SEP 2024 to 03 OCT 2024

ELEV 746	TDZE 746
----------	----------



CATEGORY	A	B	C	D
LNAV MDA	1440-1	694 (700-1)	1440-2 694 (700-2)	NA
CIRCLING	1440-1	694 (700-1)	1620-2½ 874 (900-2½)	NA