

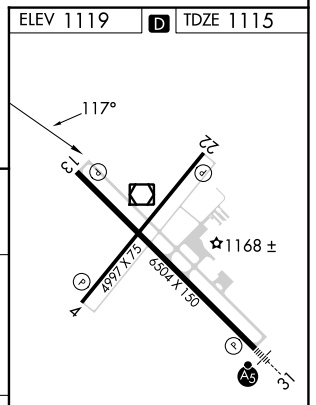
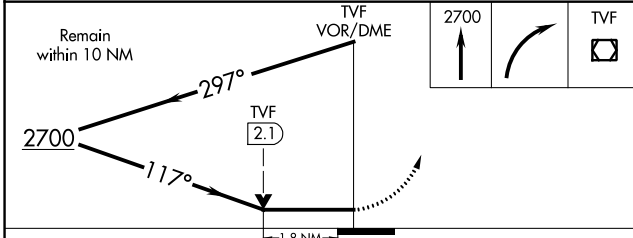
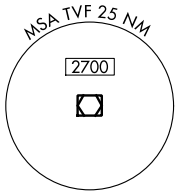
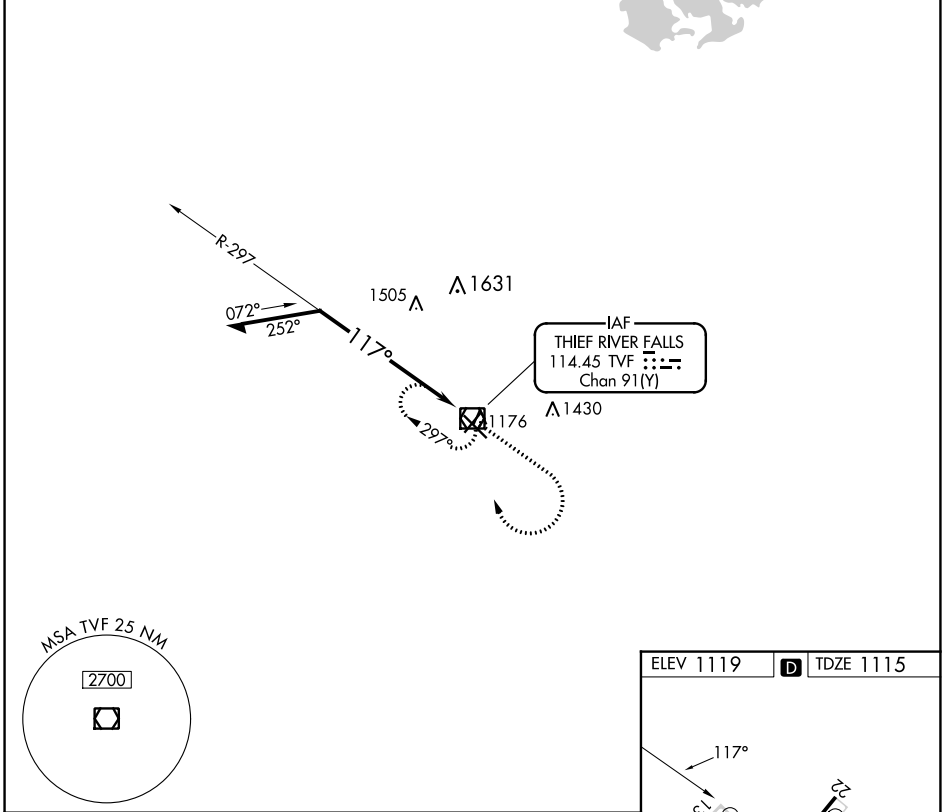
VOR/DME TVF <b>114.45</b> Chan <b>91(Y)</b>	APP CRS <b>117°</b>	Rwy Idg TDZE <b>1115</b> Apt Elev <b>1119</b>	<b>6504</b>
---	------------------------	---	-------------

# VOR Y RWY 13

THIEF RIVER FALLS RGNL (TVF)

**⚠** Circling to Rwy 4/22 NA at night. MISSED APPROACH: Climb to 2700 then right turn direct TVF VOR/DME and hold.

AWOS-3PT <b>119.025</b>	MINNEAPOLIS CENTER <b>132.15 269.6</b>	UNICOM <b>122.8</b> (CTAF) <b>📞</b>
----------------------------	---	--



CATEGORY	A	B	C	D
S-13	1740-1 625 (700-1)		1740-1 <sup>3</sup> / <sub>4</sub> 625 (700-1 <sup>3</sup> / <sub>4</sub> )	1740-2 625 (700-2)
<b>C</b> CIRCLING	1740-1 621 (700-1)		1820-2 701 (800-2)	1980-2 <sup>3</sup> / <sub>4</sub> 861 (900-2 <sup>3</sup> / <sub>4</sub> )

HIRL Rwy 13-31 **📞**  
MIRL Rwy 4-22 **📞**  
REIL Rws 4, 13, and 22 **📞**

NC-1, 05 SEP 2024 to 03 OCT 2024

NC-1, 05 SEP 2024 to 03 OCT 2024