

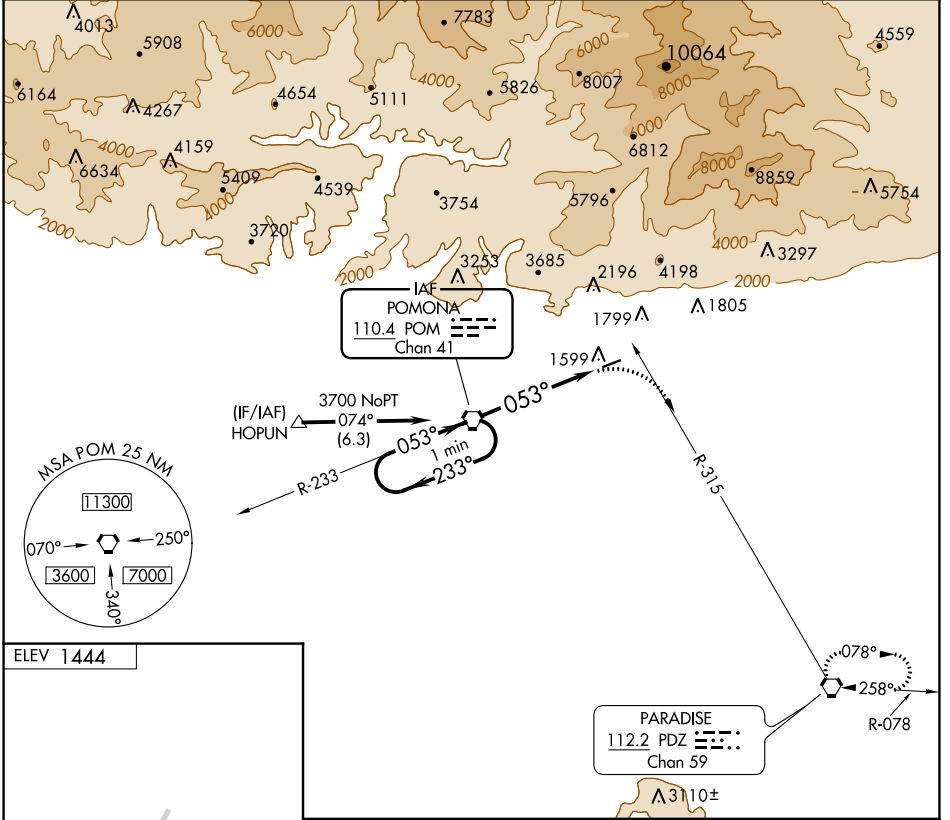
VORTAC POM <b>110.4</b> Chan <b>41</b>	APP CRS <b>053°</b>	Rwy Idg TDZE Apt Elev <b>N/A</b> <b>N/A</b> <b>1444</b>
--	------------------------	--

**VOR-A**  
CABLE (CCB)

**NA** Circling NA northwest of Rwy 6-24. Procedure NA at night.  
When local altimeter setting not received, use Ontario altimeter setting and increase all MDA 100 feet and all visibilities 1/2 SM.  
Rwy 24 helicopter visibility reduction below 1 SM NA.

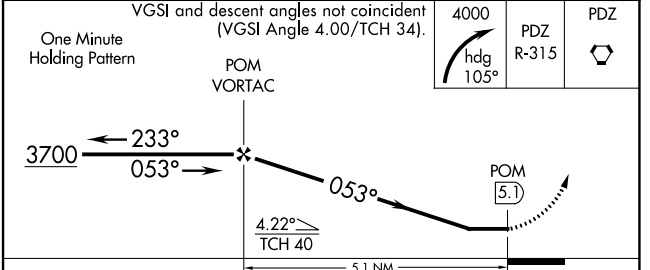
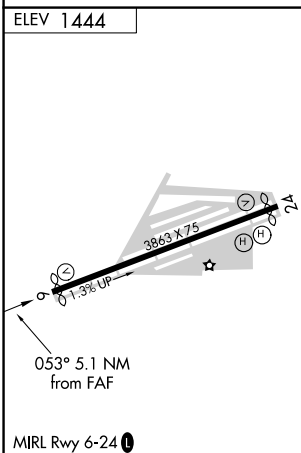
MISSED APPROACH: Climbing right turn to 4000 via heading 105° and PDZ R-315 to PDZ VORTAC and hold.

AWOS-3P <b>119.525</b>	SOCAL APP CON <b>125.5 349.0</b>	UNICOM <b>123.0 (CTAF) 0</b>
---------------------------	-------------------------------------	---------------------------------



SW-3, 05 SEP 2024 to 03 OCT 2024

SW-3, 05 SEP 2024 to 03 OCT 2024



FAF to MAP 5.1 NM					CATEGORY	A	B	C	D	
Knots	60	90	120	150	180	<b>CIRCLING</b>	2240-1	796 (800-1)	2240-2 1/4 796 (800-2 1/4)	NA
Min:Sec	5:06	3:24	2:33	2:02	1:42					