

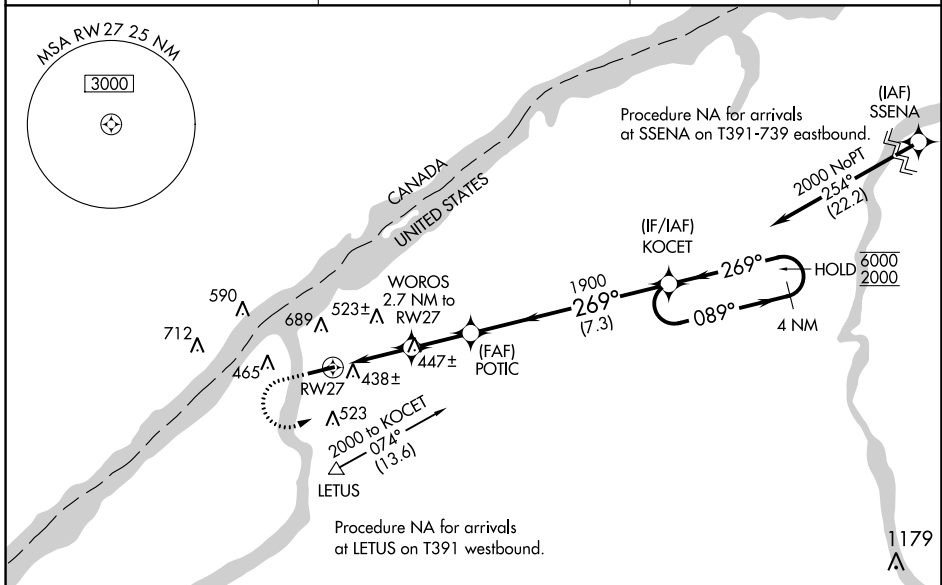
WAAS CH 40041 W27A	APP CRS 269°	Rwy Idg TDZE Apt Elev	6035 302 302
--	------------------------	-----------------------------	---

RNAV (GPS) RWY 27

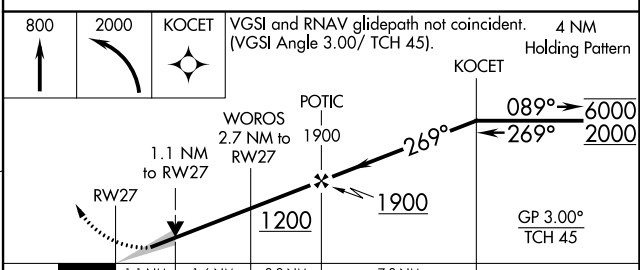
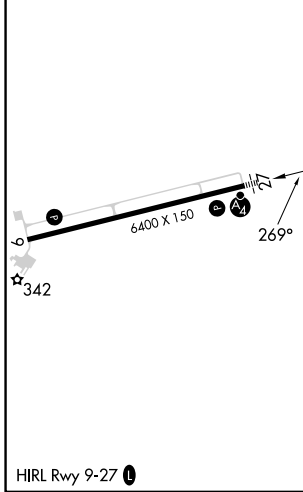
OGDENSBURG INTL (OGS)

RNP APCH - GPS.	MALSF	MISSED APPROACH: Climb to 800 then climbing left turn to 2000 direct KOCET and hold.
<p>For uncompensated Baro-VNAV systems, LNAV/VNAV NA below -15°C or above 54°C.</p>		

AWOS-3 118.525	BOSTON CENTER 135.25 377.1	UNICOM 122.8 (CTAF) 0
--------------------------	--------------------------------------	---------------------------------



ELEV 302	D	TDZE 302
----------	----------	----------



CATEGORY	A	B	C	D
LPV DA		552-3/4	250 (300-3/4)	
LNAV/VNAV DA		717-1 1/8	415 (500-1 1/8)	
LNAV MDA	700-1	398 (400-1)	700-1 1/8	398 (400-1 1/8)
C CIRCLING	760-1 458 (500-1)	1000-1 698 (700-1)	1000-2 698 (700-2)	1000-2 1/4 698 (700-2 1/4)

NE-2, 05 SEP 2024 to 03 OCT 2024

NE-2, 05 SEP 2024 to 03 OCT 2024