

FORT EUSTIS, VIRGINIA

# COPTER RNAV (GPS) RWY 14

APCH CRS	Rwy Idg	3025
139°	TDZE	12
	Arprt Elev	12

[USA]

FELKER AAF (KFAP)

RNP APCH - GPS

When local altimeter setting not received, use Newport News/Williamsburg Intl altimeter setting.  
 VDP NA when using Newport News/Williamsburg Intl altimeter setting.  
 Procedure NA at night.

ODALS

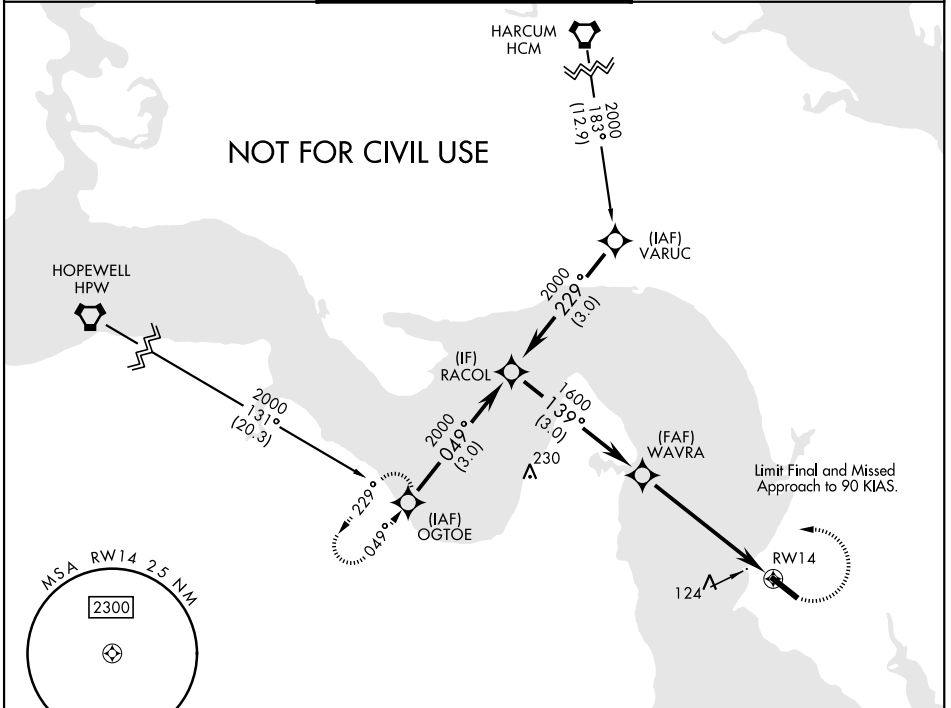


MISSED APPROACH: Climbing left turn to 2000 direct OGTOE and hold.

NORFOLK APP CON  
**125.7 335.625**

FELKER TOWER ★  
**126.3 (CTAF) 0 269.25**

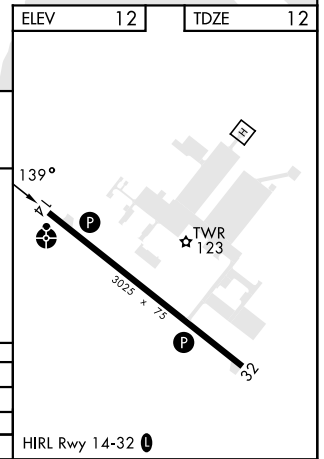
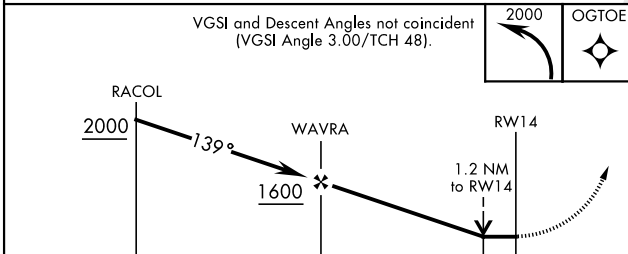
GND CON  
**121.35 229.4**



NE-3, 05 SEP 2024 to 03 OCT 2024

NE-3, 05 SEP 2024 to 03 OCT 2024

ELEV	12	TDZE	12
------	----	------	----



CATEGORY	COPTER		
LNAV MDA	420-¾	409	(500-¾)
NEWPORT NEWS / WILLIAMSBURG INTL ALTIMETER			
LNAV MDA	440-¾	429	(500-¾)

FORT EUSTIS, VIRGINIA

37°08'N-76°37'W

FELKER AAF (KFAP)

Amdt 1 30NOV23

# COPTER RNAV (GPS) RWY 14